

Product datasheet

PE/Cy7® Anti-CD10 antibody [CB-CALLA] ab95544

1 Image

Overview

Product name	PE/Cy7® Anti-CD10 antibody [CB-CALLA]
Description	PE/Cy7® Mouse monoclonal [CB-CALLA] to CD10
Host species	Mouse
Conjugation	PE/Cy7®. Ex: 496nm, Em: 774nm
Tested applications	Suitable for: Flow Cyt
Species reactivity	Reacts with: Human
Immunogen	Full length protein corresponding to Human CD10. Database link: P08473
Positive control	Human peripheral blood cells
General notes	<p>This Cy7 tandem dye is sensitive to photo-induced oxidation. Protect this vial from light during storage, handling and experimental procedures.</p> <p>The Life Science industry has been in the grips of a reproducibility crisis for a number of years. Abcam is leading the way in addressing this with our range of recombinant monoclonal antibodies and knockout edited cell lines for gold-standard validation. Please check that this product meets your needs before purchasing.</p> <p>If you have any questions, special requirements or concerns, please send us an inquiry and/or contact our Support team ahead of purchase. Recommended alternatives for this product can be found below, along with publications, customer reviews and Q&As</p>

Properties

Form	Liquid
Storage instructions	Shipped at 4°C. Store at +4°C.
Storage buffer	pH: 7.2 Preservative: 0.09% Sodium azide
	Constituents: aqueous buffer
Purity	Protein G purified
Clonality	Monoclonal
Clone number	CB-CALLA

Applications

The Abpromise guarantee

Our **Abpromise guarantee** covers the use of ab95544 in the following tested applications.

The application notes include recommended starting dilutions; optimal dilutions/concentrations should be determined by the end user.

Application	Abreviews	Notes
Flow Cyt		Use 5µl for 10 ⁶ cells. ab154458 - Mouse monoclonal IgG2b, is suitable for use as an isotype control with this antibody.

Target

Function

Thermolysin-like specificity, but is almost confined on acting on polypeptides of up to 30 amino acids. Biologically important in the destruction of opioid peptides such as Met- and Leu-enkephalins by cleavage of a Gly-Phe bond. Able to cleave angiotensin-1, angiotensin-2 and angiotensin 1-9. Involved in the degradation of atrial natriuretic factor (ANF). Displays UV-inducible elastase activity toward skin preelastic and elastic fibers.

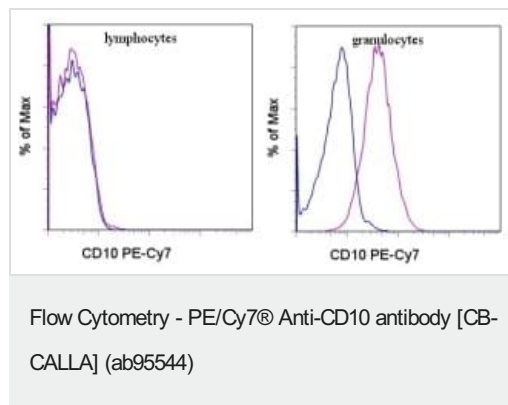
Sequence similarities

Belongs to the peptidase M13 family.

Cellular localization

Cell membrane.

Images



Staining of normal human peripheral blood cells with Mouse IgG2b Isotype Control PE-Cy7 (blue histogram) or Anti-Human CD10 PE-Cy7 (ab95544) (purple histogram).

Please note: All products are "FOR RESEARCH USE ONLY. NOT FOR USE IN DIAGNOSTIC PROCEDURES"

Our Abpromise to you: Quality guaranteed and expert technical support

- Replacement or refund for products not performing as stated on the datasheet
- Valid for 12 months from date of delivery
- Response to your inquiry within 24 hours

- We provide support in Chinese, English, French, German, Japanese and Spanish
- Extensive multi-media technical resources to help you
- We investigate all quality concerns to ensure our products perform to the highest standards

If the product does not perform as described on this datasheet, we will offer a refund or replacement. For full details of the Abpromise, please visit <https://www.abcam.com/abpromise> or contact our technical team.

Terms and conditions

- Guarantee only valid for products bought direct from Abcam or one of our authorized distributors