

Product datasheet

PE/Cy7® Anti-CD23 antibody [2G8] ab59456

[2 References](#) [1 Image](#)

Overview

Product name	PE/Cy7® Anti-CD23 antibody [2G8]
Description	PE/Cy7® Rat monoclonal [2G8] to CD23
Host species	Rat
Conjugation	PE/Cy7®. Ex: 496nm, Em: 774nm
Specificity	This antibody reacts with the CD23 low affinity IgE Fc receptor.
Tested applications	Suitable for: Flow Cyt
Species reactivity	Reacts with: Mouse
Immunogen	Tissue, cells or virus corresponding to CD23. FcεR isolated from B cell lymphoma cell line M12.4.5
General notes	<p>This product or portions thereof is manufactured under license from Carnegie Mellon University under U.S. Patent Number 5, 268, 486 and related patents. Cy® and CyDye® are trademarks of Cytiva.</p> <p>The Life Science industry has been in the grips of a reproducibility crisis for a number of years. Abcam is leading the way in addressing this with our range of recombinant monoclonal antibodies and knockout edited cell lines for gold-standard validation. Please check that this product meets your needs before purchasing.</p> <p>If you have any questions, special requirements or concerns, please send us an inquiry and/or contact our Support team ahead of purchase. Recommended alternatives for this product can be found below, along with publications, customer reviews and Q&As</p>

Properties

Form	Liquid
Storage instructions	Shipped at 4°C. Store at +4°C. Store In the Dark.
Storage buffer	<p>pH: 7.1</p> <p>Preservative: 0.09% Sodium azide</p> <p>Constituents: PBS, 16% Sucrose</p> <p>Also contains stabilising agent.</p>
Purity	Affinity purified

Clonality	Monoclonal
Clone number	2G8
Isotype	IgG2a
Light chain type	kappa

Applications

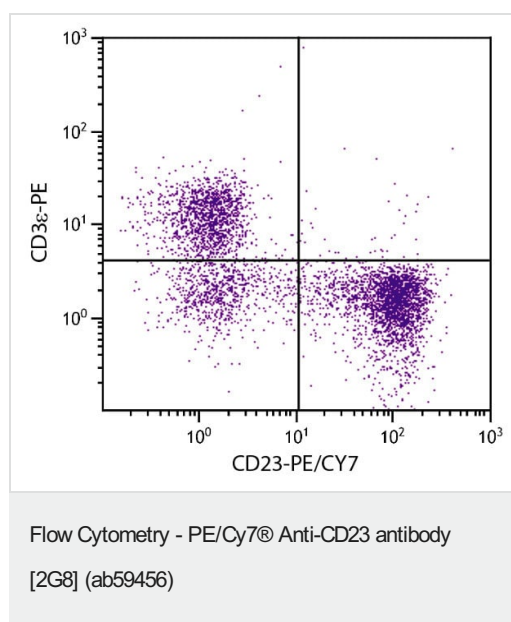
The Abpromise guarantee Our **Abpromise guarantee** covers the use of ab59456 in the following tested applications. The application notes include recommended starting dilutions; optimal dilutions/concentrations should be determined by the end user.

Application	Abreviews	Notes
Flow Cyt		Use at an assay dependent concentration. ab154460 - Rat monoclonal IgG2a, is suitable for use as an isotype control with this antibody.

Target

Function	This receptor has essential roles in the regulation of IgE production and in the differentiation of B-cells (it is a B-cell-specific antigen).
Sequence similarities	Contains 1 C-type lectin domain.
Post-translational modifications	N- and O-glycosylated.
Cellular localization	Cell membrane. Secreted. Also exists as a soluble excreted form.

Images



Flow cytometry analysis of BALB/c mouse splenocytes labeling CD23 with ab59456 at 0.1 µg/10⁶ cells and CD3 epsilon with Rat Anti-Mouse CD3 epsilon-PE.

Please note: All products are "FOR RESEARCH USE ONLY. NOT FOR USE IN DIAGNOSTIC PROCEDURES"

Our Abpromise to you: Quality guaranteed and expert technical support

- Replacement or refund for products not performing as stated on the datasheet
- Valid for 12 months from date of delivery
- Response to your inquiry within 24 hours

- We provide support in Chinese, English, French, German, Japanese and Spanish
- Extensive multi-media technical resources to help you
- We investigate all quality concerns to ensure our products perform to the highest standards

If the product does not perform as described on this datasheet, we will offer a refund or replacement. For full details of the Abpromise, please visit <https://www.abcam.com/abpromise> or contact our technical team.

Terms and conditions

- Guarantee only valid for products bought direct from Abcam or one of our authorized distributors