

Product datasheet

PE/Cy7® Anti-Ly-6A/E (Sca-1) antibody [D7] ab93537

[1 Image](#)

Overview

Product name	PE/Cy7® Anti-Ly-6A/E (Sca-1) antibody [D7]
Description	PE/Cy7® Rat monoclonal [D7] to Ly-6A/E (Sca-1)
Host species	Rat
Conjugation	PE/Cy7®. Ex: 496nm, Em: 774nm
Specificity	ab93537 reacts with both Ly6E.1 and Ly6A.2 molecules expressed by mouse hematopoietic stem cells, myeloid population and peripheral T and B cells.
Tested applications	Suitable for: Flow Cyt
Species reactivity	Reacts with: Mouse
Immunogen	Tissue, cells or virus corresponding to Mouse Sca1/ Ly6A/E. IL2 dependent T cell line CTL-L (Mouse).
Positive control	C57Bl/6 splenocytes.
General notes	<p>This Cy7 tandem dye is sensitive to photo-induced oxidation. Protect this reagent from light during storage, handling & experimental procedures.</p> <p>The Life Science industry has been in the grips of a reproducibility crisis for a number of years. Abcam is leading the way in addressing this with our range of recombinant monoclonal antibodies and knockout edited cell lines for gold-standard validation. Please check that this product meets your needs before purchasing.</p> <p>If you have any questions, special requirements or concerns, please send us an inquiry and/or contact our Support team ahead of purchase. Recommended alternatives for this product can be found below, along with publications, customer reviews and Q&As</p>

Properties

Form	Liquid
Storage instructions	Shipped at 4°C. Store at +4°C.
Storage buffer	<p>pH: 7.20</p> <p>Preservative: 0.09% Sodium azide</p> <p>Constituent: PBS</p> <p>Protein stabiliser</p>
Purity	Protein G purified

Clonality	Monoclonal
Clone number	D7
Isotype	IgG2a
Light chain type	kappa

Applications

The Abpromise guarantee Our **Abpromise guarantee** covers the use of ab93537 in the following tested applications. The application notes include recommended starting dilutions; optimal dilutions/concentrations should be determined by the end user.

Application	Abreviews	Notes
Flow Cyt		

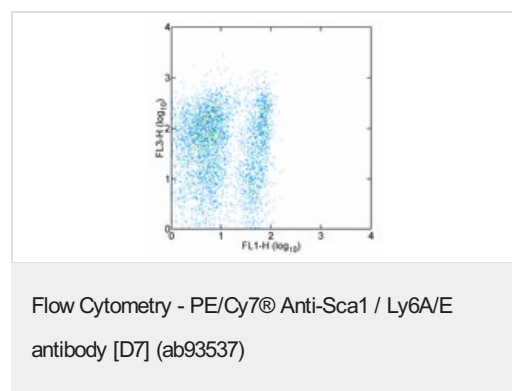
Application notes Flow Cyt: Use at a concentration of 0.06 µg/test. A test is defined as the amount (µg) of antibody that will stain a cell sample in a final volume of 100 µL. Cell number should be determined empirically but can range from 10⁵ to 10⁸ cells/test.

Not yet tested in other applications.
Optimal dilutions/concentrations should be determined by the end user.

Target

Function	T-cell activation.
Tissue specificity	Widely expressed.
Sequence similarities	Contains 1 UPAR/Ly6 domain.
Post-translational modifications	O-glycosylated. Not N-glycosylated. Not phosphorylated.
Cellular localization	Cell membrane.

Images



ab93537 at 0.06µg dilution staining Ly6A/E (Sca1) in C57Bl/6 splenocytes by Flow Cytometry. Cells in the lymphocyte gate were used for analysis.

Please note: All products are "FOR RESEARCH USE ONLY. NOT FOR USE IN DIAGNOSTIC PROCEDURES"

Our Abpromise to you: Quality guaranteed and expert technical support

- Replacement or refund for products not performing as stated on the datasheet
- Valid for 12 months from date of delivery
- Response to your inquiry within 24 hours

- We provide support in Chinese, English, French, German, Japanese and Spanish
- Extensive multi-media technical resources to help you
- We investigate all quality concerns to ensure our products perform to the highest standards

If the product does not perform as described on this datasheet, we will offer a refund or replacement. For full details of the Abpromise, please visit <https://www.abcam.com/abpromise> or contact our technical team.

Terms and conditions

- Guarantee only valid for products bought direct from Abcam or one of our authorized distributors