

Product datasheet

PE/Cy7® Anti-Ly6g antibody [RB6-8C5] ab25514

[13 References](#) [1 Image](#)

Overview

Product name	PE/Cy7® Anti-Ly6g antibody [RB6-8C5]
Description	PE/Cy7® Rat monoclonal [RB6-8C5] to Ly6g
Host species	Rat
Conjugation	PE/Cy7®. Ex: 496nm, Em: 774nm
Tested applications	Suitable for: Flow Cyt
Species reactivity	Reacts with: Mouse
Immunogen	Tissue, cells or virus corresponding to Ly6g. Mouse granulocytes
Positive control	Flow Cyt: C57Bl/6 bone marrow cells.
General notes	<p>This product or portions thereof is manufactured under license from Carnegie Mellon University under U.S. Patent Number 5, 268, 486 and related patents. Cy® and CyDye® are trademarks of Cytiva.</p> <p>The Life Science industry has been in the grips of a reproducibility crisis for a number of years. Abcam is leading the way in addressing this with our range of recombinant monoclonal antibodies and knockout edited cell lines for gold-standard validation. Please check that this product meets your needs before purchasing.</p> <p>If you have any questions, special requirements or concerns, please send us an inquiry and/or contact our Support team ahead of purchase. Recommended alternatives for this product can be found below, along with publications, customer reviews and Q&As</p>

Properties

Form	Liquid
Storage instructions	Shipped at 4°C. Store at +4°C. Avoid freeze / thaw cycle. Store In the Dark.
Storage buffer	pH: 7.20 Preservative: 0.09% Sodium azide Constituents: 0.1% Gelatin, 0.88% Sodium chloride, 0.12% Monobasic dihydrogen sodium phosphate
Purity	Affinity purified
Purification notes	Purified from TCS
Clonality	Monoclonal

Clone number	RB6-8C5
Isotype	IgG2b
Light chain type	kappa

Applications

The Abpromise guarantee Our **Abpromise guarantee** covers the use of ab25514 in the following tested applications. The application notes include recommended starting dilutions; optimal dilutions/concentrations should be determined by the end user.

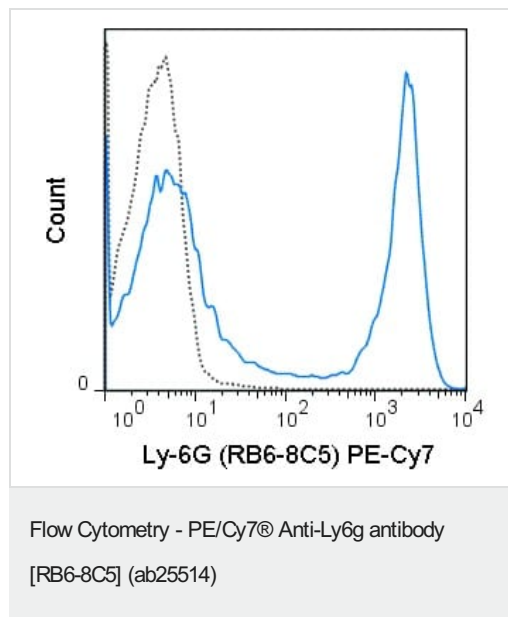
Application	Abreviews	Notes
Flow Cyt		Use at an assay dependent concentration. ab154461 - Rat monoclonal IgG2b, is suitable for use as an isotype control with this antibody.

Target

Relevance Ly6G is a GPI-anchored protein, that is also known as the myeloid differentiation antigen Gr1. The antigen is transiently expressed on monocytes in the bone marrow. The level of antigen expression in the bone marrow directly correlates with granulocyte differentiation and maturation. Ly6G is expressed predominantly on neutrophils, also in a subset of eosinophils, differentiating pre-monocytes, and plasmacytoid dendritic cells.

Cellular localization Attached to the membrane by a GPI-anchor.

Images



C57Bl/6 bone marrow cells stained with 0.25µg ab25514 (solid line) or 0.25µg PE-Cy7-conjugated rat IgG2b isotype control (dashed line).

Please note: All products are "FOR RESEARCH USE ONLY. NOT FOR USE IN DIAGNOSTIC PROCEDURES"

Our Abpromise to you: Quality guaranteed and expert technical support

- Replacement or refund for products not performing as stated on the datasheet
- Valid for 12 months from date of delivery
- Response to your inquiry within 24 hours

- We provide support in Chinese, English, French, German, Japanese and Spanish
- Extensive multi-media technical resources to help you
- We investigate all quality concerns to ensure our products perform to the highest standards

If the product does not perform as described on this datasheet, we will offer a refund or replacement. For full details of the Abpromise, please visit <https://www.abcam.com/abpromise> or contact our technical team.

Terms and conditions

- Guarantee only valid for products bought direct from Abcam or one of our authorized distributors