


Product datasheet

Anti-PELP1 antibody [EPR15212] ab187653

Recombinant RabMAb

5 Images

Overview

Product name	Anti-PELP1 antibody [EPR15212]
Description	Rabbit monoclonal [EPR15212] to PELP1
Host species	Rabbit
Tested applications	Suitable for: IHC-P, WB
Species reactivity	Reacts with: Rat, Human Predicted to work with: Mouse 
Immunogen	Synthetic peptide. This information is proprietary to Abcam and/or its suppliers.
Positive control	MDA-MB-435, MCF-7 and 293T cell lysates. Human breast carcinoma and Rat brain tissue.
General notes	This product is a recombinant monoclonal antibody, which offers several advantages including: <ul style="list-style-type: none"> - High batch-to-batch consistency and reproducibility - Improved sensitivity and specificity - Long-term security of supply - Animal-free production For more information see here . Our RabMAb [®] technology is a patented hybridoma-based technology for making rabbit monoclonal antibodies. For details on our patents, please refer to RabMAb[®] patents .

Properties

Form	Liquid
Storage instructions	Shipped at 4°C. Store at +4°C short term (1-2 weeks). Upon delivery aliquot. Store at -20°C long term. Avoid freeze / thaw cycle.
Storage buffer	pH: 7.2 Preservative: 0.01% Sodium azide Constituents: 59% PBS, 40% Glycerol (glycerin, glycerine), 0.05% BSA
Purity	Protein A purified
Clonality	Monoclonal
Clone number	EPR15212
Isotype	IgG

Applications

The Abpromise guarantee

Our **Abpromise guarantee** covers the use of ab187653 in the following tested applications.

The application notes include recommended starting dilutions; optimal dilutions/concentrations should be determined by the end user.

Application	Abreviews	Notes
IHC-P		1/50 - 1/100. Perform heat mediated antigen retrieval with citrate buffer pH 6 before commencing with IHC staining protocol.
WB		1/1000 - 1/10000. Predicted molecular weight: 120 kDa.

Target

Function

Coactivator of estrogen receptor-mediated transcription and a corepressor of other nuclear hormone receptors and sequence-specific transcription factors. Plays a role in estrogen receptor (ER) genomic activity when present in the nuclear compartment by activating the ER target genes in a hormonal stimulation dependent manner. Can facilitate ER non-genomic signaling via SRC and PI3K interaction in the cytosol. Plays a role in E2-mediated cell cycle progression by interacting with RB1. May have important functional implications in ER/growth factor cross-talk. Interacts with several growth factor signaling components including EGFR and HRS. Involved in nuclear receptor signaling via its interaction with AR and NR3C1. May promote tumorigenesis via its interaction with and modulation of several oncogenes including SRC, PI3K, STAT3 and EGFR. Plays a role in cancer cell metastasis via its ability to modulate E2-mediated cytoskeleton changes and cell migration via its interaction with SRC and PI3K.

Tissue specificity

Isoform 2 is expressed in breast cancer cell lines. Isoform 1 is widely expressed.

Domain

The Glu-rich region mediates histones interaction.

The Leu-Xaa-Xaa-Leu-Leu (LXXLL) motifs are required for the association with nuclear receptor ESR1.

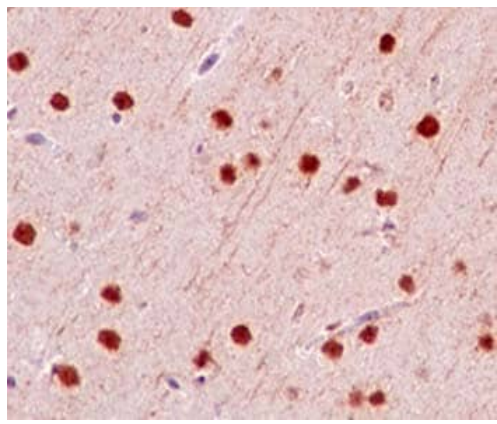
Post-translational modifications

Phosphorylated upon DNA damage, probably by ATM or ATR.

Cellular localization

Nucleus. Cytoplasm. Also found associated with the plasma membrane. Mainly in cytoplasm in a subset of breast tumors. Localization is widely deregulated in endometrial cancers with predominantly cytoplasm localization in high-grade endometrial tumors.

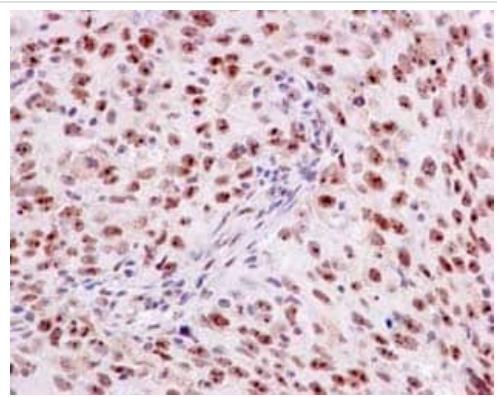
Images



Immunohistochemistry (Formalin/PFA-fixed paraffin-embedded sections) - Anti-PELP1 antibody [EPR15212] (ab187653)

Immunohistochemical analysis of formalin fixed and paraffin embedded rat brain tissue labeling PELP1 with ab187653 at 1/100 dilution, counterstained with Hematoxylin.

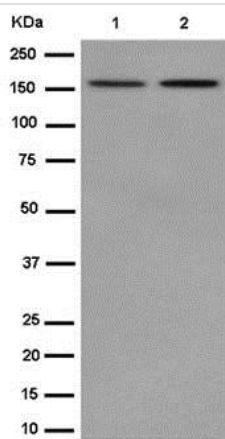
Perform heat mediated antigen retrieval with citrate buffer pH 6 before commencing with IHC staining protocol.



Immunohistochemistry (Formalin/PFA-fixed paraffin-embedded sections) - Anti-PELP1 antibody [EPR15212] (ab187653)

Immunohistochemical analysis of formalin fixed and paraffin embedded Human breast carcinoma tissue labeling PELP1 with ab187653 at 1/100 dilution, counterstained with Hematoxylin.

Perform heat mediated antigen retrieval with citrate buffer pH 6 before commencing with IHC staining protocol.



Western blot - Anti-PELP1 antibody [EPR15212]
(ab187653)

All lanes : Anti-PELP1 antibody [EPR15212] (ab187653) at 1/5000 dilution

Lane 1 : MCF-7 cell lysate

Lane 2 : 293T cell lysate

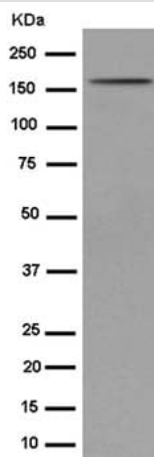
Lysates/proteins at 10 µg per lane.

Secondary

All lanes : Goat Anti-Rabbit IgG, (H+L), Peroxidase conjugated at 1/1000 dilution

Developed using the ECL technique.

Predicted band size: 120 kDa



Western blot - Anti-PELP1 antibody [EPR15212]
(ab187653)

Anti-PELP1 antibody [EPR15212] (ab187653) at 1/2000 dilution + MDA-MB-435 cell lysate at 10 µg

Secondary

Goat Anti-Rabbit IgG, (H+L), Peroxidase conjugated at 1/1000 dilution

Developed using the ECL technique.

Predicted band size: 120 kDa

Why choose a recombinant antibody?



Research with confidence
Consistent and reproducible results



Long-term and scalable supply
Recombinant technology



Success from the first experiment
Confirmed specificity



Ethical standards compliant
Animal-free production

Anti-PELP1 antibody [EPR15212] (ab187653)

Please note: All products are "FOR RESEARCH USE ONLY. NOT FOR USE IN DIAGNOSTIC PROCEDURES"

Our Abpromise to you: Quality guaranteed and expert technical support

- Replacement or refund for products not performing as stated on the datasheet
- Valid for 12 months from date of delivery
- Response to your inquiry within 24 hours
- We provide support in Chinese, English, French, German, Japanese and Spanish
- Extensive multi-media technical resources to help you
- We investigate all quality concerns to ensure our products perform to the highest standards

If the product does not perform as described on this datasheet, we will offer a refund or replacement. For full details of the Abpromise, please visit <https://www.abcam.com/abpromise> or contact our technical team.

Terms and conditions

- Guarantee only valid for products bought direct from Abcam or one of our authorized distributors