

Product datasheet

Anti-PEP1 antibody [18C8BC7AD10] ab113690

[2 References](#) [1 Image](#)

Overview

Product name	Anti-PEP1 antibody [18C8BC7AD10]
Description	Mouse monoclonal [18C8BC7AD10] to PEP1
Host species	Mouse
Tested applications	Suitable for: WB
Species reactivity	Reacts with: Saccharomyces cerevisiae
Immunogen	Recombinant full length protein. This information is considered to be commercially sensitive.
Positive control	Yeast lysate
General notes	<p>This antibody clone is manufactured by Abcam. If you require a custom buffer formulation or conjugation for your experiments, please contact orders@abcam.com.</p> <p>The Life Science industry has been in the grips of a reproducibility crisis for a number of years. Abcam is leading the way in addressing this with our range of recombinant monoclonal antibodies and knockout edited cell lines for gold-standard validation. Please check that this product meets your needs before purchasing.</p> <p>If you have any questions, special requirements or concerns, please send us an inquiry and/or contact our Support team ahead of purchase. Recommended alternatives for this product can be found below, along with publications, customer reviews and Q&As</p> <p>Product was previously marketed under the MitoSciences sub-brand.</p>

Properties

Form	Liquid
Storage instructions	Shipped at 4°C. Store at +4°C.
Storage buffer	<p>pH: 7.5</p> <p>Preservative: 0.02% Sodium azide</p> <p>Constituent: HEPES buffered saline</p>
Purity	Proprietary Purification
Purification notes	Near homogeneity (Purity >95% by SDS-PAGE). The antibody was produced in vitro using hybridomas grown in serum-free medium, and then purified by chemical fractionation.
Clonality	Monoclonal

Clone number	18C8BC7AD10
Isotype	IgG2c
Light chain type	kappa

Applications

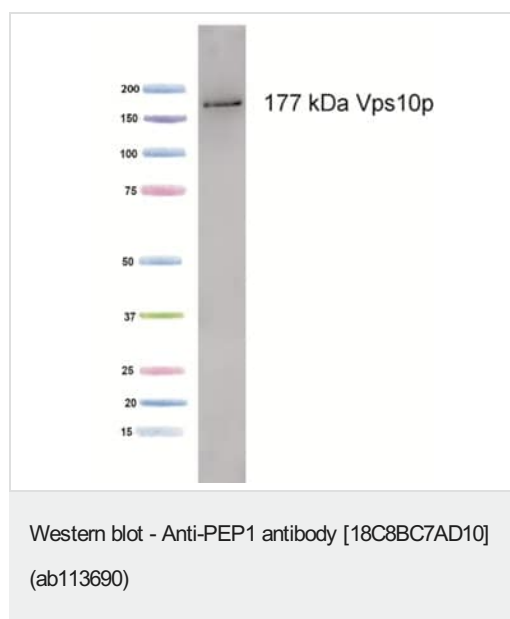
The Abpromise guarantee Our **Abpromise guarantee** covers the use of ab113690 in the following tested applications. The application notes include recommended starting dilutions; optimal dilutions/concentrations should be determined by the end user.

Application	Abreviews	Notes
WB		Use a concentration of 4 µg/ml. Detects a band of approximately 177 kDa (predicted molecular weight: 177 kDa).

Target

Function	Functions as a sorting receptor in the Golgi compartment required for the intracellular sorting and delivery of soluble vacuolar proteins, like carboxypeptidase Y (CPY) and proteinase A. May execute multiple rounds of sorting by cycling between the late Golgi and a prevacuolar endosome-like compartment. Binds the Golgi-modified P2 form of CPY, and this interaction is dependent on the presence of an intact CPY vacuolar protein sorting signal.
Sequence similarities	Belongs to the VPS10-related sortilin family. Contains 10 BNR repeats.
Domain	The luminal domain contains two regions of approximately 650 AA that exhibit 20% identity. The cytoplasmic domain serves as a Golgi retention/recycling signal.
Cellular localization	Golgi apparatus > trans-Golgi network membrane. Prevacuolar compartment membrane. Cycles between the Golgi apparatus and the prevacuolar compartments.

Images



Anti-PEP1 antibody [18C8BC7AD10] (ab113690) + Yeast whole cell lysate at 15 µg

Developed using the ECL technique.

Performed under reducing conditions.

Predicted band size: 177 kDa

Please note: All products are "FOR RESEARCH USE ONLY. NOT FOR USE IN DIAGNOSTIC PROCEDURES"

Our Abpromise to you: Quality guaranteed and expert technical support

- Replacement or refund for products not performing as stated on the datasheet
- Valid for 12 months from date of delivery
- Response to your inquiry within 24 hours
- We provide support in Chinese, English, French, German, Japanese and Spanish
- Extensive multi-media technical resources to help you
- We investigate all quality concerns to ensure our products perform to the highest standards

If the product does not perform as described on this datasheet, we will offer a refund or replacement. For full details of the Abpromise, please visit <https://www.abcam.com/abpromise> or contact our technical team.

Terms and conditions

- Guarantee only valid for products bought direct from Abcam or one of our authorized distributors