

Product datasheet

Anti-Pepsinogen I antibody [7G3] ab50123

★★★★☆ [3 Abreviews](#) [2 References](#) [1 Image](#)

Overview

Product name	Anti-Pepsinogen I antibody [7G3]
Description	Mouse monoclonal [7G3] to Pepsinogen I
Host species	Mouse
Tested applications	Suitable for: IHC-P
Species reactivity	Reacts with: Human
Immunogen	Full length native protein (purified)
General notes	<p>This product was changed from ascites to tissue culture supernatant on 11th September, 2017. Lot numbers including and higher than GR3182440-1, GR3182440-2, and GR3182440-3 will be from tissue culture supernatant. Please note that the dilutions may need to be adjusted accordingly.</p> <p>The Life Science industry has been in the grips of a reproducibility crisis for a number of years. Abcam is leading the way in addressing this with our range of recombinant monoclonal antibodies and knockout edited cell lines for gold-standard validation. Please check that this product meets your needs before purchasing.</p> <p>If you have any questions, special requirements or concerns, please send us an inquiry and/or contact our Support team ahead of purchase. Recommended alternatives for this product can be found below, along with publications, customer reviews and Q&As</p>

Properties

Form	Liquid
Storage instructions	Shipped at 4°C. Upon delivery aliquot and store at -20°C or -80°C. Avoid repeated freeze / thaw cycles.
Storage buffer	pH: 7.20 Preservative: 0.09% Sodium azide Constituents: 0.04% PBS, 0.87% Sodium chloride
Purity	Protein A purified
Clonality	Monoclonal
Clone number	7G3
Isotype	IgG1

Applications

The Abpromise guarantee

Our **Abpromise guarantee** covers the use of ab50123 in the following tested applications.

The application notes include recommended starting dilutions; optimal dilutions/concentrations should be determined by the end user.

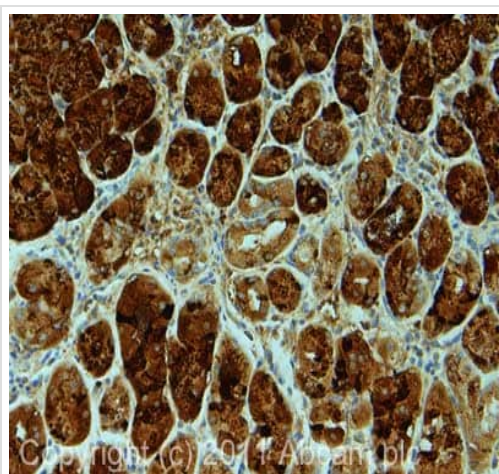
Application	Abreviews	Notes
IHC-P	★★★★★ (2)	Use a concentration of 1 µg/ml. Perform heat mediated antigen retrieval with citrate buffer pH 6 before commencing with IHC staining protocol.

Target

Relevance

Pepsinogen I is proenzyme that is cleaved to form pepsin both in an autocatalytic fashion and by pepsin itself.

Images



Immunohistochemistry (Formalin/PFA-fixed paraffin-embedded sections) - Anti-Pepsinogen I antibody [7G3] (ab50123)

IHC image of ab50123 staining in human normal stomach formalin fixed paraffin embedded tissue section, performed on a Leica Bond™ system using the standard protocol F. The section was pre-treated using heat mediated antigen retrieval with sodium citrate buffer (pH6, epitope retrieval solution 1) for 20 mins. The section was then incubated with ab50123, 1µg/ml, for 15 mins at room temperature and detected using an HRP conjugated compact polymer system. DAB was used as the chromogen. The section was then counterstained with haematoxylin and mounted with DPX.

For other IHC staining systems (automated and non-automated) customers should optimize variable parameters such as antigen retrieval conditions, primary antibody concentration and antibody incubation times.

Please note: All products are "FOR RESEARCH USE ONLY. NOT FOR USE IN DIAGNOSTIC PROCEDURES"

Our Abpromise to you: Quality guaranteed and expert technical support

- Replacement or refund for products not performing as stated on the datasheet
- Valid for 12 months from date of delivery
- Response to your inquiry within 24 hours
- We provide support in Chinese, English, French, German, Japanese and Spanish
- Extensive multi-media technical resources to help you

- We investigate all quality concerns to ensure our products perform to the highest standards

If the product does not perform as described on this datasheet, we will offer a refund or replacement. For full details of the Abpromise, please visit <https://www.abcam.com/abpromise> or contact our technical team.

Terms and conditions

- Guarantee only valid for products bought direct from Abcam or one of our authorized distributors