


Anti-Peptide YY/PYY antibody ab131246

★★★★★ [5 Abreviews](#) [3 References](#) [4 Images](#)

Overview

| | |
|----------------------------|---|
| Product name | Anti-Peptide YY/PYY antibody |
| Description | Rabbit polyclonal to Peptide YY/PYY |
| Host species | Rabbit |
| Tested applications | Suitable for: IHC-P |
| Species reactivity | Reacts with: Rat, Human, Common marmoset Predicted to work with: Mouse, Dog, Pig, Macaque monkey, Chinese hamster  |
| Immunogen | Synthetic peptide corresponding to Rat Peptide YY/PYY aa 1 to the C-terminus conjugated to keyhole limpet haemocyanin. Database link: P10631 (Peptide available as ab156889) |
| Positive control | This antibody gave a positive signal in Rat normal Pancreas formalin fixed paraffin embedded tissue section. |
| General notes | <p>The Life Science industry has been in the grips of a reproducibility crisis for a number of years. Abcam is leading the way in addressing this with our range of recombinant monoclonal antibodies and knockout edited cell lines for gold-standard validation. Please check that this product meets your needs before purchasing.</p> <p>If you have any questions, special requirements or concerns, please send us an inquiry and/or contact our Support team ahead of purchase. Recommended alternatives for this product can be found below, along with publications, customer reviews and Q&As</p> |

Properties

| | |
|-----------------------------|--|
| Form | Liquid |
| Storage instructions | Shipped at 4°C. Store at +4°C short term (1-2 weeks). Upon delivery aliquot. Store at -20°C or -80°C. Avoid freeze / thaw cycle. |
| Storage buffer | pH: 7.40 Preservative: 0.02% Sodium azide Constituent: PBS Batches of this product that have a concentration < 1mg/ml may have BSA added as a stabilising agent. If you would like information about the formulation of a specific lot, please contact our scientific support team who will be happy to help. |

| | |
|------------------|-----------------------------|
| Purity | Immunogen affinity purified |
| Clonality | Polyclonal |
| Isotype | IgG |

Applications

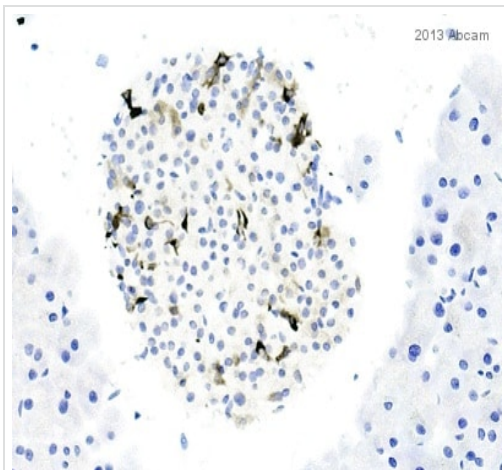
The Abpromise guarantee Our **Abpromise guarantee** covers the use of ab131246 in the following tested applications. The application notes include recommended starting dilutions; optimal dilutions/concentrations should be determined by the end user.

| Application | Abreviews | Notes |
|-------------|-----------|--|
| IHC-P | ★★★★★ (5) | Use a concentration of 1 µg/ml. Perform heat mediated antigen retrieval with citrate buffer pH 6 before commencing with IHC staining protocol. |

Target

| | |
|------------------------------|---|
| Function | This gut peptide inhibits exocrine pancreatic secretion, has a vasoconstrictory action and inhibits jejunal and colonic mobility. |
| Sequence similarities | Belongs to the NPY family. |
| Cellular localization | Secreted. |

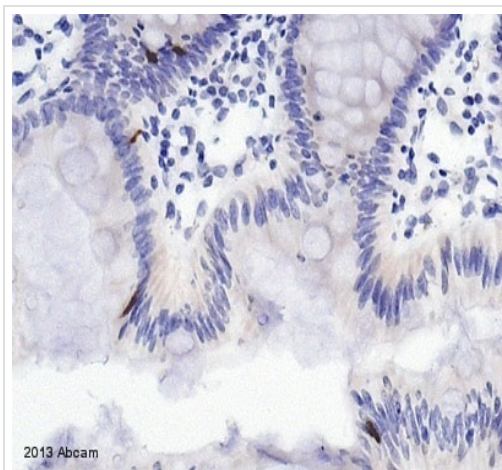
Images



IHC image of Peptide YY/PYY staining in mouse pancreas formalin fixed paraffin embedded tissue section. Antigen retrieval was heat mediated with citrate and sections were blocked in 1% B.S.A for 10 minutes at 21°C. Sample was incubated in primary antibody at 1/6000 for 2 hours and a biotin conjugated goat-anti-rabbit secondary was used at 1/250.

Immunohistochemistry (Formalin/PFA-fixed paraffin-embedded sections) - Anti-Peptide YY/PYY antibody (ab131246)

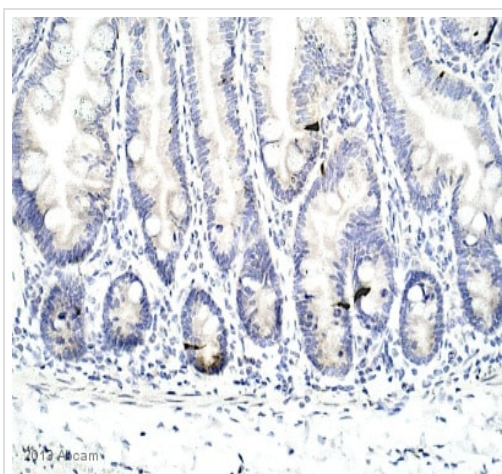
Image courtesy of Carl Hobbs, Kings College London, U.K.



Immunohistochemistry (Formalin/PFA-fixed paraffin-embedded sections) - Anti-Peptide YY/PYY antibody (ab131246)

Image courtesy of Carl Hobbs, Kings College London, U.K.

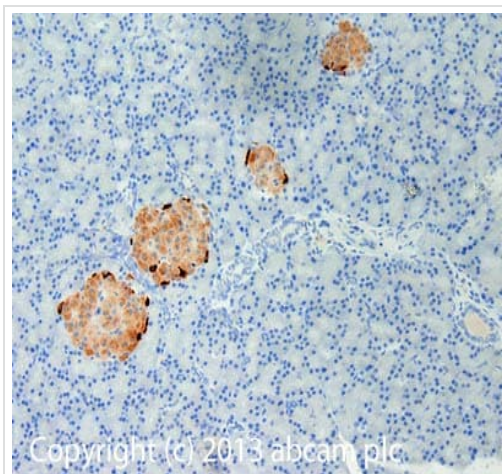
IHC image of Peptide YY/PYY staining in Human colon formalin fixed paraffin embedded tissue section. Antigen retrieval was heat mediated with citrate and sections were blocked in 1% B.S.A for 10 minutes at 21°C. Sample was incubated in primary antibody at 1/8000 for 2 hours and a biotin conjugated goat-anti-rabbit secondary was used at 1/250.



Immunohistochemistry (Formalin/PFA-fixed paraffin-embedded sections) - Anti-Peptide YY/PYY antibody (ab131246)

Image Courtesy of Carl Hobbs, Kings College London, U.K.

IHC image of Peptide YY/PYY staining in marmoset Jejunum formalin fixed paraffin embedded tissue section. Antigen retrieval was heat mediated with citrate and sections were blocked in 1% B.S.A for 10 minutes at 21°C. Sample was incubated in primary antibody at 1/5000 for 2 hours and a biotin conjugated goat-anti-rabbit secondary was used at 1/250.



Immunohistochemistry (Formalin/PFA-fixed paraffin-embedded sections) - Anti-Peptide YY/PYY antibody (ab131246)

IHC image of Peptide YY/PYY staining in Rat normal pancreas formalin fixed paraffin embedded tissue section, performed on a Leica Bond™ system using the standard protocol F. The section was pre-treated using heat mediated antigen retrieval with sodium citrate buffer (pH6, epitope retrieval solution 1) for 20 mins. The section was then incubated with ab131246, 1µg/ml, for 15 mins at room temperature and detected using an HRP conjugated compact polymer system. DAB was used as the chromogen. The section was then counterstained with haematoxylin and mounted with DPX.

For other IHC staining systems (automated and non-automated) customers should optimize variable parameters such as antigen retrieval conditions, primary antibody concentration and antibody incubation times.

Please note: All products are "FOR RESEARCH USE ONLY. NOT FOR USE IN DIAGNOSTIC PROCEDURES"

Our Abpromise to you: Quality guaranteed and expert technical support

- Replacement or refund for products not performing as stated on the datasheet
- Valid for 12 months from date of delivery
- Response to your inquiry within 24 hours
- We provide support in Chinese, English, French, German, Japanese and Spanish
- Extensive multi-media technical resources to help you
- We investigate all quality concerns to ensure our products perform to the highest standards

If the product does not perform as described on this datasheet, we will offer a refund or replacement. For full details of the Abpromise, please visit <https://www.abcam.com/abpromise> or contact our technical team.

Terms and conditions

- Guarantee only valid for products bought direct from Abcam or one of our authorized distributors