

### Anti-Peroxiredoxin 6 antibody ab59543

★★★★★ [10 Abreviews](#) [31 References](#) [4 Images](#)

#### Overview

<b>Product name</b>	Anti-Peroxiredoxin 6 antibody
<b>Description</b>	Rabbit polyclonal to Peroxiredoxin 6
<b>Host species</b>	Rabbit
<b>Tested applications</b>	<b>Suitable for:</b> IHC-P, ICC/IF
<b>Species reactivity</b>	<b>Reacts with:</b> Human
<b>Immunogen</b>	Recombinant full length protein corresponding to Rat Peroxiredoxin 6. Database link: <a href="#">P30041</a>
<b>Positive control</b>	ICC: Mouse macrophages, HeLa cells. IHC-P: Astrocytes.
<b>General notes</b>	<p>Staining pattern: cytoplasm of epithelial cells in the rat and mouse lung and rat and human brain astrocytes. Stains human brain astrocytes in Parkinson's and Alzheimer's disease and the central core of some Lewy bodies in Parkinson's disease and dementia with Lewy bodies.</p> <p>The Life Science industry has been in the grips of a reproducibility crisis for a number of years. Abcam is leading the way in addressing this with our range of recombinant monoclonal antibodies and knockout edited cell lines for gold-standard validation. Please check that this product meets your needs before purchasing.</p> <p>If you have any questions, special requirements or concerns, please send us an inquiry and/or contact our Support team ahead of purchase. Recommended alternatives for this product can be found below, along with publications, customer reviews and Q&amp;As</p>

#### Properties

<b>Form</b>	Liquid
<b>Storage instructions</b>	Shipped at 4°C. Store at +4°C short term (1-2 weeks). Upon delivery aliquot. Store at -20°C or -80°C. Avoid freeze / thaw cycle.
<b>Storage buffer</b>	Preservative: 0.02% Thimerosal (merthiolate) Constituent: Whole serum
<b>Purity</b>	Whole antiserum
<b>Clonality</b>	Polyclonal
<b>Isotype</b>	IgG

## Applications

### The Abpromise guarantee

Our **Abpromise guarantee** covers the use of ab59543 in the following tested applications.

The application notes include recommended starting dilutions; optimal dilutions/concentrations should be determined by the end user.

Application	Abreviews	Notes
IHC-P		Use at an assay dependent concentration.
ICC/IF	★★★★★ (1)	1/50 - 1/100.

## Target

### Function

Involved in redox regulation of the cell. Can reduce H<sub>2</sub>O<sub>2</sub> and short chain organic, fatty acid, and phospholipid hydroperoxides. May play a role in the regulation of phospholipid turnover as well as in protection against oxidative injury.

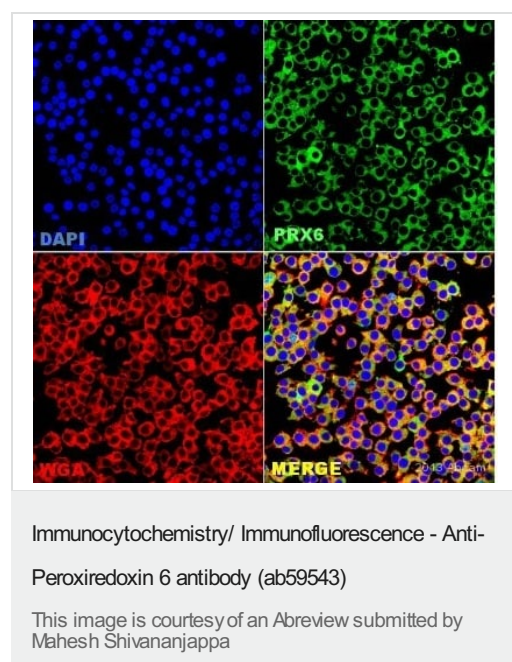
### Sequence similarities

Belongs to the ahpC/TSA family. Rehydrin subfamily.  
Contains 1 thioredoxin domain.

### Cellular localization

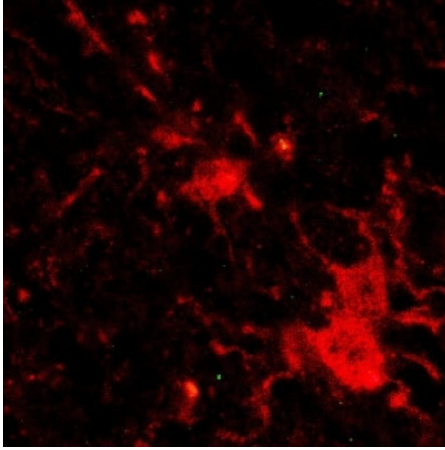
Cytoplasm. Lysosome. Cytoplasmic vesicle. Also found in lung secretory organelles.

## Images



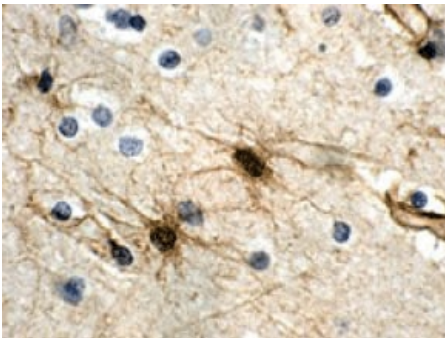
ab59543 staining Peroxiredoxin 6 in RAW264.7 cells from Mouse macrophages by ICC/IF

(Immunocytochemistry/immunofluorescence). Cells were fixed with paraformaldehyde, permeabilized with Triton 0.1% + 2% BSA in PBS and blocked with 2% BSA for 60 minutes at 24°C. Samples were incubated with primary antibody (1/50 in PBS + 2% BSA) for 16 hours at 4°C. An Alexa Fluor®488-conjugated Goat anti-rabbit polyclonal(1/500) was used as the secondary antibody.



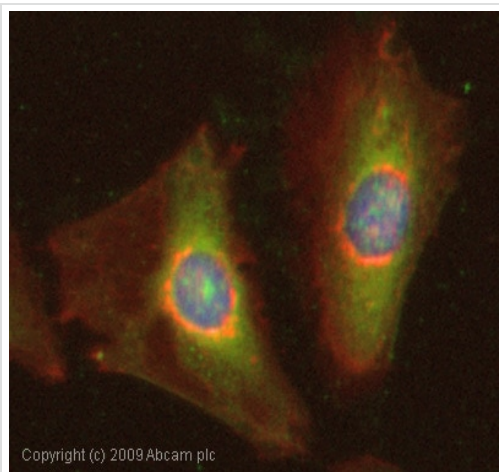
ab59543 at 1/100 dilution staining Peroxiredoxin 6 in astrocytes in Parkinson's disease by Immunohistochemistry. Secondary antibody anti-rabbit IgG conjugated to Cy3 (1/100).

Immunohistochemistry (Formalin/PFA-fixed paraffin-embedded sections) - Anti-Peroxiredoxin 6 antibody (ab59543)



ab59543 at 1/1000 dilution staining Peroxiredoxin 6 in astrocytes in Parkinson's disease by IHC-P. Secondary antibody Donkey anti-rabbit conjugated to biotin.

Immunohistochemistry (Formalin/PFA-fixed paraffin-embedded sections) - Anti-Peroxiredoxin 6 antibody (ab59543)



Immunocytochemistry/ Immunofluorescence - Anti-Peroxiredoxin 6 antibody (ab59543)

ICC/IF image of ab59543 stained HeLa cells. The cells were 100% methanol fixed (5 min) and then incubated in 1%BSA / 10% normal goat serum / 0.3M glycine in 0.1% PBS-Tween for 1h to permeabilise the cells and block non-specific protein-protein interactions. The cells were then incubated with the antibody (ab59543, 1/1000 dilution) overnight at +4°C. The secondary antibody (green) was Alexa Fluor® 488 goat anti-rabbit IgG (H+L) used at a 1/1000 dilution for 1h. Alexa Fluor® 594 WGA was used to label plasma membranes (red) at a 1/200 dilution for 1h. DAPI was used to stain the cell nuclei (blue) at a concentration of 1.43µM.

**Please note:** All products are "FOR RESEARCH USE ONLY. NOT FOR USE IN DIAGNOSTIC PROCEDURES"

### Our Abpromise to you: Quality guaranteed and expert technical support

- Replacement or refund for products not performing as stated on the datasheet
- Valid for 12 months from date of delivery
- Response to your inquiry within 24 hours
- We provide support in Chinese, English, French, German, Japanese and Spanish
- Extensive multi-media technical resources to help you
- We investigate all quality concerns to ensure our products perform to the highest standards

If the product does not perform as described on this datasheet, we will offer a refund or replacement. For full details of the Abpromise, please visit <https://www.abcam.com/abpromise> or contact our technical team.

### Terms and conditions

- Guarantee only valid for products bought direct from Abcam or one of our authorized distributors