

Anti-Pescadillo antibody ab88543

[3 References](#) [4 Images](#)

Overview

Product name	Anti-Pescadillo antibody
Description	Mouse polyclonal to Pescadillo
Host species	Mouse
Tested applications	Suitable for: WB, ICC/IF
Species reactivity	Reacts with: Rat, Human
Immunogen	Recombinant full length protein within Human Pescadillo. The exact immunogen sequence used to generate this antibody is proprietary information. If additional detail on the immunogen is needed to determine the suitability of the antibody for your needs, please contact our Scientific Support team to discuss your requirements.
Positive control	WB: PC-12 and A-431 cell lysates; Pescadillo transfected 293T cell lysate ICC/IF: HeLa cell
General notes	<p>The Life Science industry has been in the grips of a reproducibility crisis for a number of years. Abcam is leading the way in addressing this with our range of recombinant monoclonal antibodies and knockout edited cell lines for gold-standard validation. Please check that this product meets your needs before purchasing.</p> <p>If you have any questions, special requirements or concerns, please send us an inquiry and/or contact our Support team ahead of purchase. Recommended alternatives for this product can be found below, along with publications, customer reviews and Q&As</p>

Properties

Form	Liquid
Storage instructions	Shipped at 4°C. Upon delivery aliquot and store at -20°C or -80°C. Avoid repeated freeze / thaw cycles.
Storage buffer	pH: 7.40 Constituent: 100% PBS
Purity	Protein A purified
Clonality	Polyclonal
Isotype	IgG

Applications

The Abpromise guarantee

Our **Abpromise guarantee** covers the use of ab88543 in the following tested applications.

The application notes include recommended starting dilutions; optimal dilutions/concentrations should be determined by the end user.

Application	Abreviews	Notes
WB		Use a concentration of 1 µg/ml. Predicted molecular weight: 68 kDa.
ICC/IF		Use a concentration of 10 µg/ml.

Target

Function

Component of the PeBoW complex, which is required for maturation of 28S and 5.8S ribosomal RNAs and formation of the 60S ribosome.

Tissue specificity

Significant levels are detected in a variety of cancer cell lines, including glioblastoma, breast carcinoma, colon carcinoma and cervical carcinoma cells. Levels are abnormally elevated in malignant tumors of astrocytic origin.

Sequence similarities

Belongs to the pescadillo family.
Contains 1 BRCT domain.

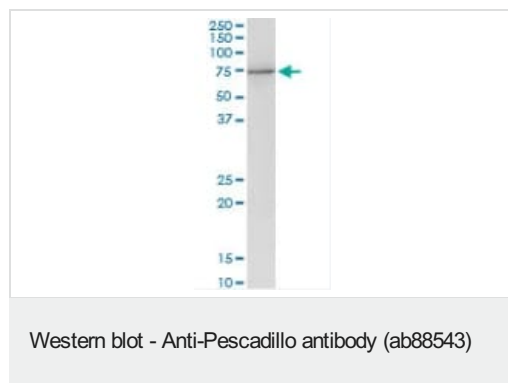
Post-translational modifications

Sumoylated.

Cellular localization

Nucleus > nucleolus. Nucleus > nucleoplasm. Chromosome. Appears to localize to the periphery of metaphase chromosomes during mitosis and to the prenucleolar bodies that form in mitotic cells prior to the actual nucleoli.

Images



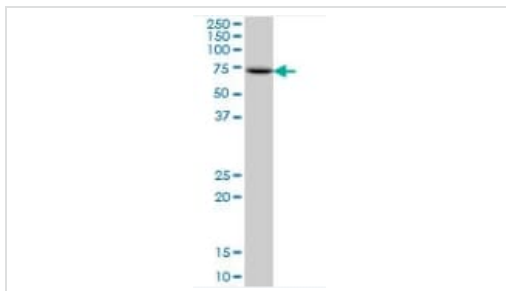
Anti-Pescadillo antibody (ab88543) at 1 µg/ml + PC-12 cell lysate at 50 µg

Secondary

Goat Anti-Mouse IgG (H&L)-HRP Conjugate at 1/2500 dilution

Predicted band size: 68 kDa

Observed band size: 75 kDa



Western blot - Anti-Pescadillo antibody (ab88543)

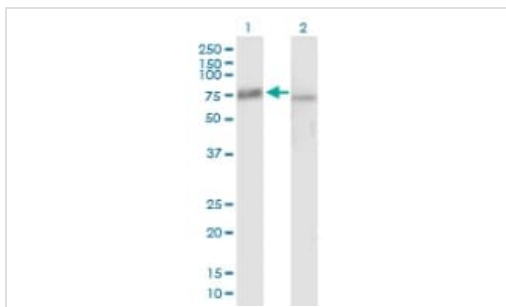
Anti-Pescadillo antibody (ab88543) at 1 µg/ml + A-431 cell lysate at 50 µg

Secondary

Goat Anti-Mouse IgG (H&L)-HRP Conjugate at 1/2500 dilution

Predicted band size: 68 kDa

Observed band size: 73 kDa



Western blot - Anti-Pescadillo antibody (ab88543)

All lanes : Anti-Pescadillo antibody (ab88543) at 1 µg/ml

Lane 1 : Pescadillo transfected 293T cell lysate

Lane 2 : Non transfected 293T cell lysate

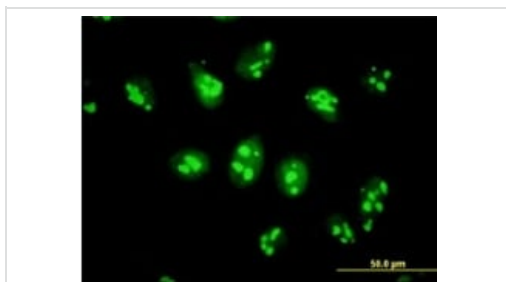
Lysates/proteins at 50 µg per lane.

Secondary

All lanes : Goat Anti-Mouse IgG (H&L)-HRP Conjugate at 1/2500 dilution

Predicted band size: 68 kDa

Observed band size: 75 kDa



Immunocytochemistry/ Immunofluorescence - Anti-Pescadillo antibody (ab88543)

ab88543, at 10 µg/ml, staining Pescadillo in HeLa cell by Immunofluorescence.

Please note: All products are "FOR RESEARCH USE ONLY. NOT FOR USE IN DIAGNOSTIC PROCEDURES"

Our Abpromise to you: Quality guaranteed and expert technical support

- Replacement or refund for products not performing as stated on the datasheet
- Valid for 12 months from date of delivery
- Response to your inquiry within 24 hours
- We provide support in Chinese, English, French, German, Japanese and Spanish

- Extensive multi-media technical resources to help you
- We investigate all quality concerns to ensure our products perform to the highest standards

If the product does not perform as described on this datasheet, we will offer a refund or replacement. For full details of the Abpromise, please visit <https://www.abcam.com/abpromise> or contact our technical team.

Terms and conditions

- Guarantee only valid for products bought direct from Abcam or one of our authorized distributors