


Product datasheet

Anti-PGAM1 antibody [EPR8042] ab129191

Recombinant RabMAb

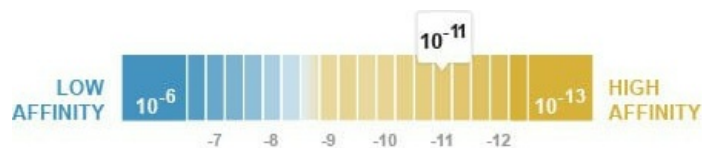
★★★★★ [1 Abreviews](#) [4 References](#) [4 Images](#)

Overview

| | |
|----------------------------|--|
| Product name | Anti-PGAM1 antibody [EPR8042] |
| Description | Rabbit monoclonal [EPR8042] to PGAM1 |
| Host species | Rabbit |
| Tested applications | Suitable for: Flow Cyt (Intra), WB Unsuitable for: ICC/IF, IHC-P or IP |
| Species reactivity | Reacts with: Human Predicted to work with: Mouse, Rat  |
| Immunogen | Synthetic peptide within Human PGAM1 (N terminal). The exact sequence is proprietary. |
| Positive control | Jurkat, Human fetal muscle, A431, and Raji cell lysates; permeabilized Raji cells. |
| General notes | This product is a recombinant monoclonal antibody, which offers several advantages including: <ul style="list-style-type: none"> - High batch-to-batch consistency and reproducibility - Improved sensitivity and specificity - Long-term security of supply - Animal-free production For more information see here . Our RabMAb [®] technology is a patented hybridoma-based technology for making rabbit monoclonal antibodies. For details on our patents, please refer to RabMAb[®] patents . |

Properties

| | |
|--|--|
| Form | Liquid |
| Storage instructions | Shipped at 4°C. Store at -20°C. Stable for 12 months at -20°C. |
| Dissociation constant (K_D) | K _D = 1.50 x 10 ⁻¹¹ M |



[Learn more about K_D](#)

| | |
|-----------------------|----------|
| Storage buffer | pH: 7.20 |
|-----------------------|----------|

Preservative: 0.01% Sodium azide
Constituents: 9% PBS, 40% Glycerol (glycerin, glycerine), 0.05% BSA, 50% Tissue culture supernatant

Purity Tissue culture supernatant
Clonality Monoclonal
Clone number EPR8042
Isotype IgG

Applications

The Abpromise guarantee Our **Abpromise guarantee** covers the use of ab129191 in the following tested applications. The application notes include recommended starting dilutions; optimal dilutions/concentrations should be determined by the end user.

| Application | Abreviews | Notes |
|------------------|-----------|--|
| Flow Cyt (Intra) | | 1/100 - 1/500. ab172730 - Rabbit monoclonal IgG, is suitable for use as an isotype control with this antibody. |
| WB | ★★★★★ (1) | 1/1000 - 1/10000. Detects a band of approximately 29 kDa (predicted molecular weight: 29 kDa). |

Application notes Is unsuitable for ICC/IF, IHC-P or IP.

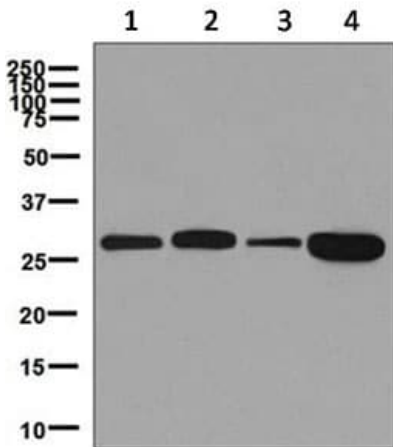
Target

Function Interconversion of 3- and 2-phosphoglycerate with 2,3-bisphosphoglycerate as the primer of the reaction. Can also catalyze the reaction of EC 5.4.2.4 (synthase) and EC 3.1.3.13 (phosphatase), but with a reduced activity.

Tissue specificity In mammalian tissues there are two types of phosphoglycerate mutase isozymes: type-M in muscles and type-B in other tissues.

Sequence similarities Belongs to the phosphoglycerate mutase family. BPG-dependent PGAM subfamily.

Images



Western blot - Anti-PGAM1 antibody [EPR8042] (ab129191)

All lanes : Anti-PGAM1 antibody [EPR8042] (ab129191) at 1/1000 dilution

Lane 1 : Jurkat cell lysate

Lane 2 : Human fetal muscle tissue lysate

Lane 3 : A431 cell lysate

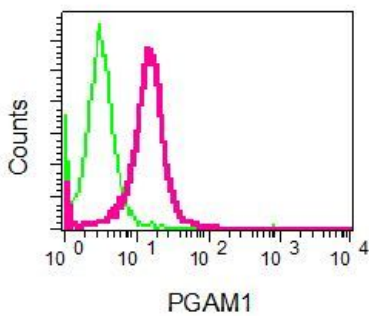
Lane 4 : Raji cell lysate

Lysates/proteins at 10 µg per lane.

Secondary

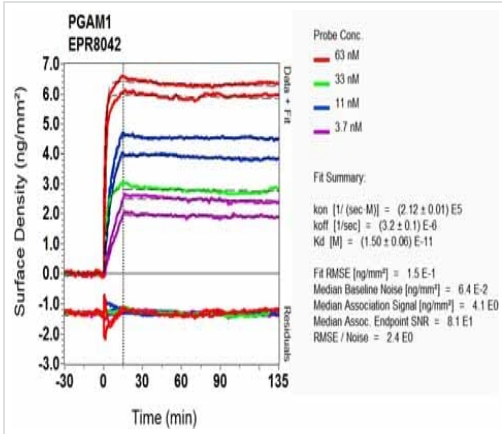
All lanes : HRP labelled goat anti-rabbit at 1/2000 dilution

Predicted band size: 29 kDa



Flow Cytometry (Intracellular) - Anti-PGAM1 antibody [EPR8042] (ab129191)

ab129191 at 1/100 dilution staining PGAM1 in permeabilized Raji cells by intracellular flow cytometry or a rabbit IgG negative control (green).



Equilibrium disassociation constant (K_D)

Learn more about K_D

[Click here to learn more about \$K_D\$](#)

OI-RD Scanning - Anti-PGAM1 antibody [EPR8042]
(ab129191)

Why choose a recombinant antibody?

Research with confidence
Consistent and reproducible results

Long-term and scalable supply
Recombinant technology

Success from the first experiment
Confirmed specificity

Ethical standards compliant
Animal-free production

Anti-PGAM1 antibody [EPR8042] (ab129191)

Please note: All products are "FOR RESEARCH USE ONLY. NOT FOR USE IN DIAGNOSTIC PROCEDURES"

Our Abpromise to you: Quality guaranteed and expert technical support

- Replacement or refund for products not performing as stated on the datasheet
- Valid for 12 months from date of delivery
- Response to your inquiry within 24 hours
- We provide support in Chinese, English, French, German, Japanese and Spanish
- Extensive multi-media technical resources to help you

- We investigate all quality concerns to ensure our products perform to the highest standards

If the product does not perform as described on this datasheet, we will offer a refund or replacement. For full details of the Abpromise, please visit <https://www.abcam.com/abpromise> or contact our technical team.

Terms and conditions

- Guarantee only valid for products bought direct from Abcam or one of our authorized distributors