

Anti-PGM1 antibody [EPR15240] α b188869

Recombinant RabMAb

6 Images

Overview

Product name	Anti-PGM1 antibody [EPR15240]
Description	Rabbit monoclonal [EPR15240] to PGM1
Host species	Rabbit
Tested applications	Suitable for: WB, IP, ICC/IF, Flow Cyt (Intra)
Species reactivity	Reacts with: Human
Immunogen	Synthetic peptide. This information is proprietary to Abcam and/or its suppliers.
Positive control	Human fetal heart, fetal liver, HepG2, 293T and Jurkat lysates; 293T cells.
General notes	<p>This product is a recombinant monoclonal antibody, which offers several advantages including:</p> <ul style="list-style-type: none"> - High batch-to-batch consistency and reproducibility - Improved sensitivity and specificity - Long-term security of supply - Animal-free production <p>For more information see here.</p> <p>Our RabMAb[®] technology is a patented hybridoma-based technology for making rabbit monoclonal antibodies. For details on our patents, please refer to RabMAb[®] patents.</p>

Properties

Form	Liquid
Storage instructions	Shipped at 4°C. Store at +4°C short term (1-2 weeks). Upon delivery aliquot. Store at -20°C long term. Avoid freeze / thaw cycle.
Storage buffer	<p>pH: 7.2</p> <p>Preservative: 0.01% Sodium azide</p> <p>Constituents: 40% Glycerol (glycerin, glycerine), 59% PBS, 0.05% BSA</p>
Purity	Protein A purified
Clonality	Monoclonal
Clone number	EPR15240
Isotype	IgG

Applications

The Abpromise guarantee

Our **Abpromise guarantee** covers the use of ab188869 in the following tested applications.

The application notes include recommended starting dilutions; optimal dilutions/concentrations should be determined by the end user.

Application	Abreviews	Notes
WB		1/1000 - 1/2000. Detects a band of approximately 61 kDa (predicted molecular weight: 61 kDa).
IP		1/30 - 1/50.
ICC/IF		1/250.
Flow Cyt (Intra)		1/360. ab172730 - Rabbit monoclonal IgG, is suitable for use as an isotype control with this antibody.

Target

Function

This enzyme participates in both the breakdown and synthesis of glucose.

Involvement in disease

Defects in PGM1 are the cause of glycogen storage disease type 14 (GSD14) [MIM:612934]. A metabolic disorder resulting in a myopathy characterized by exercise-induced intolerance with episodes of rhabdomyolysis, normal elevation of lactate, and hyperammonemia on a forearm-exercise test.

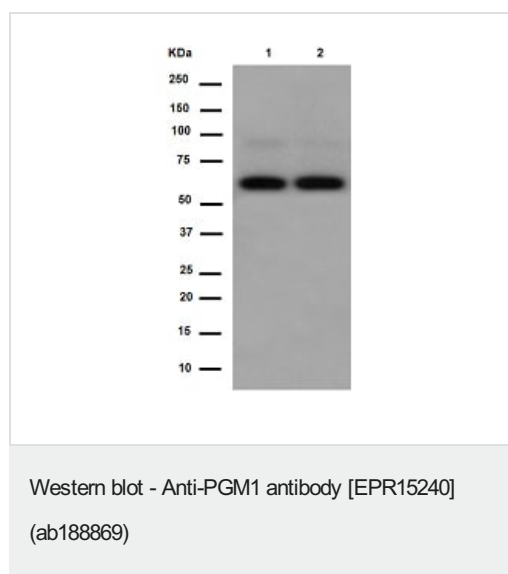
Sequence similarities

Belongs to the phosphohexose mutase family.

Cellular localization

Cytoplasm.

Images



All lanes : Anti-PGM1 antibody [EPR15240] (ab188869) at 1/1000 dilution

Lane 1 : HepG2 cell lysate

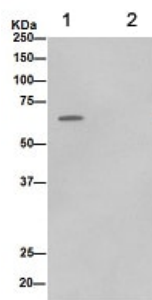
Lane 2 : Jurkat cell lysate

Lysates/proteins at 20 µg per lane.

Secondary

All lanes : Goat Anti-Rabbit IgG, (H+L), Peroxidase conjugate at 1/1000 dilution

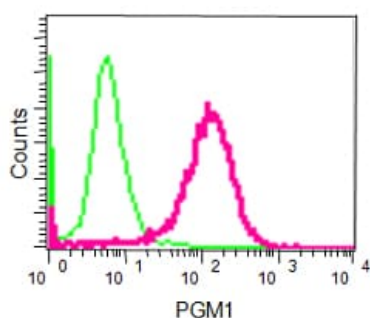
Predicted band size: 61 kDa



Immunoprecipitation - Anti-PGM1 antibody
[EPR15240] (ab188869)

Western blot analysis of immunoprecipitation pellet from Human fetal liver lysate immunoprecipitated using ab188869 at 1/50 dilution.

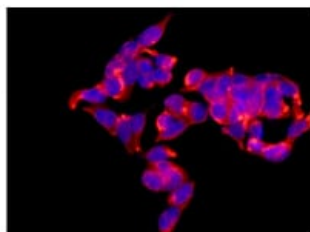
Secondary: Anti-Rabbit IgG (HRP), specific to the non-reduced form of IgG at 1/1500 dilution.



Flow Cytometry (Intracellular) - Anti-PGM1 antibody
[EPR15240] (ab188869)

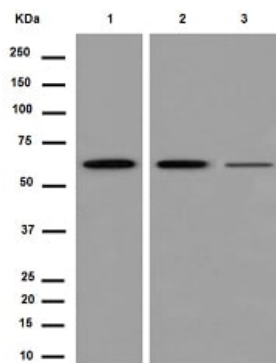
Intracellular flow cytometric analysis of 293T cells

(paraformaldehyde-fixed, 2%) labeling PGM1 with ab188869 at 1/360 dilution (red) or a rabbit IgG (negative) (green), followed by Goat anti rabbit IgG (FITC) secondary at 1/150 dilution.



Immunocytochemistry/ Immunofluorescence - Anti-PGM1 antibody [EPR15240] (ab188869)

Immunofluorescent analysis of 293T cells (4% Paraformaldehyde-fixed) labeling PGM1 with ab188869 at 1/250 dilution followed by Goat anti rabbit IgG (Alexa Fluor® 555) secondary at 1/200 dilution and counter-stained with DAPI (blue).



Western blot - Anti-PGM1 antibody [EPR15240] (ab188869)

All lanes : Anti-PGM1 antibody [EPR15240] (ab188869) at 1/1000 dilution

Lane 1 : Human fetal heart lysate

Lane 2 : Human fetal liver lysate

Lane 3 : 293T lysate

Lysates/proteins at 10 µg per lane.

Secondary

All lanes : Anti-Rabbit IgG (HRP), specific to the non-reduced form of IgG at 1/500 dilution

Predicted band size: 61 kDa

Why choose a recombinant antibody?



Research with confidence
Consistent and reproducible results



Long-term and scalable supply
Recombinant technology



Success from the first experiment
Confirmed specificity



Ethical standards compliant
Animal-free production

Anti-PGM1 antibody [EPR15240] (ab188869)

Please note: All products are "FOR RESEARCH USE ONLY. NOT FOR USE IN DIAGNOSTIC PROCEDURES"

Our Abpromise to you: Quality guaranteed and expert technical support

- Replacement or refund for products not performing as stated on the datasheet
- Valid for 12 months from date of delivery
- Response to your inquiry within 24 hours
- We provide support in Chinese, English, French, German, Japanese and Spanish
- Extensive multi-media technical resources to help you
- We investigate all quality concerns to ensure our products perform to the highest standards

If the product does not perform as described on this datasheet, we will offer a refund or replacement. For full details of the Abpromise, please visit <https://www.abcam.com/abpromise> or contact our technical team.

Terms and conditions

- Guarantee only valid for products bought direct from Abcam or one of our authorized distributors