

Anti-PGRMC2 antibody ab104437

1 Image

Overview

| | |
|----------------------------|---|
| Product name | Anti-PGRMC2 antibody |
| Description | Rabbit polyclonal to PGRMC2 |
| Host species | Rabbit |
| Tested applications | Suitable for: IP |
| Species reactivity | Reacts with: Human |
| Immunogen | Synthetic peptide corresponding to Human PGRMC2 aa 1-100. Database link: O15173 |
| Positive control | HeLa whole cell lysate |
| General notes | <p>The Life Science industry has been in the grips of a reproducibility crisis for a number of years. Abcam is leading the way in addressing this with our range of recombinant monoclonal antibodies and knockout edited cell lines for gold-standard validation. Please check that this product meets your needs before purchasing.</p> <p>If you have any questions, special requirements or concerns, please send us an inquiry and/or contact our Support team ahead of purchase. Recommended alternatives for this product can be found below, along with publications, customer reviews and Q&As</p> |

Properties

| | |
|-----------------------------|---|
| Form | Liquid |
| Storage instructions | Shipped at 4°C. Upon delivery aliquot and store at -20°C. Avoid freeze / thaw cycles. |
| Storage buffer | pH: 7 Preservative: 0.09% Sodium azide Constituent: Tris citrate/phosphate |
| Purity | Immunogen affinity purified |
| Clonality | Polyclonal |
| Isotype | IgG |

Applications

The Abpromise guarantee Our [Abpromise guarantee](#) covers the use of ab104437 in the following tested applications.

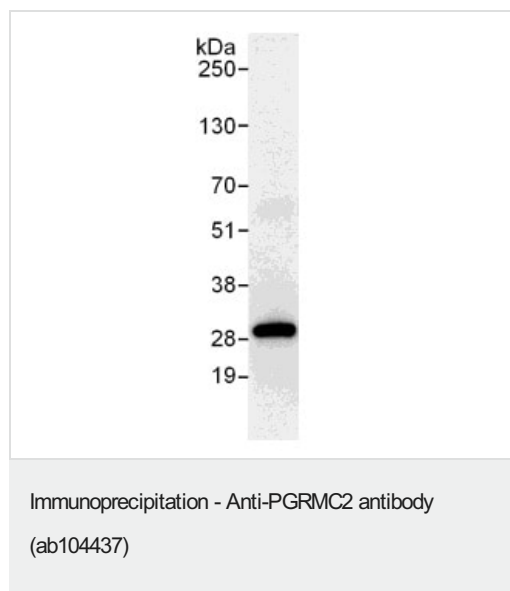
The application notes include recommended starting dilutions; optimal dilutions/concentrations should be determined by the end user.

| Application | Abreviews | Notes |
|-------------|-----------|-----------------------------|
| IP | | Use at 2-5 µg/mg of lysate. |

Target

| | |
|-----------------------|--|
| Relevance | Membrane associated progesterone receptor component 2 (PGRMC2) belongs to the cytochrome b5 family. The molecular function is primarily steroid binding. |
| Cellular localization | Cell Membrane |

Images



Detection of PGRMC2 in immunoprecipitates of HeLa whole cell lysate (1 mg lysate for IP, 20% of IP loaded on gel) using ab104437 at 3 µg/mg lysate for IP. An anti-PGRMC2 antibody which recognizes a downstream epitope was used at 1 µg/ml for subsequent western blot detection.

Detection: chemiluminescence with exposure time of 10 seconds.

Please note: All products are "FOR RESEARCH USE ONLY. NOT FOR USE IN DIAGNOSTIC PROCEDURES"

Our Abpromise to you: Quality guaranteed and expert technical support

- Replacement or refund for products not performing as stated on the datasheet
- Valid for 12 months from date of delivery
- Response to your inquiry within 24 hours
- We provide support in Chinese, English, French, German, Japanese and Spanish
- Extensive multi-media technical resources to help you
- We investigate all quality concerns to ensure our products perform to the highest standards

If the product does not perform as described on this datasheet, we will offer a refund or replacement. For full details of the Abpromise, please visit <https://www.abcam.com/abpromise> or contact our technical team.

Terms and conditions

- Guarantee only valid for products bought direct from Abcam or one of our authorized distributors