




Product datasheet

Anti-PHAPI2 / APRIL antibody ab4224

[3 References](#) [4 Images](#)

Overview

Product name	Anti-PHAPI2 / APRIL antibody
Description	Goat polyclonal to PHAPI2 / APRIL
Host species	Goat
Specificity	This antibody does NOT recognize the TNF family member also known as APRIL - LocusLink Number 8741
Tested applications	Suitable for: IHC-P, WB
Species reactivity	Reacts with: Mouse, Rat, Human, Pig Predicted to work with: Cow, Dog 
Immunogen	Synthetic peptide: KRKRETDDEGEDD, corresponding to C terminal amino acids 237-249 of Human PHAPI2/ APRIL.  Run BLAST with ExPASy  Run BLAST with NCBI
Positive control	Human Tonsil lysate.
General notes	<p>The Life Science industry has been in the grips of a reproducibility crisis for a number of years. Abcam is leading the way in addressing this with our range of recombinant monoclonal antibodies and knockout edited cell lines for gold-standard validation. Please check that this product meets your needs before purchasing.</p> <p>If you have any questions, special requirements or concerns, please send us an inquiry and/or contact our Support team ahead of purchase. Recommended alternatives for this product can be found below, along with publications, customer reviews and Q&As</p>

Properties

Form	Liquid
Storage instructions	Shipped at 4°C. Upon delivery aliquot and store at -20°C or -80°C. Avoid repeated freeze / thaw cycles.
Storage buffer	pH: 7.30 Preservative: 0.02% Sodium azide Constituents: 0.5% Tris, 0.5% BSA
Purity	Immunogen affinity purified
Purification notes	Purified from goat serum by ammonium sulphate precipitation followed by antigen affinity chromatography using the immunizing peptide.

Clonality	Polyclonal
Isotype	IgG

Applications

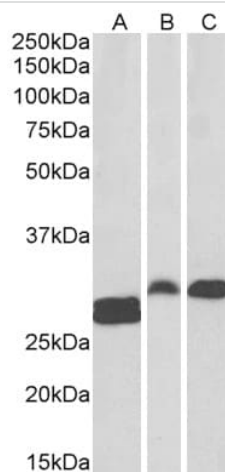
The Abpromise guarantee Our **Abpromise guarantee** covers the use of ab4224 in the following tested applications. The application notes include recommended starting dilutions; optimal dilutions/concentrations should be determined by the end user.

Application	Abreviews	Notes
IHC-P		Use a concentration of 3 - 5 µg/ml. Perform heat mediated antigen retrieval with citrate buffer pH 6 before commencing with IHC staining protocol.
WB		Use a concentration of 0.1 - 0.3 µg/ml. Detects a band of approximately 30 kDa (predicted molecular weight: 29 kDa). 1 hour primary incubation is recommended for this product.

Target

Function	Multifunctional protein working as a cell cycle progression factor as well as a cell survival factor. Required for the progression from the G1 to the S phase. Anti-apoptotic protein which functions as a caspase-3 inhibitor. Has no phosphatase 2A (PP2A) inhibitor activity (By similarity). Exhibits histone chaperone properties, stimulating core histones to assemble into a nucleosome.
Tissue specificity	Expressed in heart, lung, pancreas, prostate and in spleen, thymus and placenta.
Sequence similarities	Belongs to the ANP32 family. Contains 4 LRR (leucine-rich) repeats. Contains 1 LRRCT domain.
Domain	Histone binding is mediated by the concave surface of the LRR region.
Post-translational modifications	Some glutamate residues are glycosylated by TTLL8. This modification occurs exclusively on glutamate residues and results in a glycine chain on the gamma-carboxyl group.
Cellular localization	Nucleus. Accumulates in the nuclei at the S phase and Cytoplasm. Lacks a nuclear localization signal.

Images



Western blot - Anti-PHAPI2 / APRIL antibody
(ab4224)

All lanes : Anti-PHAPI2 / APRIL antibody (ab4224) at 0.1 $\mu\text{g/ml}$

Lane 1 : Human tonsil lysate

Lane 2 : Rat spleen lysate

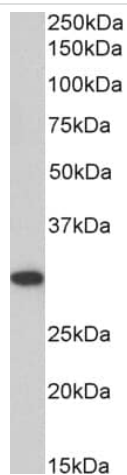
Lane 3 : Pig spleen lysate

Lysates/proteins at 35 mg/ml per lane.

Predicted band size: 29 kDa

Observed band size: 28-30 kDa

Primary incubation was 1 hour. Detected by chemiluminescence.



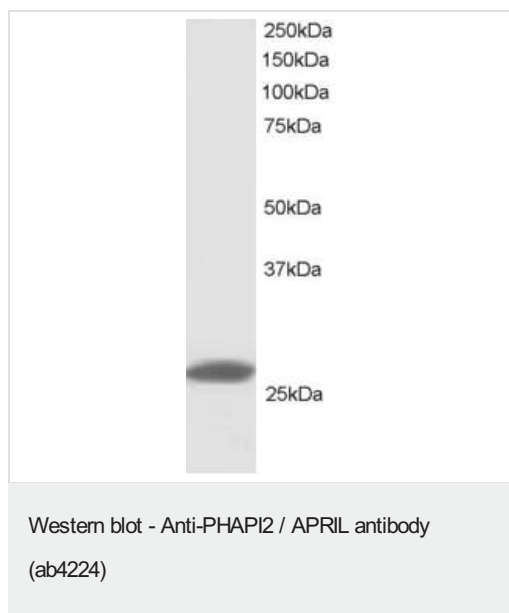
Western blot - Anti-PHAPI2 / APRIL antibody
(ab4224)

Anti-PHAPI2 / APRIL antibody (ab4224) at 0.1 $\mu\text{g/ml}$ + NIH3T3 cell
lysate at 35 μg

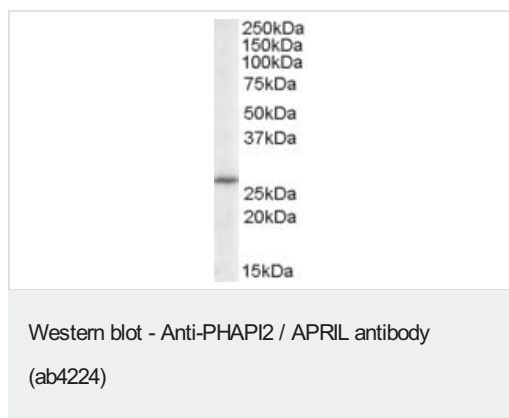
Predicted band size: 29 kDa

Observed band size: 30 kDa

Primary incubation was 1 hour. Detected by chemiluminescence.



ab4224 at a concentration of 1 µg/ml, staining ~30 kDa PHAP I2 in human lymph node lysate (RIPA bufer, 30 µg total proteion per lane) by western blot (primary incubated for 1 hour, detected by ECL).
 ab4224 at a concentration of 1 µg/ml, staining ~30 kDa PHAP I2 in human lymph node lysate (RIPA bufer, 30 µg total proteion per lane) by western blot (primary incubated for 1 hour, detected by ECL).



Anti-PHAPI2 / APRIL antibody (ab4224) at 0.3 µg/ml + A431 lysate in RIPA buffer at 35 µg

Developed using the ECL technique.

Predicted band size: 29 kDa

Observed band size: 29 kDa

Please note: All products are "FOR RESEARCH USE ONLY. NOT FOR USE IN DIAGNOSTIC PROCEDURES"

Our Abpromise to you: Quality guaranteed and expert technical support

- Replacement or refund for products not performing as stated on the datasheet
- Valid for 12 months from date of delivery
- Response to your inquiry within 24 hours
- We provide support in Chinese, English, French, German, Japanese and Spanish
- Extensive multi-media technical resources to help you
- We investigate all quality concerns to ensure our products perform to the highest standards

If the product does not perform as described on this datasheet, we will offer a refund or replacement. For full details of the Abpromise, please visit <https://www.abcam.com/abpromise> or contact our technical team.

Terms and conditions

- Guarantee only valid for products bought direct from Abcam or one of our authorized distributors