


# Anti-PHF16 antibody ab129495

[1 References](#) [2 Images](#)

### Overview

<b>Product name</b>	Anti-PHF16 antibody
<b>Description</b>	Rabbit polyclonal to PHF16
<b>Host species</b>	Rabbit
<b>Tested applications</b>	<b>Suitable for:</b> WB, IP
<b>Species reactivity</b>	<b>Reacts with:</b> Human <b>Predicted to work with:</b> Guinea pig, Chimpanzee, Rhesus monkey, Gorilla, Orangutan 
<b>Immunogen</b>	Synthetic peptide, corresponding to a region within amino acids 773-823 of Human PHF16 (NP_055550.1).
<b>Positive control</b>	HeLa, 293T and Jurkat whole cell lysates.
<b>General notes</b>	<p>The Life Science industry has been in the grips of a reproducibility crisis for a number of years. Abcam is leading the way in addressing this with our range of recombinant monoclonal antibodies and knockout edited cell lines for gold-standard validation. Please check that this product meets your needs before purchasing.</p> <p>If you have any questions, special requirements or concerns, please send us an inquiry and/or contact our Support team ahead of purchase. Recommended alternatives for this product can be found below, along with publications, customer reviews and Q&amp;As</p>

### Properties

<b>Form</b>	Liquid
<b>Storage instructions</b>	Shipped at 4°C. Store at +4°C.
<b>Storage buffer</b>	pH: 7 Preservative: 0.09% Sodium azide Constituent: 99% Tris citrate/phosphate
<b>Purity</b>	pH 7-8 Immunogen affinity purified
<b>Purification notes</b>	ab129495 was affinity purified using an epitope specific to PHF16 immobilized on solid support.
<b>Clonality</b>	Polyclonal
<b>Isotype</b>	IgG

## Applications

### The Abpromise guarantee

Our **Abpromise guarantee** covers the use of ab129495 in the following tested applications.

The application notes include recommended starting dilutions; optimal dilutions/concentrations should be determined by the end user.

Application	Abreviews	Notes
WB		1/1000 - 1/5000. Predicted molecular weight: 94 kDa.
IP		Use at 2-10 µg/mg of lysate.

## Target

### Function

Component of the HBO1 complex which has a histone H4-specific acetyltransferase activity, a reduced activity toward histone H3 and is responsible for the bulk of histone H4 acetylation in vivo.

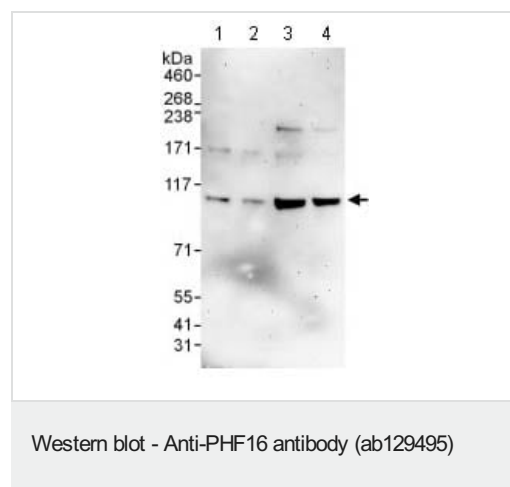
### Tissue specificity

Ubiquitously expressed, with highest levels in placenta and uterus.

### Sequence similarities

Belongs to the JADE family.  
Contains 1 PHD-type zinc finger.

## Images



**All lanes :** Anti-PHF16 antibody (ab129495) at 0.4 µg/ml

**Lane 1 :** HeLa whole cell lysate at 50 µg

**Lane 2 :** HeLa whole cell lysate at 15 µg

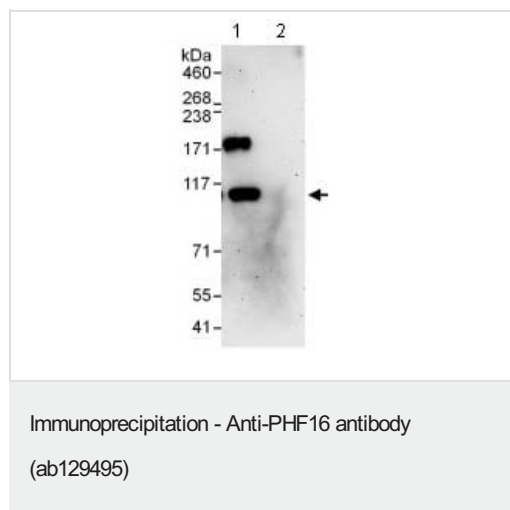
**Lane 3 :** 293T whole cell lysate at 50 µg

**Lane 4 :** Jurkat whole cell lysate at 50 µg

Developed using the ECL technique.

**Predicted band size:** 94 kDa

**Exposure time:** 3 minutes



Detection of PHF16 by Western Blot of Immunoprecipitate.  
ab129495 at 1 µg/ml staining PHF16 in HeLa whole cell lysate  
immunoprecipitated using ab129495 at 6 µg/mg lysate (1 mg/IP;  
20% of IP loaded/lane).  
Lane 2: control IgG.  
Predicted band size : 94 kDa.  
Detection: Chemiluminescence with exposure time of 3 minutes.

**Please note:** All products are "FOR RESEARCH USE ONLY. NOT FOR USE IN DIAGNOSTIC PROCEDURES"

### Our Abpromise to you: Quality guaranteed and expert technical support

- Replacement or refund for products not performing as stated on the datasheet
- Valid for 12 months from date of delivery
- Response to your inquiry within 24 hours
- We provide support in Chinese, English, French, German, Japanese and Spanish
- Extensive multi-media technical resources to help you
- We investigate all quality concerns to ensure our products perform to the highest standards

If the product does not perform as described on this datasheet, we will offer a refund or replacement. For full details of the Abpromise, please visit <https://www.abcam.com/abpromise> or contact our technical team.

### Terms and conditions

- Guarantee only valid for products bought direct from Abcam or one of our authorized distributors