

Product datasheet

Anti-PHO8 antibody [1D3A10] ab113688

[10 References](#) [1 Image](#)

Overview

Product name	Anti-PHO8 antibody [1D3A10]
Description	Mouse monoclonal [1D3A10] to PHO8
Host species	Mouse
Tested applications	Suitable for: WB, ICC/IF
Species reactivity	Reacts with: Saccharomyces cerevisiae
Immunogen	Full length native protein (purified). This information is considered to be commercially sensitive.
Positive control	Yeast lysate
General notes	<p>This antibody clone is manufactured by Abcam. If you require a custom buffer formulation or conjugation for your experiments, please contact orders@abcam.com.</p> <p>The Life Science industry has been in the grips of a reproducibility crisis for a number of years. Abcam is leading the way in addressing this with our range of recombinant monoclonal antibodies and knockout edited cell lines for gold-standard validation. Please check that this product meets your needs before purchasing.</p> <p>If you have any questions, special requirements or concerns, please send us an inquiry and/or contact our Support team ahead of purchase. Recommended alternatives for this product can be found below, along with publications, customer reviews and Q&As</p> <p>Product was previously marketed under the MitoSciences sub-brand.</p>

Properties

Form	Liquid
Storage instructions	Shipped at 4°C. Store at +4°C.
Storage buffer	<p>pH: 7.5</p> <p>Preservative: 0.02% Sodium azide</p> <p>Constituent: HEPES buffered saline</p>
Purity	Proprietary Purification
Purification notes	Near homogeneity (Purity >95% by SDS-PAGE). The antibody was produced in vitro using hybridomas grown in serum-free medium, and then purified by chemical fractionation.
Clonality	Monoclonal

Clone number	1D3A10
Isotype	IgG1
Light chain type	kappa

Applications

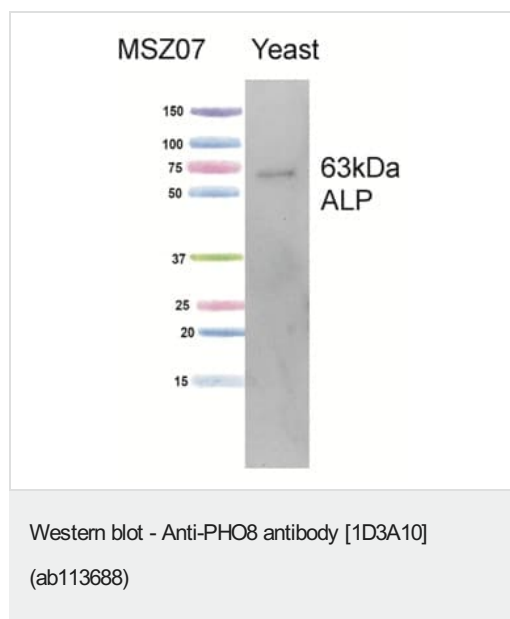
The Abpromise guarantee Our **Abpromise guarantee** covers the use of ab113688 in the following tested applications. The application notes include recommended starting dilutions; optimal dilutions/concentrations should be determined by the end user.

Application	Abreviews	Notes
WB		Use a concentration of 4 µg/ml. Detects a band of approximately 63 kDa (predicted molecular weight: 63 kDa).
ICC/IF		Use a concentration of 20 µg/ml.

Target

Function	Phosphatase with broad substrate specificity. A truncated (soluble) version of the protein is responsible for the production of (E,E)-farnesol from (E,E)-farnesyl diphosphate.
Sequence similarities	Belongs to the alkaline phosphatase family.
Cellular localization	Cytoplasm. The truncated version of the protein is soluble and Vacuole membrane. The full-length version is found in lysosome-like vacuoles.

Images



Anti-PHO8 antibody [1D3A10] (ab113688) + Yeast whole cell lysate at 15 µg

Predicted band size: 63 kDa

Please note: All products are "FOR RESEARCH USE ONLY. NOT FOR USE IN DIAGNOSTIC PROCEDURES"

Our Abpromise to you: Quality guaranteed and expert technical support

- Replacement or refund for products not performing as stated on the datasheet
- Valid for 12 months from date of delivery
- Response to your inquiry within 24 hours
- We provide support in Chinese, English, French, German, Japanese and Spanish
- Extensive multi-media technical resources to help you
- We investigate all quality concerns to ensure our products perform to the highest standards

If the product does not perform as described on this datasheet, we will offer a refund or replacement. For full details of the Abpromise, please visit <https://www.abcam.com/abpromise> or contact our technical team.

Terms and conditions

- Guarantee only valid for products bought direct from Abcam or one of our authorized distributors