

Product datasheet

Anti-Phosphatidic acid phosphatase type 2B antibody ab203216

[2 Images](#)

Overview

Product name	Anti-Phosphatidic acid phosphatase type 2B antibody
Description	Rabbit polyclonal to Phosphatidic acid phosphatase type 2B
Host species	Rabbit
Tested applications	Suitable for: IHC-P
Species reactivity	Reacts with: Mouse
Immunogen	Synthetic peptide within Human Phosphatidic acid phosphatase type 2B aa 250 to the C-terminus conjugated to keyhole limpet haemocyanin. The exact immunogen sequence used to generate this antibody is proprietary information. If additional detail on the immunogen is needed to determine the suitability of the antibody for your needs, please contact our Scientific Support team to discuss your requirements. Database link: O14495

 [Run BLAST with](#)

 [Run BLAST with](#)

General notes

The Life Science industry has been in the grips of a reproducibility crisis for a number of years. Abcam is leading the way in addressing this with our range of recombinant monoclonal antibodies and knockout edited cell lines for gold-standard validation. Please check that this product meets your needs before purchasing.

If you have any questions, special requirements or concerns, please send us an inquiry and/or contact our Support team ahead of purchase. Recommended alternatives for this product can be found below, along with publications, customer reviews and Q&As

Properties

Form	Liquid
Storage instructions	Shipped at 4°C. Store at +4°C short term (1-2 weeks). Upon delivery aliquot. Store at -20°C long term. Avoid freeze / thaw cycle.
Storage buffer	pH: 7.40 Preservative: 0.02% Proclin 300 Constituents: 50% Glycerol (glycerin, glycerine), 1% BSA, 48.98% TBS, 1X
Purity	Protein A purified
Clonality	Polyclonal

Isotype

IgG

Applications

The Abpromise guarantee

Our **Abpromise guarantee** covers the use of ab203216 in the following tested applications.

The application notes include recommended starting dilutions; optimal dilutions/concentrations should be determined by the end user.

Application	Abreviews	Notes
IHC-P		1/100 - 1/500. When using a fluorescent probe the recommended dilution is 1/50 – 1/200

Target

Function

Catalyzes the conversion of phosphatidic acid (PA) to diacylglycerol (DG). In addition it hydrolyzes lysophosphatidic acid (LPA), ceramide-1-phosphate (C-1-P) and sphingosine-1-phosphate (S-1-P). The relative catalytic efficiency is LPA = PA > C-1-P > S-1-P. May be involved in cell adhesion and in cell-cell interactions.

Tissue specificity

Ubiquitously expressed. Highly expressed in heart and placenta.

Sequence similarities

Belongs to the PA-phosphatase related phosphoesterase family.

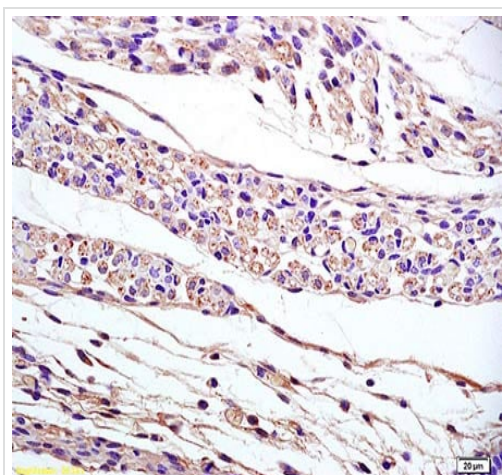
Post-translational modifications

N-glycosylated. Contains high-mannose oligosaccharides.

Cellular localization

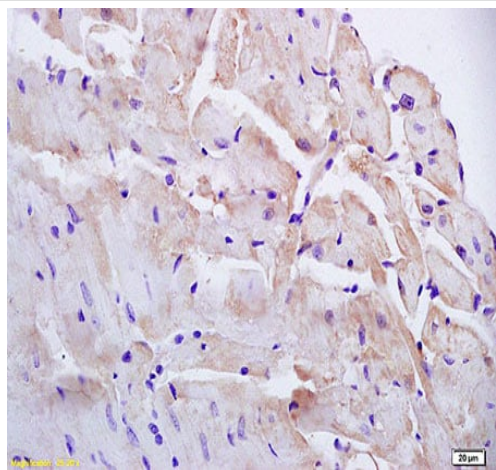
Golgi apparatus > trans-Golgi network membrane. Cell membrane.

Images



Immunohistochemical analysis of formalin-fixed, paraffin-embedded mouse embryo, labeling Phosphatidic acid phosphatase type 2B with ab203216 at 1/200 dilution followed by conjugation to the secondary antibody and DAB staining

Immunohistochemistry (Formalin/PFA-fixed paraffin-embedded sections) - Anti-Phosphatidic acid phosphatase type 2B antibody (ab203216)



Immunohistochemistry (Formalin/PFA-fixed paraffin-embedded sections) - Anti-Phosphatidic acid phosphatase type 2B antibody (ab203216)

Immunohistochemical analysis of formalin-fixed, paraffin-embedded mouse heart tissue, labeling Phosphatidic acid phosphatase type 2B with ab203216 at 1/200 dilution followed by conjugation to the secondary antibody and DAB staining.

Please note: All products are "FOR RESEARCH USE ONLY. NOT FOR USE IN DIAGNOSTIC PROCEDURES"

Our Abpromise to you: Quality guaranteed and expert technical support

- Replacement or refund for products not performing as stated on the datasheet
- Valid for 12 months from date of delivery
- Response to your inquiry within 24 hours
- We provide support in Chinese, English, French, German, Japanese and Spanish
- Extensive multi-media technical resources to help you
- We investigate all quality concerns to ensure our products perform to the highest standards

If the product does not perform as described on this datasheet, we will offer a refund or replacement. For full details of the Abpromise, please visit <https://www.abcam.com/abpromise> or contact our technical team.

Terms and conditions

- Guarantee only valid for products bought direct from Abcam or one of our authorized distributors