




Product datasheet

Anti-Phospholipase A2 XII/PLA2G12A antibody [3H2C11] ab201944

4 Images

Overview

Product name	Anti-Phospholipase A2 XII/PLA2G12A antibody [3H2C11]
Description	Mouse monoclonal [3H2C11] to Phospholipase A2 XII/PLA2G12A
Host species	Mouse
Tested applications	Suitable for: Flow Cyt, IHC-P, WB
Species reactivity	Reacts with: Human Predicted to work with: Mouse 
Immunogen	Recombinant full length protein corresponding to Human Phospholipase A2 XII/PLA2G12A aa 1 to the C-terminus. (Purified from E.coli). Database link: Q9BZM1  Run BLAST with  Run BLAST with
Positive control	Human Phospholipase A2 XII/PLA2G12A (aa21-189) recombinant protein; Phospholipase A2 XII/PLA2G12A (aa21-189)-hlgGfc transfected HEK293 cell lysate; HeLa cells; Human liver cancer tissue.
General notes	<p>The Life Science industry has been in the grips of a reproducibility crisis for a number of years. Abcam is leading the way in addressing this with our range of recombinant monoclonal antibodies and knockout edited cell lines for gold-standard validation. Please check that this product meets your needs before purchasing.</p> <p>If you have any questions, special requirements or concerns, please send us an inquiry and/or contact our Support team ahead of purchase. Recommended alternatives for this product can be found below, along with publications, customer reviews and Q&As</p>

Properties

Form	Liquid
Storage instructions	Shipped at 4°C. Store at +4°C short term (1-2 weeks). Upon delivery aliquot. Store at -20°C long term. Avoid freeze / thaw cycle.
Storage buffer	Preservative: 0.05% Sodium azide Constituent: 99% PBS
Purity	Protein G purified

Purification notes	Purified from tissue culture supernatant.
Clonality	Monoclonal
Clone number	3H2C11
Isotype	IgG1

Applications

The Abpromise guarantee Our **Abpromise guarantee** covers the use of ab201944 in the following tested applications.

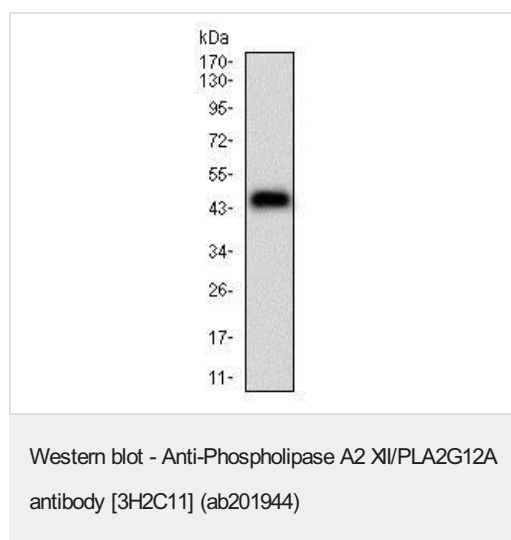
The application notes include recommended starting dilutions; optimal dilutions/concentrations should be determined by the end user.

Application	Abreviews	Notes
Flow Cyt		1/200 - 1/400. ab170190 - Mouse monoclonal IgG1, is suitable for use as an isotype control with this antibody.
IHC-P		1/200 - 1/1000.
WB		1/500 - 1/2000. Predicted molecular weight: 21 kDa.

Target

Function	PA2 catalyzes the calcium-dependent hydrolysis of the 2-acyl groups in 3-sn-phosphoglycerides. Does not exhibit detectable activity toward sn-2-arachidonoyl- or linoleoyl-phosphatidylcholine or -phosphatidylethanolamine.
Tissue specificity	Abundantly expressed in heart, skeletal muscle, kidney, liver and pancreas.
Sequence similarities	Belongs to the phospholipase A2 family.
Cellular localization	Secreted. Cytoplasm.

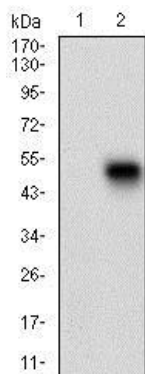
Images



Anti-Phospholipase A2 XII/PLA2G12A antibody [3H2C11] (ab201944) at 1/500 dilution + Human Phospholipase A2 XII/PLA2G12A (aa21-189) recombinant protein

Predicted band size: 21 kDa

Expected MWt is 44.5 kDa.



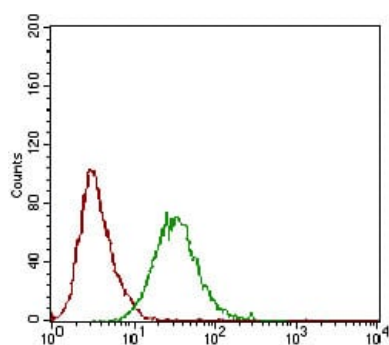
Western blot - Anti-Phospholipase A2 XII/PLA2G12A antibody [3H2C11] (ab201944)

All lanes : Anti-Phospholipase A2 XII/PLA2G12A antibody [3H2C11] (ab201944) at 1/500 dilution

Lane 1 : HEK293 cell lysate

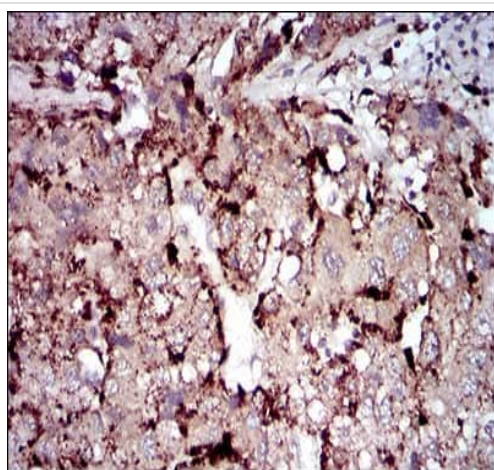
Lane 2 : Phospholipase A2 XII/PLA2G12A (aa21-189)-hlgGFc transfected HEK293 cell lysate

Predicted band size: 21 kDa



Flow Cytometry - Anti-Phospholipase A2 XII/PLA2G12A antibody [3H2C11] (ab201944)

Flow cytometric analysis of HeLa cells labeling Phospholipase A2 XII/PLA2G12A with ab201944 at 1/200 dilution (green) compared to a negative control (red).



Immunohistochemistry (Formalin/PFA-fixed paraffin-embedded sections) - Anti-Phospholipase A2 XII/PLA2G12A antibody [3H2C11] (ab201944)

Immunohistochemical analysis of paraffin-embedded Human liver cancer tissue labeling Phospholipase A2 XII/PLA2G12A with ab201944 at 1/200 dilution, with DAB staining.

Please note: All products are "FOR RESEARCH USE ONLY. NOT FOR USE IN DIAGNOSTIC PROCEDURES"

Our Abpromise to you: Quality guaranteed and expert technical support

- Replacement or refund for products not performing as stated on the datasheet
- Valid for 12 months from date of delivery
- Response to your inquiry within 24 hours

- We provide support in Chinese, English, French, German, Japanese and Spanish
- Extensive multi-media technical resources to help you
- We investigate all quality concerns to ensure our products perform to the highest standards

If the product does not perform as described on this datasheet, we will offer a refund or replacement. For full details of the Abpromise, please visit <https://www.abcam.com/abpromise> or contact our technical team.

Terms and conditions

- Guarantee only valid for products bought direct from Abcam or one of our authorized distributors