

Anti-PICH antibody ab88560

[2 References](#) [2 Images](#)

Overview

Product name	Anti-PICH antibody
Description	Mouse polyclonal to PICH
Host species	Mouse
Tested applications	Suitable for: WB
Species reactivity	Reacts with: Human
Immunogen	Recombinant full length protein within Human PICH. The exact immunogen sequence used to generate this antibody is proprietary information. If additional detail on the immunogen is needed to determine the suitability of the antibody for your needs, please contact our Scientific Support team to discuss your requirements. (AAH08808.1)
Positive control	Hela cell lysate, PICH transfected 293T cell lysate.
General notes	<p>The Life Science industry has been in the grips of a reproducibility crisis for a number of years. Abcam is leading the way in addressing this with our range of recombinant monoclonal antibodies and knockout edited cell lines for gold-standard validation. Please check that this product meets your needs before purchasing.</p> <p>If you have any questions, special requirements or concerns, please send us an inquiry and/or contact our Support team ahead of purchase. Recommended alternatives for this product can be found below, along with publications, customer reviews and Q&As</p>

Properties

Form	Liquid
Storage instructions	Shipped at 4°C. Upon delivery aliquot and store at -20°C or -80°C. Avoid repeated freeze / thaw cycles.
Storage buffer	pH: 7.40 Constituent: 100% PBS
Purity	Protein A purified
Clonality	Polyclonal
Isotype	IgG

Applications

The Abpromise guarantee

Our **Abpromise guarantee** covers the use of ab88560 in the following tested applications.

The application notes include recommended starting dilutions; optimal dilutions/concentrations should be determined by the end user.

Application	Abreviews	Notes
WB		Use a concentration of 1 µg/ml. Predicted molecular weight: 141 kDa.

Target

Function

DNA helicase that acts as an essential component of the spindle assembly checkpoint. Contributes to the mitotic checkpoint by recruiting MAD2 to kinetochores and monitoring tension on centromeric chromatin. Acts as a tension sensor that associates with catenated DNA which is stretched under tension until it is resolved during anaphase.

Sequence similarities

Belongs to the SNF2/RAD54 helicase family.
Contains 1 helicase ATP-binding domain.
Contains 1 helicase C-terminal domain.
Contains 2 TPR repeats.

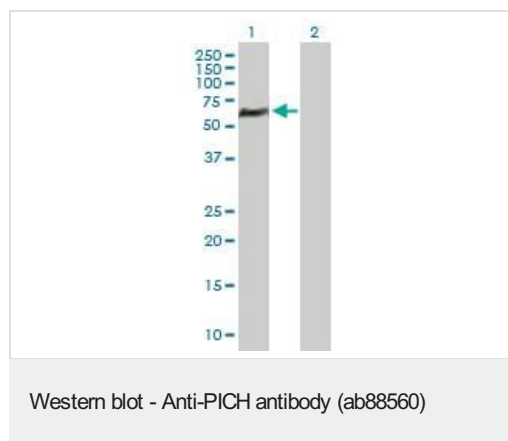
Post-translational modifications

Phosphorylation by PLK1 prevents the association with chromosome arms and restricts its localization to the kinetochore-centromere region.

Cellular localization

Chromosome > centromere. Chromosome > centromere > kinetochore. Localizes to kinetochores, inner centromeres and thin threads connecting separating chromosomes even during anaphase. In prometaphase cells, it mostly concentrates in between kinetochores. In metaphase, it localizes to numerous thin threads that stretch between sister kinetochores of the aligned chromosomes and are composed of catenated centromeric DNA. Evolution from inner centromeres to thin threads takes place in response to tension. Resolution of thin threads requires topoisomerase 2-alpha (TOP2A) after anaphase onset.

Images



All lanes : Anti-PICH antibody (ab88560) at 1 µg/ml

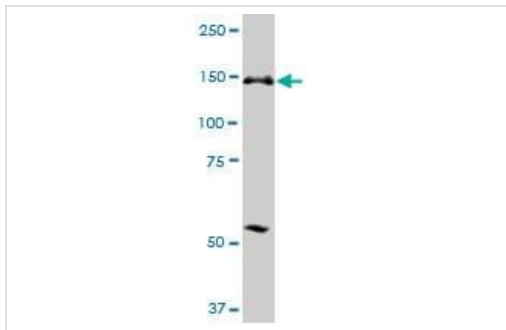
Lane 1 : PICH transfected 293T cell lysate

Lane 2 : Non transfected 293T cell lysate

Lysates/proteins at 25 µg per lane.

Predicted band size: 141 kDa

Observed band size: 60 kDa



Western blot - Anti-PICH antibody (ab88560)

Anti-PICH antibody (ab88560) at 1 µg/ml + HeLa cell lysate at 50 µg

Predicted band size: 141 kDa

Observed band size: 141 kDa

Additional bands at: 57 kDa. We are unsure as to the identity of these extra bands.

Please note: All products are "FOR RESEARCH USE ONLY. NOT FOR USE IN DIAGNOSTIC PROCEDURES"

Our Abpromise to you: Quality guaranteed and expert technical support

- Replacement or refund for products not performing as stated on the datasheet
- Valid for 12 months from date of delivery
- Response to your inquiry within 24 hours
- We provide support in Chinese, English, French, German, Japanese and Spanish
- Extensive multi-media technical resources to help you
- We investigate all quality concerns to ensure our products perform to the highest standards

If the product does not perform as described on this datasheet, we will offer a refund or replacement. For full details of the Abpromise, please visit <https://www.abcam.com/abpromise> or contact our technical team.

Terms and conditions

- Guarantee only valid for products bought direct from Abcam or one of our authorized distributors