


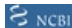


## Product datasheet

### Anti-PICK1 antibody ab3420

★★★★★ [6 Abreviews](#) [17 References](#) [4 Images](#)

#### Overview

<b>Product name</b>	Anti-PICK1 antibody
<b>Description</b>	Rabbit polyclonal to PICK1
<b>Host species</b>	Rabbit
<b>Specificity</b>	Detects protein interacting with Protein Kinase C (PICK 1). By Western blot, this antibody detects an ~52 kDa protein representing PICK 1 from AtT20 cell extract. Immunocytochemical staining of CV1 cells transfected with PICK 1 results in a diffuse staining pattern when expressed alone and coclustered when coexpressed with mGluR7.
<b>Tested applications</b>	<b>Suitable for:</b> WB, ICC/IF
<b>Species reactivity</b>	<b>Reacts with:</b> Mouse, Rat, Human <b>Predicted to work with:</b> Cow, Cynomolgus monkey 
<b>Immunogen</b>	Synthetic peptide corresponding to Mouse PICK1 aa 1-100.  <a href="#">Run BLAST with</a>  <a href="#">Run BLAST with</a> 
<b>General notes</b>	<p>The Life Science industry has been in the grips of a reproducibility crisis for a number of years. Abcam is leading the way in addressing this with our range of recombinant monoclonal antibodies and knockout edited cell lines for gold-standard validation. Please check that this product meets your needs before purchasing.</p> <p>If you have any questions, special requirements or concerns, please send us an inquiry and/or contact our Support team ahead of purchase. Recommended alternatives for this product can be found below, along with publications, customer reviews and Q&amp;As</p>

#### Properties

<b>Form</b>	Liquid
<b>Storage instructions</b>	Shipped at 4°C. Store at +4°C short term (1-2 weeks). Upon delivery aliquot. Store at -20°C or -80°C. Avoid freeze / thaw cycle.
<b>Storage buffer</b>	Constituents: 0.1% BSA, 99% PBS
<b>Purity</b>	Immunogen affinity purified
<b>Clonality</b>	Polyclonal
<b>Isotype</b>	IgG

## Applications

### The Abpromise guarantee

Our **Abpromise guarantee** covers the use of ab3420 in the following tested applications.

The application notes include recommended starting dilutions; optimal dilutions/concentrations should be determined by the end user.

Application	Abreviews	Notes
WB	★★★★★ (3)	Use a concentration of 2 µg/ml. Detects a band of approximately 52 kDa.
ICC/IF	★★★★★ (3)	Use at an assay dependent concentration.

## Target

### Function

Probable adapter protein that bind to and organize the subcellular localization of a variety of membrane proteins containing some PDZ recognition sequence. Involved in the clustering of various receptors, possibly by acting at the receptor internalization level. Plays a role in synaptic plasticity by regulating the trafficking and internalization of AMPA receptors. May be regulated upon PRKCA activation. May regulate heteromeric ACCN3/ACCN2 channel.

### Tissue specificity

Ubiquitous.

### Sequence similarities

Contains 1 AH domain.  
Contains 1 PDZ (DHR) domain.

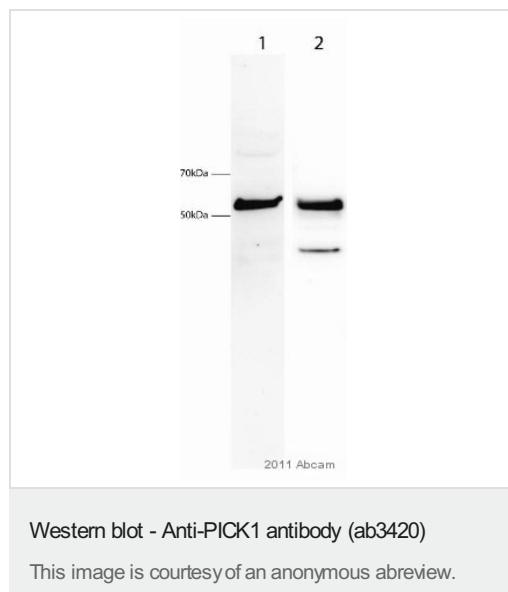
### Post-translational modifications

Phosphorylation at Thr-82 appears to inhibit the interaction with AMPA receptors.

### Cellular localization

Cytoplasm > perinuclear region. Cell junction > synapse. Also present at excitatory synapses.

## Images



**Lane 1 :** An myc antibody in PBST for 16 hours at 4°C

**Lane 2 :** Anti-PICK1 antibody (ab3420) at 1/500 dilution (in PBST for 16 hours at 4°C)

**All lanes :** Transfected CHO cells expressing human Pick1 tagged with myc

Lysates/proteins at 20 µg per lane.

### Secondary

**Lane 2 :** An HRP-conjugated goat anti-rabbit IgG polyclonal at 1/10000 dilution

Developed using the ECL technique.

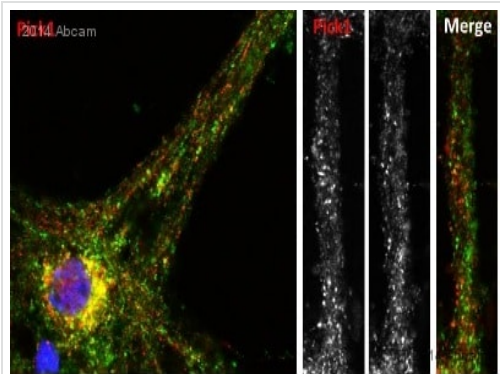
Performed under reducing conditions.

**Observed band size:** ~52 kDa

**Additional bands at:** ~40 kDa. We are unsure as to the identity of these extra bands.

**Exposure time:** 2 minutes

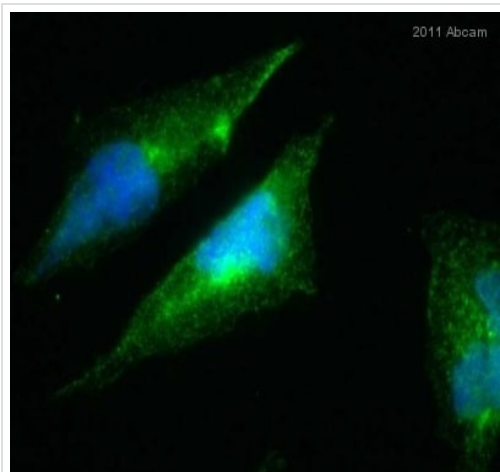
**Blocking Step:** 5% Milk for 1 hour at 20°C



Immunocytochemistry/ Immunofluorescence - Anti-PICK1 antibody (ab3420)

This image is courtesy of an anonymous abreview.

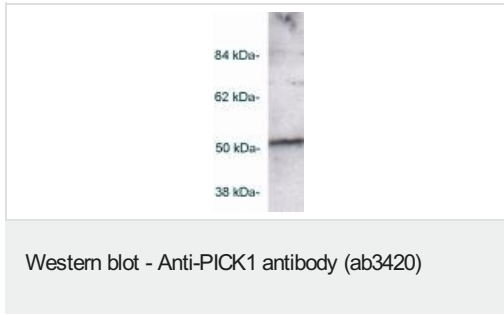
ab3420 staining PICK1 in mouse Hippocampal neurons by Immunocytochemistry/ Immunofluorescence. Cells were fixed in paraformaldehyde and permeabilized in 0.1% saponin/PBS prior to blocking in 3% BSA for 1 hour at room temperature. The primary antibody was diluted 1/300 in 3% BSA, 0.1% saponin /PBS and incubated with the sample for 18 hours at 4 °C. The secondary antibody was Alexa Fluor® 455-conjugated Donkey anti-Rabbit polyclonal, diluted 1/1000.



Immunocytochemistry/ Immunofluorescence - Anti-PICK1 antibody (ab3420)

This image is courtesy of an anonymous abreview.

ab3420 staining PICK1 in CHO cells stably transfected with Human PICK1 by Immunocytochemistry/ Immunofluorescence. Cells were fixed in paraformaldehyde and permeabilized in 0.5% Triton X-100 prior to blocking in 10% serum for 1 hour at room temperature. The primary antibody was diluted 1/1000 in PBS, 0.5% Triton, 10% FCS and incubated with the sample for 2 hours at °C. The secondary antibody was Alexa Fluor® 488-conjugated Goat anti-Rabbit polyclonal, diluted 1/500.



Western blot of PICK1 on AtT20 cell lysate using ab3420.

**Please note:** All products are "FOR RESEARCH USE ONLY. NOT FOR USE IN DIAGNOSTIC PROCEDURES"

### Our Abpromise to you: Quality guaranteed and expert technical support

---

- Replacement or refund for products not performing as stated on the datasheet
- Valid for 12 months from date of delivery
- Response to your inquiry within 24 hours
- We provide support in Chinese, English, French, German, Japanese and Spanish
- Extensive multi-media technical resources to help you
- We investigate all quality concerns to ensure our products perform to the highest standards

If the product does not perform as described on this datasheet, we will offer a refund or replacement. For full details of the Abpromise, please visit <https://www.abcam.com/abpromise> or contact our technical team.

### Terms and conditions

---

- Guarantee only valid for products bought direct from Abcam or one of our authorized distributors