

## Product datasheet

# Anti-PINCH 1 + PINCH 2 antibody [EP1943Y] ab76112

Recombinant RabMAb

[1 References](#) [3 Images](#)

### Overview

<b>Product name</b>	Anti-PINCH 1 + PINCH 2 antibody [EP1943Y]
<b>Description</b>	Rabbit monoclonal [EP1943Y] to PINCH 1 + PINCH 2
<b>Host species</b>	Rabbit
<b>Specificity</b>	The immunogen used for this product shares 73% homology with PINCH 2. Cross-reactivity with this protein has not been confirmed experimentally.
<b>Tested applications</b>	<b>Suitable for:</b> WB
<b>Species reactivity</b>	<b>Reacts with:</b> Mouse, Rat, Human
<b>Immunogen</b>	Synthetic peptide. This information is proprietary to Abcam and/or its suppliers.
<b>Positive control</b>	WB: His-tagged Human full length recombinant LIMS1 and LIMS2 proteins, HeLa, Jurkat, HEK-293, and Mouse and Rat kidney lysate.
<b>General notes</b>	<p>This product has switched from a hybridoma to recombinant production method on 7th September 2023.</p> <p>This product is a recombinant monoclonal antibody, which offers several advantages including:</p> <ul style="list-style-type: none"> <li>- High batch-to-batch consistency and reproducibility</li> <li>- Improved sensitivity and specificity</li> <li>- Long-term security of supply</li> <li>- Animal-free production</li> </ul> <p>For more information <a href="#">see here</a>.</p> <p>Our RabMAb<sup>®</sup> technology is a patented hybridoma-based technology for making rabbit monoclonal antibodies. For details on our patents, please refer to <a href="#">RabMAb<sup>®</sup> patents</a>.</p>

### Properties

<b>Form</b>	Liquid
<b>Storage instructions</b>	Shipped at 4°C. Upon delivery aliquot and store at -20°C. Avoid freeze / thaw cycles.
<b>Storage buffer</b>	<p>pH: 7.20</p> <p>Preservative: 0.01% Sodium azide</p> <p>Constituents: 0.05% BSA, 40% Glycerol (glycerin, glycerine), 59% PBS</p>
<b>Purity</b>	Protein A purified

<b>Clonality</b>	Monoclonal
<b>Clone number</b>	EP1943Y
<b>Isotype</b>	IgG

## Applications

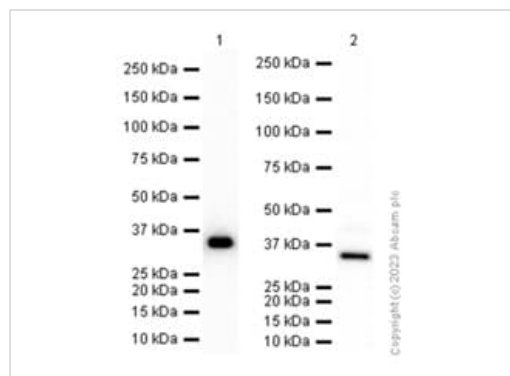
**The Abpromise guarantee** Our **Abpromise guarantee** covers the use of ab76112 in the following tested applications. The application notes include recommended starting dilutions; optimal dilutions/concentrations should be determined by the end user.

Application	Abreviews	Notes
WB		1/1000 - 1/5000.

## Target

**Cellular localization** PINCH 1: Cell junction > focal adhesion. Cell membrane. PINCH-2: Nucleus. Cell junction > focal adhesion. Cell membrane.

## Images



Western blot - Anti-PINCH 1 + PINCH 2 antibody [EP1943Y] (ab76112)

**All lanes** : Anti-PINCH 1 + PINCH 2 antibody [EP1943Y] (ab76112) at 1/5000 dilution

**Lane 1** : HeLa (Human cervix adenocarcinoma epithelial cell) whole lysate

**Lane 2** : Mouse kidney lysate

Lysates/proteins at 15 µg per lane.

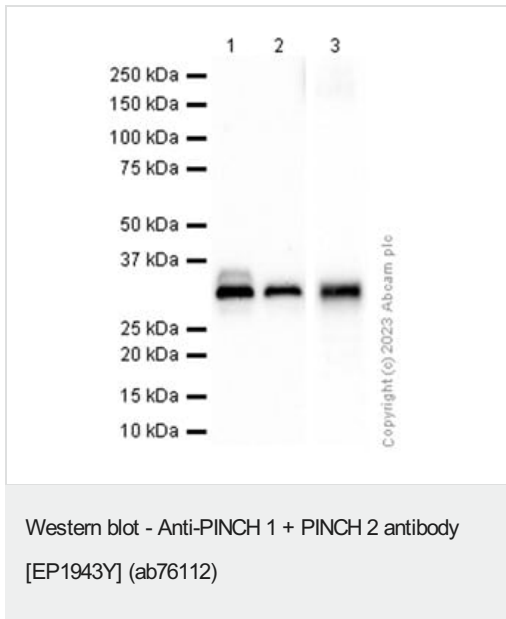
### Secondary

**All lanes** : Goat Anti-Rabbit IgG H&L (HRP) (**ab97051**) at 1/20000 dilution

Performed under reducing conditions.

**Observed band size:** 34 kDa

Blocking and diluting buffer and concentration: 5% NFDN/TBST.



**All lanes :** Anti-PINCH 1 + PINCH 2 antibody [EP1943Y] (ab76112) at 1/1000 dilution

**Lane 1 :** Jurkat (Human T cell leukemia T lymphocyte) whole lysate

**Lane 2 :** HEK-293 (Human embryonic kidney epithelial cell) whole lysate

**Lane 3 :** Rat kidney lysate

Lysates/proteins at 20 µg per lane.

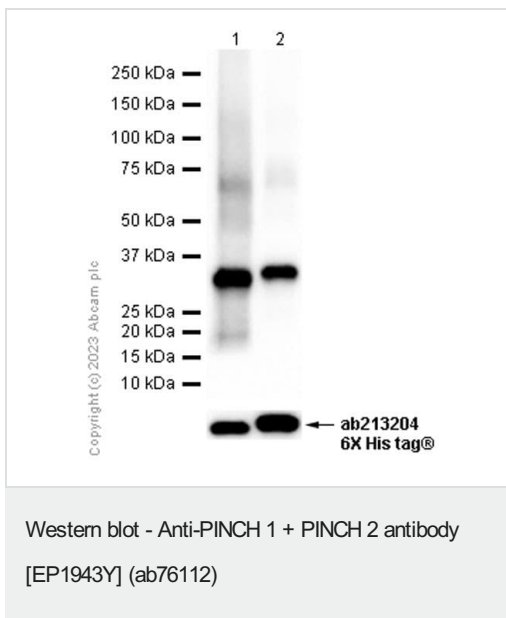
### Secondary

**All lanes :** Goat Anti-Rabbit IgG H&L (HRP) ([ab97051](#)) at 1/20000 dilution

Performed under reducing conditions.

**Observed band size:** 34 kDa

Blocking and diluting buffer and concentration: 5% NFDm/TBST.



**All lanes :** Anti-PINCH 1 + PINCH 2 antibody [EP1943Y] (ab76112) at 1/1000 dilution

**Lane 1 :** His-tagged Human full length recombinant LIMS1 protein, 20 ng

**Lane 2 :** His-tagged Human full length recombinant LIMS2 protein, 20 ng

### Secondary

**All lanes :** Goat Anti-Rabbit IgG H&L (HRP) ([ab97051](#)) at 1/20000 dilution

**Observed band size:** 34 and 37 kDa

**Exposure time:** 3 seconds

**Blocking buffer and concentration:** 5% NFDm/TBST.

**Diluting buffer and concentration:** 5% NFDm/TBST.

**Please note:** All products are "FOR RESEARCH USE ONLY. NOT FOR USE IN DIAGNOSTIC PROCEDURES"

### **Our Abpromise to you: Quality guaranteed and expert technical support**

---

- Replacement or refund for products not performing as stated on the datasheet
- Valid for 12 months from date of delivery
- Response to your inquiry within 24 hours
- We provide support in Chinese, English, French, German, Japanese and Spanish
- Extensive multi-media technical resources to help you
- We investigate all quality concerns to ensure our products perform to the highest standards

If the product does not perform as described on this datasheet, we will offer a refund or replacement. For full details of the Abpromise, please visit <https://www.abcam.com/abpromise> or contact our technical team.

### **Terms and conditions**

---

- Guarantee only valid for products bought direct from Abcam or one of our authorized distributors