




Product datasheet

Anti-Pit1 antibody [2C11] ab10623

[4 References](#) [1 Image](#)

Overview

Product name	Anti-Pit1 antibody [2C11]
Description	Mouse monoclonal [2C11] to Pit1
Host species	Mouse
Tested applications	Suitable for: WB
Species reactivity	Reacts with: Rat Predicted to work with: Sheep, Cow, Human, Pig, Macaque monkey 
Immunogen	Recombinant fragment within Rat Pit1 aa 1-150. The exact immunogen sequence used to generate this antibody is proprietary information. If additional detail on the immunogen is needed to determine the suitability of the antibody for your needs, please contact our Scientific Support team to discuss your requirements.  Run BLAST with  Run BLAST with
General notes	<p>The Life Science industry has been in the grips of a reproducibility crisis for a number of years. Abcam is leading the way in addressing this with our range of recombinant monoclonal antibodies and knockout edited cell lines for gold-standard validation. Please check that this product meets your needs before purchasing.</p> <p>If you have any questions, special requirements or concerns, please send us an inquiry and/or contact our Support team ahead of purchase. Recommended alternatives for this product can be found below, along with publications, customer reviews and Q&As</p>

Properties

Form	Liquid
Storage instructions	Shipped at 4°C. Upon delivery aliquot and store at -20°C or -80°C. Avoid repeated freeze / thaw cycles.
Purity	Tissue culture supernatant
Clonality	Monoclonal
Clone number	2C11
Myeloma	NS1
Isotype	IgG1
Light chain type	kappa

Applications

The Abpromise guarantee

Our **Abpromise guarantee** covers the use of ab10623 in the following tested applications.

The application notes include recommended starting dilutions; optimal dilutions/concentrations should be determined by the end user.

Application	Abreviews	Notes
WB		1/50. Detects a band of approximately 31 kDa (predicted molecular weight: 33 kDa).

Target

Function

Transcription factor involved in the specification of the lactotrope, somatotrope, and thyrotrope phenotypes in the developing anterior pituitary. Activates growth hormone and prolactin genes. Specifically binds to the consensus sequence 5'-TAAAT-3'.

Involvement in disease

Defects in POU1F1 are the cause of pituitary hormone deficiency combined type 1 (CPHD1) [MIM:613038]. CPHD is characterized by impaired production of growth hormone (GH) and one or more of the other five anterior pituitary hormones.

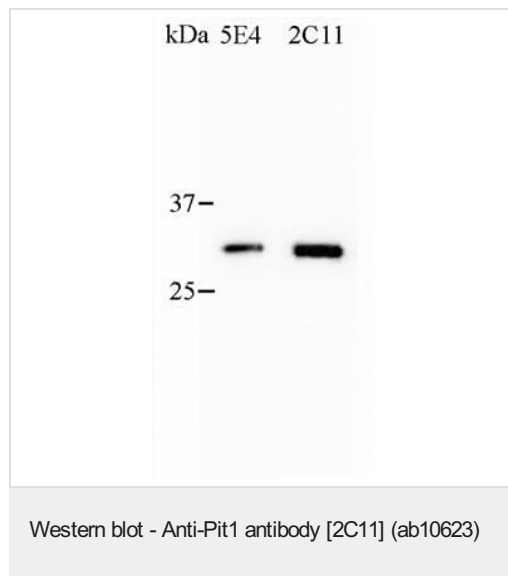
Sequence similarities

Belongs to the POU transcription factor family. Class-1 subfamily.
Contains 1 homeobox DNA-binding domain.
Contains 1 POU-specific domain.

Cellular localization

Nucleus.

Images



At 1:40 dilution the western was very good on GH3 nuclear lysate which has an abundant expression of Pit1.

At 1:40 dilution the western was very good on GH3 nuclear lysate which has an abundant expression of Pit1.

Please note: All products are "FOR RESEARCH USE ONLY. NOT FOR USE IN DIAGNOSTIC PROCEDURES"

Our Abpromise to you: Quality guaranteed and expert technical support

- Replacement or refund for products not performing as stated on the datasheet

- Valid for 12 months from date of delivery
- Response to your inquiry within 24 hours
- We provide support in Chinese, English, French, German, Japanese and Spanish
- Extensive multi-media technical resources to help you
- We investigate all quality concerns to ensure our products perform to the highest standards

If the product does not perform as described on this datasheet, we will offer a refund or replacement. For full details of the Abpromise, please visit <https://www.abcam.com/abpromise> or contact our technical team.

Terms and conditions

- Guarantee only valid for products bought direct from Abcam or one of our authorized distributors