

### Anti-PITPNC1 antibody ab68013

1 Image

#### Overview

<b>Product name</b>	Anti-PITPNC1 antibody
<b>Description</b>	Mouse polyclonal to PITPNC1
<b>Host species</b>	Mouse
<b>Specificity</b>	This antibody is reactive against mammalian transfected lysate.
<b>Tested applications</b>	<b>Suitable for:</b> WB
<b>Species reactivity</b>	<b>Reacts with:</b> Human
<b>Immunogen</b>	Recombinant full length protein within Human PITPNC1. The exact immunogen sequence used to generate this antibody is proprietary information. If additional detail on the immunogen is needed to determine the suitability of the antibody for your needs, please <b>contact</b> our Scientific Support team to discuss your requirements.
<b>Positive control</b>	PITPNC1 transfected 293T cell lysate
<b>General notes</b>	<p>The Life Science industry has been in the grips of a reproducibility crisis for a number of years. Abcam is leading the way in addressing this with our range of recombinant monoclonal antibodies and knockout edited cell lines for gold-standard validation. Please check that this product meets your needs before purchasing.</p> <p>If you have any questions, special requirements or concerns, please send us an inquiry and/or contact our Support team ahead of purchase. Recommended alternatives for this product can be found below, along with publications, customer reviews and Q&amp;As</p>

#### Properties

<b>Form</b>	Liquid
<b>Storage instructions</b>	Shipped at 4°C. Upon delivery aliquot and store at -20°C or -80°C. Avoid repeated freeze / thaw cycles.
<b>Storage buffer</b>	pH: 7.40 Constituent: PBS
<b>Purity</b>	Protein A purified
<b>Clonality</b>	Polyclonal
<b>Isotype</b>	IgG

## Applications

### The Abpromise guarantee

Our **Abpromise guarantee** covers the use of ab68013 in the following tested applications.

The application notes include recommended starting dilutions; optimal dilutions/concentrations should be determined by the end user.

Application	Abreviews	Notes
WB		1/500 - 1/1000. Detects a band of approximately 32 kDa (predicted molecular weight: 38 kDa).

## Target

### Function

Phosphatidylinositol transfer proteins mediate the monomeric transport of lipids by shielding a lipid from the aqueous environment and binding the lipid in a hydrophobic cavity. Able to transfer phosphatidylinositol in vitro.

### Tissue specificity

Ubiquitously expressed.

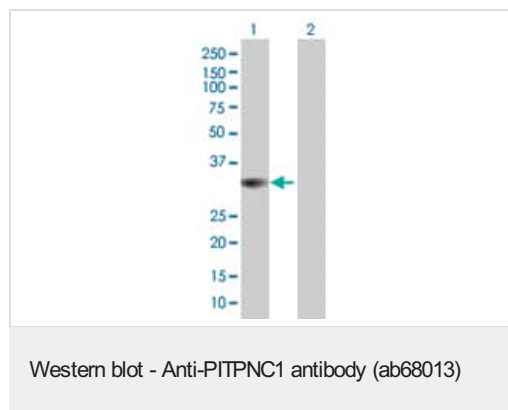
### Sequence similarities

Belongs to the PtdIns transfer protein family. PI transfer class IIB subfamily.

### Cellular localization

Cytoplasm.

## Images



**All lanes :** Anti-PITPNC1 antibody (ab68013) at 1/500 dilution

**Lane 1 :** PITPNC1 transfected 293T cell lysate

**Lane 2 :** Non-transfected 293T cell lysate

Lysates/proteins at 25 µg per lane.

### Secondary

**All lanes :** Goat Anti-Mouse IgG (H&L)-HRP Conjugate at 1/2500 dilution

**Predicted band size:** 38 kDa

**Observed band size:** 32 kDa

**Please note:** All products are "FOR RESEARCH USE ONLY. NOT FOR USE IN DIAGNOSTIC PROCEDURES"

## Our Abpromise to you: Quality guaranteed and expert technical support

- Replacement or refund for products not performing as stated on the datasheet
- Valid for 12 months from date of delivery
- Response to your inquiry within 24 hours

- We provide support in Chinese, English, French, German, Japanese and Spanish
- Extensive multi-media technical resources to help you
- We investigate all quality concerns to ensure our products perform to the highest standards

If the product does not perform as described on this datasheet, we will offer a refund or replacement. For full details of the Abpromise, please visit <https://www.abcam.com/abpromise> or contact our technical team.

#### **Terms and conditions**

---

- Guarantee only valid for products bought direct from Abcam or one of our authorized distributors