


## Product datasheet

# Anti-PKA alpha + beta (catalytic subunits) (phospho T197) antibody ab59218

[2 References](#) [2 Images](#)

### Overview

<b>Product name</b>	Anti-PKA alpha + beta (catalytic subunits) (phospho T197) antibody
<b>Description</b>	Rabbit polyclonal to PKA alpha + beta (catalytic subunits) (phospho T197)
<b>Host species</b>	Rabbit
<b>Specificity</b>	ab59218 detects endogenous levels of PKA alpha + beta (catalytic subunit) only when phosphorylated at threonine 197.
<b>Tested applications</b>	<b>Suitable for:</b> IHC-P, WB
<b>Species reactivity</b>	<b>Reacts with:</b> Mouse, Human <b>Predicted to work with:</b> Rat 
<b>Immunogen</b>	Synthetic peptide corresponding to Human PKA alpha + beta (catalytic subunits) aa 150-250 (phospho T197). (T-W-TP-L-C). Database link: <a href="#">P17612</a>
<b>General notes</b>	<p>The Life Science industry has been in the grips of a reproducibility crisis for a number of years. Abcam is leading the way in addressing this with our range of recombinant monoclonal antibodies and knockout edited cell lines for gold-standard validation. Please check that this product meets your needs before purchasing.</p> <p>If you have any questions, special requirements or concerns, please send us an inquiry and/or contact our Support team ahead of purchase. Recommended alternatives for this product can be found below, along with publications, customer reviews and Q&amp;As</p>

### Properties

<b>Form</b>	Liquid
<b>Storage instructions</b>	Shipped at 4°C. Store at -20°C. Stable for 12 months at -20°C.
<b>Storage buffer</b>	<p>pH: 7.40</p> <p>Preservative: 0.02% Sodium azide</p> <p>Constituents: PBS, 50% Glycerol (glycerin, glycerine), 0.87% Sodium chloride</p> <p>Without Mg+2 and Ca+2</p>
<b>Purity</b>	Immunogen affinity purified

<b>Purification notes</b>	ab59218 was affinity-purified from rabbit antiserum by affinity-chromatography using epitope-specific phosphopeptide. The antibody against non-phosphopeptide was removed by chromatography using non-phosphopeptide corresponding to the phosphorylation site.
<b>Clonality</b>	Polyclonal
<b>Isotype</b>	IgG

## Applications

**The Abpromise guarantee** Our **Abpromise guarantee** covers the use of ab59218 in the following tested applications.

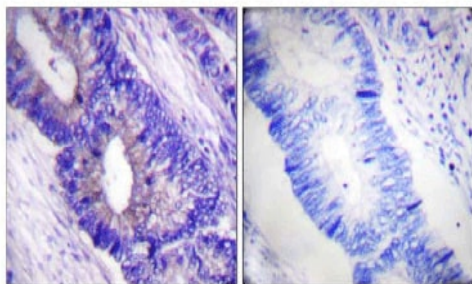
The application notes include recommended starting dilutions; optimal dilutions/concentrations should be determined by the end user.

Application	Abreviews	Notes
<b>IHC-P</b>		1/50 - 1/100.
<b>WB</b>		1/500 - 1/1000. Detects a band of approximately 41 kDa (predicted molecular weight: 41 kDa).

## Target

<b>Relevance</b>	PRKACA and PRKACB are members of the Ser/Thr protein kinase family and are a catalytic subunit of cAMP-dependent protein kinase. cAMP is a signaling molecule important for a variety of cellular functions. cAMP exerts its effects by activating the cAMP-dependent protein kinase, which transduces the signal through phosphorylation of different target proteins. The inactive kinase holoenzyme is a tetramer composed of two regulatory and two catalytic subunits. cAMP causes the dissociation of the inactive holoenzyme into a dimer of regulatory subunits bound to four cAMP and two free monomeric catalytic subunits.
<b>Cellular localization</b>	Cytoplasm. Nucleus. Note=Translocates into the nucleus (monomeric catalytic subunit). The inactive holoenzyme is found in the cytoplasm

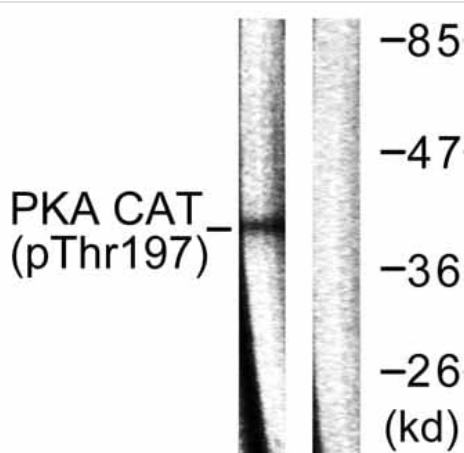
## Images



P-peptide - +

Immunohistochemistry (Formalin/PFA-fixed paraffin-embedded sections) - Anti-PKA alpha + beta (catalytic subunits) (phospho T197) antibody (ab59218)

ab59218 at 1/50 dilution staining PKA alpha + beta (catalytic subunit) in human colon carcinoma by Immunohistochemistry, Paraffin embedded tissue, in the absence (left) or presence (right) of the immunising peptide.



Western blot - Anti-PKA alpha + beta (catalytic subunits) (phospho T197) antibody (ab59218)

**All lanes :** Anti-PKA alpha + beta (catalytic subunits) (phospho T197) antibody (ab59218) at 1/500 dilution

**Lane 1 :** mouse brain cell extract

**Lane 2 :** mouse brain cell extract with immunising peptide

**Predicted band size:** 41 kDa

**Observed band size:** 41 kDa

**Please note:** All products are "FOR RESEARCH USE ONLY. NOT FOR USE IN DIAGNOSTIC PROCEDURES"

### Our Abpromise to you: Quality guaranteed and expert technical support

- Replacement or refund for products not performing as stated on the datasheet
- Valid for 12 months from date of delivery
- Response to your inquiry within 24 hours
- We provide support in Chinese, English, French, German, Japanese and Spanish
- Extensive multi-media technical resources to help you
- We investigate all quality concerns to ensure our products perform to the highest standards

If the product does not perform as described on this datasheet, we will offer a refund or replacement. For full details of the Abpromise, please visit <https://www.abcam.com/abpromise> or contact our technical team.

## Terms and conditions

---

- Guarantee only valid for products bought direct from Abcam or one of our authorized distributors