

Product datasheet

Anti-PKC epsilon (phospho S729) antibody ab63387

★★★★☆ [1 Abreviews](#) [24 References](#) [1 Image](#)

Overview

Product name	Anti-PKC epsilon (phospho S729) antibody
Description	Rabbit polyclonal to PKC epsilon (phospho S729)
Host species	Rabbit
Tested applications	Suitable for: WB
Species reactivity	Reacts with: Mouse, Human
Immunogen	Synthetic peptide corresponding to Human PKC epsilon aa 650-750 (phospho S729). Synthetic phosphopeptide from around the phosphorylation site of serine 729 (GFSPYF) of human PKC epsilon Database link: Q02156
Positive control	WB: HeLa cells treated with PMA (125ng/ml, 30mins).
General notes	<p>The Life Science industry has been in the grips of a reproducibility crisis for a number of years. Abcam is leading the way in addressing this with our range of recombinant monoclonal antibodies and knockout edited cell lines for gold-standard validation. Please check that this product meets your needs before purchasing.</p> <p>If you have any questions, special requirements or concerns, please send us an inquiry and/or contact our Support team ahead of purchase. Recommended alternatives for this product can be found below, along with publications, customer reviews and Q&As</p>

Properties

Form	Liquid
Storage instructions	Shipped at 4°C. Store at -20°C. Stable for 12 months at -20°C.
Storage buffer	pH: 7.40 Preservative: 0.02% Sodium azide Constituents: PBS, 50% Glycerol, 0.87% Sodium chloride Without Mg ²⁺ and Ca ²⁺
Purity	Immunogen affinity purified
Purification notes	The antibody was affinity-purified from rabbit antiserum by affinity-chromatography using epitope-specific phosphopeptide. The antibody against non-phosphopeptide was removed by chromatography using non-phosphopeptide corresponding to the phosphorylation site.

Clonality Polyclonal
Isotype IgG

Applications

The Abpromise guarantee Our **Abpromise guarantee** covers the use of ab63387 in the following tested applications. The application notes include recommended starting dilutions; optimal dilutions/concentrations should be determined by the end user.

Application	Abreviews	Notes
WB	★★★★☆ (1)	1/500 - 1/1000. Detects a band of approximately 84 kDa (predicted molecular weight: 84 kDa).

Target

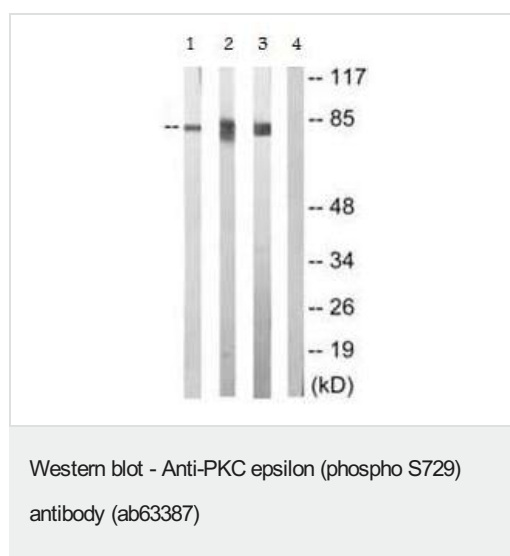
Function This is calcium-independent, phospholipid-dependent, serine- and threonine-specific enzyme. PKC is activated by diacylglycerol which in turn phosphorylates a range of cellular proteins. PKC also serves as the receptor for phorbol esters, a class of tumor promoters.

Sequence similarities Belongs to the protein kinase superfamily. AGC Ser/Thr protein kinase family. PKC subfamily. Contains 1 AGC-kinase C-terminal domain. Contains 1 C2 domain. Contains 2 phorbol-ester/DAG-type zinc fingers. Contains 1 protein kinase domain.

Domain The C1 domain, containing the phorbol ester/DAG-type region 1 (C1A) and 2 (C1B), is the diacylglycerol sensor and the C2 domain is a non-calcium binding domain.

Post-translational modifications Phosphorylation on Thr-566 by PDPK1 triggers autophosphorylation on Ser-729.

Images



All lanes : Anti-PKC epsilon (phospho S729) antibody (ab63387) at 1/500 dilution

Lane 1 : HeLa cells treated with PMA (125ng/ml, 30mins) at 30 μ g

Lane 2 : Jurkat cells treated with PMA (125ng/ml, 30mins) at 30 μ g

Lane 3 : NIH/3T3 cells treated with PMA (125ng/ml, 30mins) at 30 μ g

Lane 4 : NIH/3T3 cells treated with synthesized peptide (125ng/ml, 30mins) at 10 μ g

Predicted band size: 84 kDa

Observed band size: 84 kDa

Please note: All products are "FOR RESEARCH USE ONLY. NOT FOR USE IN DIAGNOSTIC PROCEDURES"

Our Abpromise to you: Quality guaranteed and expert technical support

- Replacement or refund for products not performing as stated on the datasheet
- Valid for 12 months from date of delivery
- Response to your inquiry within 24 hours

- We provide support in Chinese, English, French, German, Japanese and Spanish
- Extensive multi-media technical resources to help you
- We investigate all quality concerns to ensure our products perform to the highest standards

If the product does not perform as described on this datasheet, we will offer a refund or replacement. For full details of the Abpromise, please visit <https://www.abcam.com/abpromise> or contact our technical team.

Terms and conditions

- Guarantee only valid for products bought direct from Abcam or one of our authorized distributors