



Product datasheet

Anti-PKC mu/PKD (phospho S738) antibody ab131101

[1 References](#) [2 Images](#)

Overview

Product name	Anti-PKC mu/PKD (phospho S738) antibody
Description	Rabbit polyclonal to PKC mu/PKD (phospho S738)
Host species	Rabbit
Tested applications	Suitable for: WB, ICC/IF
Species reactivity	Reacts with: Human
Immunogen	Synthetic peptide corresponding to Human PKC mu/PKD (phospho S738) conjugated to keyhole limpet haemocyanin. Database link: Q15139
	 Run BLAST with  Run BLAST with
Positive control	MCF cell extract untreated and treated with PMA; HeLa cells
General notes	<p>The Life Science industry has been in the grips of a reproducibility crisis for a number of years. Abcam is leading the way in addressing this with our range of recombinant monoclonal antibodies and knockout edited cell lines for gold-standard validation. Please check that this product meets your needs before purchasing.</p> <p>If you have any questions, special requirements or concerns, please send us an inquiry and/or contact our Support team ahead of purchase. Recommended alternatives for this product can be found below, along with publications, customer reviews and Q&As</p>

Properties

Form	Liquid
Storage instructions	Shipped at 4°C. Store at -20°C. Stable for 12 months at -20°C.
Storage buffer	pH: 7.40 Preservative: 0.02% Sodium azide Constituents: 49% PBS, 0.88% Sodium chloride, 50% Glycerol (glycerin, glycerine)
	PBS without Mg ²⁺ and Ca ²⁺
Purity	Immunogen affinity purified
Purification notes	ab131101 was purified by affinity-chromatography using epitope-specific phosphopeptide. Non-phospho specific antibodies were removed by chromatography using non-phosphopeptide.
Clonality	Polyclonal

Isotype

IgG

Applications

The Abpromise guarantee

Our **Abpromise guarantee** covers the use of ab131101 in the following tested applications.

The application notes include recommended starting dilutions; optimal dilutions/concentrations should be determined by the end user.

Application	Abreviews	Notes
WB		1/500 - 1/1000. Detects a band of approximately 115 kDa (predicted molecular weight: 102 kDa).
ICC/IF		1/100 - 1/200.

Target

Function

Converts transient diacylglycerol (DAG) signals into prolonged physiological effects, downstream of PKC. Involved in resistance to oxidative stress through activation of NF-kappa-B.

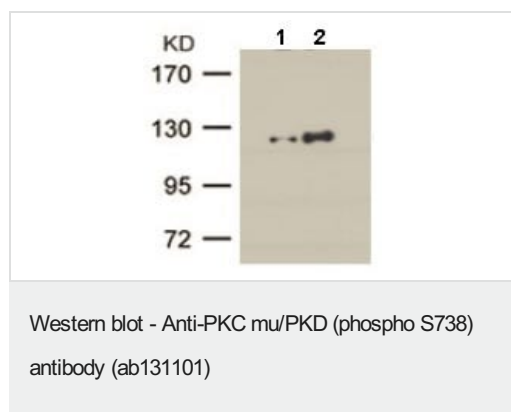
Sequence similarities

Belongs to the protein kinase superfamily. CAMK Ser/Thr protein kinase family. PKD subfamily. Contains 1 PH domain.
Contains 2 phorbol-ester/DAG-type zinc fingers.
Contains 1 protein kinase domain.

Cellular localization

Cytoplasm. Membrane. Translocation to the cell membrane is required for kinase activation.

Images



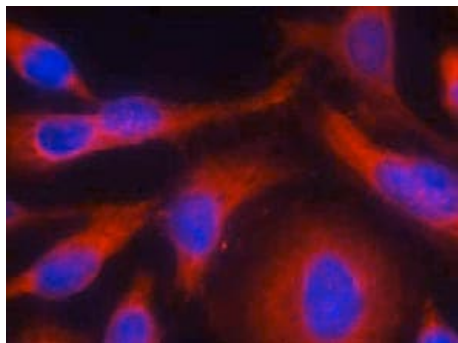
All lanes : Anti-PKC mu/PKD (phospho S738) antibody (ab131101) at 1/500 dilution

Lane 1 : MCF cell extract untreated

Lane 2 : MCF cell extract treated with PMA

Predicted band size: 102 kDa

Observed band size: 115 kDa



Immunofluorescence analysis of methanol-fixed HeLa cells labelling PKC mu/PKD (phospho S738) with ab131101 at 1/100 dilution.

Immunocytochemistry/ Immunofluorescence - Anti-PKC mu/PKD (phospho S738) antibody (ab131101)

Please note: All products are "FOR RESEARCH USE ONLY. NOT FOR USE IN DIAGNOSTIC PROCEDURES"

Our Abpromise to you: Quality guaranteed and expert technical support

- Replacement or refund for products not performing as stated on the datasheet
- Valid for 12 months from date of delivery
- Response to your inquiry within 24 hours
- We provide support in Chinese, English, French, German, Japanese and Spanish
- Extensive multi-media technical resources to help you
- We investigate all quality concerns to ensure our products perform to the highest standards

If the product does not perform as described on this datasheet, we will offer a refund or replacement. For full details of the Abpromise, please visit <https://www.abcam.com/abpromise> or contact our technical team.

Terms and conditions

- Guarantee only valid for products bought direct from Abcam or one of our authorized distributors