


## Product datasheet

### Anti-PKN2 antibody ab87812

[2 Images](#)

#### Overview

<b>Product name</b>	Anti-PKN2 antibody
<b>Description</b>	Rabbit polyclonal to PKN2
<b>Host species</b>	Rabbit
<b>Tested applications</b>	<b>Suitable for:</b> WB, IP
<b>Species reactivity</b>	<b>Reacts with:</b> Human <b>Predicted to work with:</b> Mouse, Rat, Horse, Chicken, Guinea pig, Cow, Dog, Pig, Chimpanzee, Rhesus monkey, Gorilla, Orangutan, Platypus 
<b>Immunogen</b>	Synthetic peptide corresponding to a region between residue 200 and 250 of human PKN2 (NP_006247.1).
<b>Positive control</b>	Whole cell lysates from HeLa and 293T cells.
<b>General notes</b>	<p>The Life Science industry has been in the grips of a reproducibility crisis for a number of years. Abcam is leading the way in addressing this with our range of recombinant monoclonal antibodies and knockout edited cell lines for gold-standard validation. Please check that this product meets your needs before purchasing.</p> <p>If you have any questions, special requirements or concerns, please send us an inquiry and/or contact our Support team ahead of purchase. Recommended alternatives for this product can be found below, along with publications, customer reviews and Q&amp;As</p>

#### Properties

<b>Form</b>	Liquid
<b>Storage instructions</b>	Shipped at 4°C. Upon delivery aliquot and store at -20°C. Avoid freeze / thaw cycles.
<b>Storage buffer</b>	pH: 6.8 Preservative: 0.09% Sodium azide Constituents: 0.1% BSA, Tris buffered saline
<b>Purity</b>	Immunogen affinity purified
<b>Purification notes</b>	ab87812 was affinity purified using an epitope specific to PKN2 immobilized on solid support.
<b>Clonality</b>	Polyclonal
<b>Isotype</b>	IgG

## Applications

### The Abpromise guarantee

Our **Abpromise guarantee** covers the use of ab87812 in the following tested applications.

The application notes include recommended starting dilutions; optimal dilutions/concentrations should be determined by the end user.

Application	Abreviews	Notes
WB		1/2000 - 1/10000. Predicted molecular weight: 112 kDa.
IP		Use at 2-5 µg/mg of lysate.

## Target

### Function

Exhibits a preference for highly basic protein substrates.

### Sequence similarities

Belongs to the protein kinase superfamily. AGC Ser/Thr protein kinase family. PKC subfamily. Contains 1 AGC-kinase C-terminal domain. Contains 1 C2 domain. Contains 1 protein kinase domain. Contains 3 REM (Hr1) repeats.

### Domain

The C1 domain does not bind the diacylglycerol (DAG).

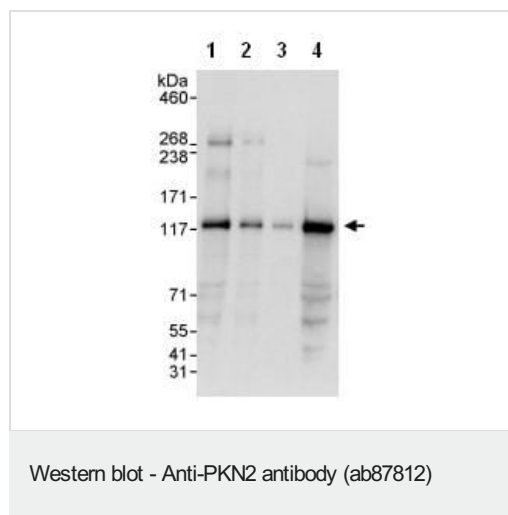
### Post-translational modifications

Autophosphorylated.  
Activated by limited proteolysis with trypsin.

### Cellular localization

Cytoplasm.

## Images



**All lanes :** Anti-PKN2 antibody (ab87812) at 0.04 µg/ml

**Lane 1 :** HeLa whole cell lysate at 50 µg

**Lane 2 :** HeLa whole cell lysate at 15 µg

**Lane 3 :** HeLa whole cell lysate at 5 µg

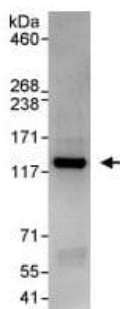
**Lane 4 :** 293T whole cell lysate at 50 µg

Developed using the ECL technique.

**Predicted band size:** 112 kDa

**Observed band size:** 117 kDa

**Exposure time:** 10 seconds



Immunoprecipitation - Anti-PKN2 antibody (ab87812)

Detection of PKN2 in immunoprecipitates of whole cell lysate from HeLa cells (1 mg for IP, 20% of IP loaded), using ab87812 at 3 µg/mg lysate for IP and at 1 µg/ml for subsequent Western blot. Detection: Chemiluminescence with an exposure time of 10 seconds.

**Please note:** All products are "FOR RESEARCH USE ONLY. NOT FOR USE IN DIAGNOSTIC PROCEDURES"

#### Our Abpromise to you: Quality guaranteed and expert technical support

---

- Replacement or refund for products not performing as stated on the datasheet
- Valid for 12 months from date of delivery
- Response to your inquiry within 24 hours
- We provide support in Chinese, English, French, German, Japanese and Spanish
- Extensive multi-media technical resources to help you
- We investigate all quality concerns to ensure our products perform to the highest standards

If the product does not perform as described on this datasheet, we will offer a refund or replacement. For full details of the Abpromise, please visit <https://www.abcam.com/abpromise> or contact our technical team.

#### Terms and conditions

---

- Guarantee only valid for products bought direct from Abcam or one of our authorized distributors