

Product datasheet

Anti-PKN3 antibody [EPR3511(2)] ab155076

Recombinant RabMAb

[1 References](#) [5 Images](#)

Overview

Product name	Anti-PKN3 antibody [EPR3511(2)]
Description	Rabbit monoclonal [EPR3511(2)] to PKN3
Host species	Rabbit
Tested applications	Suitable for: Flow Cyt (Intra), WB, ICC/IF Unsuitable for: IHC-P or IP
Species reactivity	Reacts with: Mouse, Rat, Human
Immunogen	Synthetic peptide within Human PKN3 aa 100-200. The exact sequence is proprietary. Database link: Q6P5Z2
Positive control	WB: PC-3, LNCaP, Mouse spleen, Rat spleen lysates, ICC/IF: LNCaP cells. Flow Cyt (intra): LNCaP cells.
General notes	This product is a recombinant monoclonal antibody, which offers several advantages including: <ul style="list-style-type: none">- High batch-to-batch consistency and reproducibility- Improved sensitivity and specificity- Long-term security of supply- Animal-free production For more information see here . Our RabMAb [®] technology is a patented hybridoma-based technology for making rabbit monoclonal antibodies. For details on our patents, please refer to RabMAb[®] patents .

Properties

Form	Liquid
Storage instructions	Shipped at 4°C. Upon delivery aliquot and store at -20°C. Avoid repeated freeze / thaw cycles.
Storage buffer	Preservative: 0.01% Sodium azide Constituents: 59% PBS, 40% Glycerol (glycerin, glycerine), 0.05% BSA
Purity	Protein A purified
Clonality	Monoclonal
Clone number	EPR3511(2)
Isotype	IgG

Applications

The Abpromise guarantee Our **Abpromise guarantee** covers the use of ab155076 in the following tested applications. The application notes include recommended starting dilutions; optimal dilutions/concentrations should be determined by the end user.

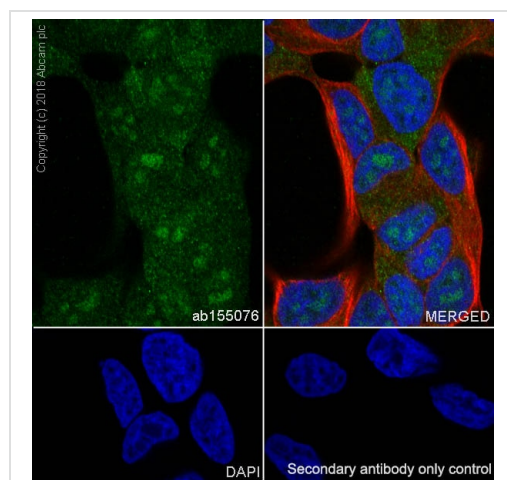
Application	Abreviews	Notes
Flow Cyt (Intra)		1/300.
WB		1/1000 - 1/10000. Detects a band of approximately 106 kDa (predicted molecular weight: 99 kDa).
ICC/IF		1/300. For unpurified use at 1/100 - 1/250.

Application notes Is unsuitable for IHC-P or IP.

Target

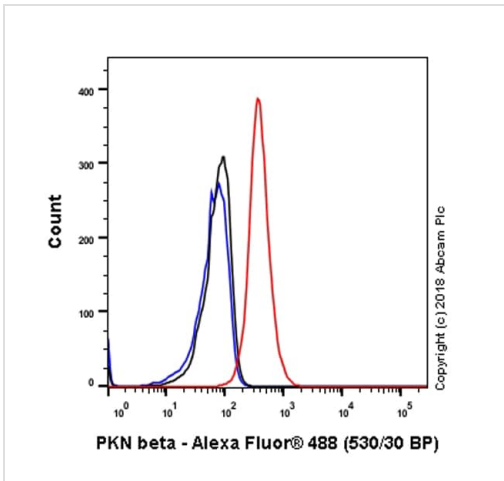
Function	Contributes to invasiveness in malignant prostate cancer.
Tissue specificity	Expressed in prostate tumors and various cancer cell lines. Not expressed in adult tissues.
Sequence similarities	Belongs to the protein kinase superfamily. AGC Ser/Thr protein kinase family. PKC subfamily. Contains 1 AGC-kinase C-terminal domain. Contains 1 protein kinase domain. Contains 3 REM (Hr1) repeats.
Domain	The C1 domain does not bind the diacylglycerol (DAG).
Post-translational modifications	Autophosphorylated.
Cellular localization	Nucleus. Cytoplasm > perinuclear region. Nuclear and perinuclear Golgi region.

Images



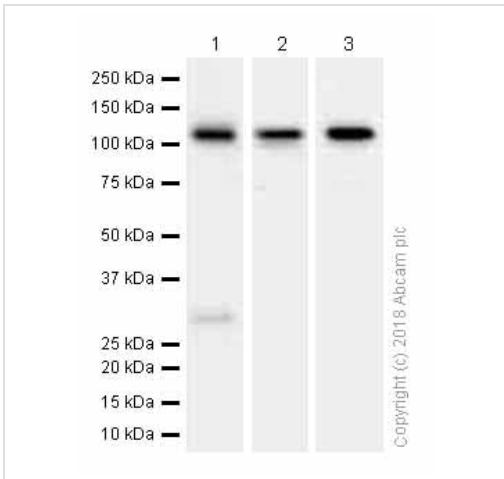
Immunocytochemistry/ Immunofluorescence analysis of LNCaP (Human prostate carcinoma epithelial cell) cells labeling PKN3 with Purified ab155076 at 1:300 dilution (10 µg/ml). Cells were fixed in 4% Paraformaldehyde and permeabilized with 0.1% tritonX-100. Cells were counterstained with Ab195889 Anti-alpha Tubulin antibody [DM1A] - Microtubule Marker (Alexa Fluor® 594) 1:200 (2.5 µg/ml). Goat anti rabbit IgG (Alexa Fluor® 488, **ab150077**) was used as the secondary antibody at 1:1000 (2 µg/ml) dilution. DAPI nuclear counterstain. PBS instead of the primary antibody was used as the secondary antibody only control.

Immunocytochemistry/ Immunofluorescence - Anti-PKN3 antibody [EPR3511(2)] (ab155076)



Flow Cytometry (Intracellular) - Anti-PKN3 antibody [EPR3511(2)] (ab155076)

Intracellular Flow Cytometry analysis of LNCaP (Human prostate carcinoma epithelial cell) cells labeling PKN3 with Purified ab155076 at 1/300 dilution (10µg/ml) (red). Cells were fixed with 4% Paraformaldehyde. A Goat anti rabbit IgG (Alexa Fluor® 488, **ab150077**) secondary antibody was used at 1/2000. Isotype control - Rabbit monoclonal IgG (Black). Unlabeled control - Cell without incubation with primary antibody and secondary antibody (Blue).



Western blot - Anti-PKN3 antibody [EPR3511(2)] (ab155076)

All lanes : Anti-PKN3 antibody [EPR3511(2)] (ab155076) at 1/5000 dilution (Purified)

Lane 1 : PC-3 (Human prostate adenocarcinoma epithelial cell) whole cell lysates

Lane 2 : Mouse spleen lysates

Lane 3 : Rat spleen lysates

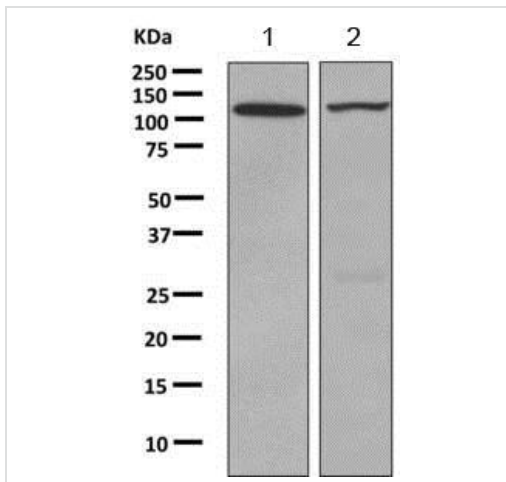
Lysates/proteins at 15 µg per lane.

Secondary

All lanes : Goat Anti-Rabbit IgG H&L (HRP) (**ab97051**) at 1/20000 dilution

Predicted band size: 99 kDa

Observed band size: 106 kDa



Western blot - Anti-PKN3 antibody [EPR3511(2)]
(ab155076)

All lanes : Anti-PKN3 antibody [EPR3511(2)] (ab155076) at 1/1000 dilution

Lane 1 : LNCaP cell lysate





Lane 2 : PC-3 cell lysate

Lysates/proteins at 10 µg per lane.

Predicted band size: 99 kDa

This image was generated using the unpurified version of the product.

Why choose a recombinant antibody?

 Research with confidence Consistent and reproducible results	 Long-term and scalable supply Recombinant technology
 Success from the first experiment Confirmed specificity	 Ethical standards compliant Animal-free production

Anti-PKN3 antibody [EPR3511(2)] (ab155076)

Please note: All products are "FOR RESEARCH USE ONLY. NOT FOR USE IN DIAGNOSTIC PROCEDURES"

Our Abpromise to you: Quality guaranteed and expert technical support

- Replacement or refund for products not performing as stated on the datasheet
- Valid for 12 months from date of delivery
- Response to your inquiry within 24 hours
- We provide support in Chinese, English, French, German, Japanese and Spanish
- Extensive multi-media technical resources to help you
- We investigate all quality concerns to ensure our products perform to the highest standards

If the product does not perform as described on this datasheet, we will offer a refund or replacement. For full details of the Abpromise, please visit <https://www.abcam.com/abpromise> or contact our technical team.

Terms and conditions

- Guarantee only valid for products bought direct from Abcam or one of our authorized distributors