

Product datasheet

Anti-PLAC8 antibody ab122652

[5 References](#) [2 Images](#)

Overview

Product name	Anti-PLAC8 antibody
Description	Rabbit polyclonal to PLAC8
Host species	Rabbit
Tested applications	Suitable for: IHC-P, WB
Species reactivity	Reacts with: Human
Immunogen	antigen, corresponding to amino acids 1-115 of Human PLAC8. (Q9NZF1)
Positive control	Human tonsil tissue. RT-4 cell lysate. Human liver and tonsil tissue lysate.
General notes	<p>The Life Science industry has been in the grips of a reproducibility crisis for a number of years. Abcam is leading the way in addressing this with our range of recombinant monoclonal antibodies and knockout edited cell lines for gold-standard validation. Please check that this product meets your needs before purchasing.</p> <p>If you have any questions, special requirements or concerns, please send us an inquiry and/or contact our Support team ahead of purchase. Recommended alternatives for this product can be found below, along with publications, customer reviews and Q&As</p>

Properties

Form	Liquid
Storage instructions	Shipped at 4°C. Upon delivery aliquot and store at -20°C. Avoid freeze / thaw cycles.
Storage buffer	<p>pH: 7.20</p> <p>Preservative: 0.02% Sodium azide</p> <p>Constituents: 59% PBS, 40% Glycerol (glycerin, glycerine)</p>
Purity	Immunogen affinity purified
Clonality	Polyclonal
Isotype	IgG

Applications

The Abpromise guarantee Our **Abpromise guarantee** covers the use of ab122652 in the following tested applications. The application notes include recommended starting dilutions; optimal dilutions/concentrations should be determined by the end user.

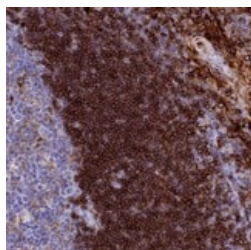
Application	Abreviews	Notes
IHC-P		1/500 - 1/1000. Perform heat mediated antigen retrieval with citrate buffer pH 6 before commencing with IHC staining protocol.
WB		Use a concentration of 0.04 - 0.4 µg/ml.

Target

Tissue specificity Expressed at high levels in plasmacytoid dendritic cells. High expression in spleen, lymph nodes, peripheral blood leukocytes, and bone marrow, with lower expression in thymus, appendix, and fetal liver.

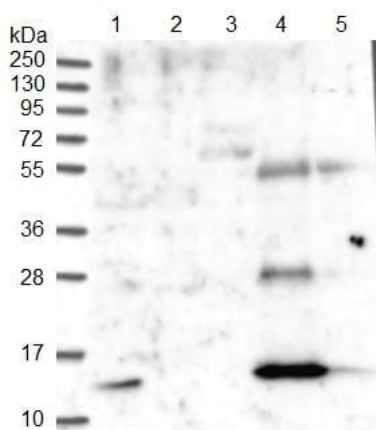
Sequence similarities Belongs to the cornifelin family.

Images



ab122652 at 1/200 dilution staining PLAC8 in paraffin-embedded Human tonsil tissue by Immunohistochemistry.

Immunohistochemistry (Formalin/PFA-fixed paraffin-embedded sections) - Anti-PLAC8 antibody (ab122652)



All lanes : Anti-PLAC8 antibody (ab122652) at 1/250 dilution

Lane 1 : RT-4 cell lysate

Lane 2 : U-251 MG cell lysate

Lane 3 : Human plasma lysate

Lane 4 : Human liver tissue lysate

Lane 5 : Human tonsil tissue lysate

Developed using the ECL technique.

Western blot - Anti-PLAC8 antibody (ab122652)

Please note: All products are "FOR RESEARCH USE ONLY. NOT FOR USE IN DIAGNOSTIC PROCEDURES"

Our Abpromise to you: Quality guaranteed and expert technical support

- Replacement or refund for products not performing as stated on the datasheet
- Valid for 12 months from date of delivery
- Response to your inquiry within 24 hours

- We provide support in Chinese, English, French, German, Japanese and Spanish
- Extensive multi-media technical resources to help you
- We investigate all quality concerns to ensure our products perform to the highest standards

If the product does not perform as described on this datasheet, we will offer a refund or replacement. For full details of the Abpromise, please visit <https://www.abcam.com/abpromise> or contact our technical team.

Terms and conditions

- Guarantee only valid for products bought direct from Abcam or one of our authorized distributors