




## Product datasheet

### Anti-PLCL2 antibody - C-terminal ab199852

[2 Images](#)

#### Overview

<b>Product name</b>	Anti-PLCL2 antibody - C-terminal
<b>Description</b>	Rabbit polyclonal to PLCL2 - C-terminal
<b>Host species</b>	Rabbit
<b>Tested applications</b>	<b>Suitable for:</b> IP, WB
<b>Species reactivity</b>	<b>Reacts with:</b> Human <b>Predicted to work with:</b> Sheep, Horse, Cow, Dog, Chimpanzee, Rhesus monkey, Gorilla, Orangutan 
<b>Immunogen</b>	<p>Synthetic peptide within Human PLCL2 aa 1050 to the C-terminus (C terminal). The exact immunogen sequence used to generate this antibody is proprietary information. If additional detail on the immunogen is needed to determine the suitability of the antibody for your needs, please <b>contact</b> our Scientific Support team to discuss your requirements. (NP_001137854.1).</p> <p>Database link: <a href="#">Q9UPR0</a></p> <div>  <a href="#">Run BLAST with</a>  <a href="#">Run BLAST with</a> </div>
<b>Positive control</b>	HeLa, 293T, and Jurkat whole cell lysates.
<b>General notes</b>	<p>The Life Science industry has been in the grips of a reproducibility crisis for a number of years. Abcam is leading the way in addressing this with our range of recombinant monoclonal antibodies and knockout edited cell lines for gold-standard validation. Please check that this product meets your needs before purchasing.</p> <p>If you have any questions, special requirements or concerns, please send us an inquiry and/or contact our Support team ahead of purchase. Recommended alternatives for this product can be found below, along with publications, customer reviews and Q&amp;As</p>

#### Properties

<b>Form</b>	Liquid
<b>Storage instructions</b>	Shipped at 4°C. Store at +4°C short term (1-2 weeks). Upon delivery aliquot. Store at -20°C long term. Avoid freeze / thaw cycle.
<b>Storage buffer</b>	<p>pH: 7</p> <p>Preservative: 0.09% Sodium azide</p> <p>Constituent: 99% Tris citrate/phosphate</p> <p>pH 7 to 8</p>

<b>Purity</b>	Immunogen affinity purified
<b>Clonality</b>	Polyclonal
<b>Isotype</b>	IgG

## Applications

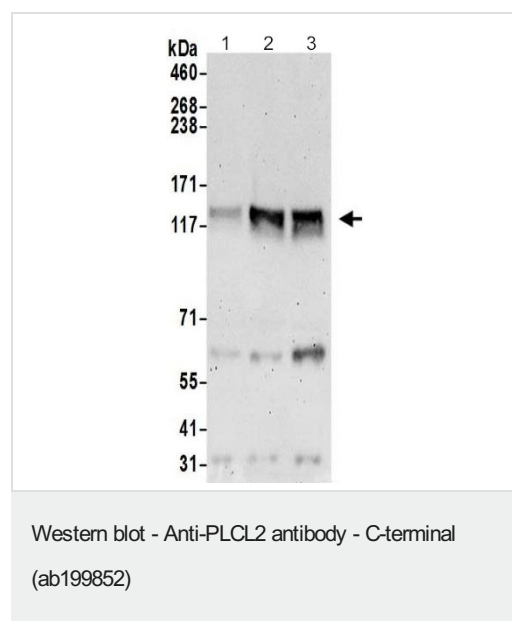
**The Abpromise guarantee** Our **Abpromise guarantee** covers the use of ab199852 in the following tested applications.  
The application notes include recommended starting dilutions; optimal dilutions/concentrations should be determined by the end user.

Application	Abreviews	Notes
<b>IP</b>		Use at 2-10 µg/mg of lysate.
<b>WB</b>		1/2000 - 1/10000. Predicted molecular weight: 126 kDa.

## Target

<b>Function</b>	May play an role in the regulation of Ins(1,4,5)P3 around the endoplasmic reticulum.
<b>Sequence similarities</b>	Contains 1 C2 domain. Contains 1 PH domain. Contains 1 PI-PLC X-box domain. Contains 1 PI-PLC Y-box domain.
<b>Cellular localization</b>	Cytoplasm. Predominantly localized to perinuclear areas in both myoblast and myotube C2C12 cells.

## Images



**All lanes :** Anti-PLCL2 antibody - C-terminal (ab199852) at 0.1 µg/ml

**Lane 1 :** HeLa whole cell lysate

**Lane 2 :** 293T whole cell lysate

**Lane 3 :** Jurkat whole cell lysate

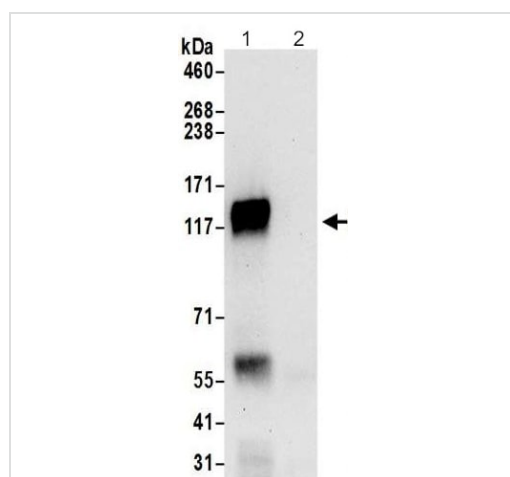
Lysates/proteins at 50 µg per lane.

Developed using the ECL technique.

**Predicted band size:** 126 kDa

**Exposure time:** 3 minutes

Lysates prepared with NETN lysis buffer.



Immunoprecipitation - Anti-PLCL2 antibody - C-terminal (ab199852)

Detection of PLCL2 in immunoprecipitates of 293T whole cell lysates prepared using NETN lysis buffer (1 mg for IP, 20% of IP loaded) using ab199852 at 6 µg/mg lysate for IP (Lane 1) and at 1 µg/ml for subsequent Western blot detection. Lane 2 represents control IgG IP.

Detection: Chemiluminescence with an exposure time of 30 seconds.

**Please note:** All products are "FOR RESEARCH USE ONLY. NOT FOR USE IN DIAGNOSTIC PROCEDURES"

### Our Abpromise to you: Quality guaranteed and expert technical support

- Replacement or refund for products not performing as stated on the datasheet
- Valid for 12 months from date of delivery
- Response to your inquiry within 24 hours
- We provide support in Chinese, English, French, German, Japanese and Spanish
- Extensive multi-media technical resources to help you
- We investigate all quality concerns to ensure our products perform to the highest standards

If the product does not perform as described on this datasheet, we will offer a refund or replacement. For full details of the Abpromise, please visit <https://www.abcam.com/abpromise> or contact our technical team.

### Terms and conditions

- Guarantee only valid for products bought direct from Abcam or one of our authorized distributors