

## Product datasheet

# Anti-Plexin A1 antibody ab23391

★★★★★ [3 Abreviews](#) [12 References](#) [1 Image](#)

### Overview

<b>Product name</b>	Anti-Plexin A1 antibody
<b>Description</b>	Rabbit polyclonal to Plexin A1
<b>Host species</b>	Rabbit
<b>Tested applications</b>	<b>Suitable for:</b> IP, ELISA, ICC/IF, WB
<b>Species reactivity</b>	<b>Reacts with:</b> Mouse, Rat, Human
<b>Immunogen</b>	Synthetic peptide corresponding to Human Plexin A1 aa 182-200. Sequence: RLMANEEDADMFGFVYQDE

 [Run BLAST with](#)

 [Run BLAST with](#)

### General notes

The Life Science industry has been in the grips of a reproducibility crisis for a number of years. Abcam is leading the way in addressing this with our range of recombinant monoclonal antibodies and knockout edited cell lines for gold-standard validation. Please check that this product meets your needs before purchasing.

If you have any questions, special requirements or concerns, please send us an inquiry and/or contact our Support team ahead of purchase. Recommended alternatives for this product can be found below, along with publications, customer reviews and Q&As

### Properties

<b>Form</b>	Liquid
<b>Storage instructions</b>	Shipped at 4°C. Upon delivery aliquot and store at -20°C. Avoid freeze / thaw cycles.
<b>Storage buffer</b>	Preservative: 0.05% Sodium azide Constituents: PBS, 50% Glycerol, 0.1% BSA
<b>Purity</b>	Immunogen affinity purified
<b>Clonality</b>	Polyclonal
<b>Isotype</b>	IgG

### Applications

**The Abpromise guarantee** Our [Abpromise guarantee](#) covers the use of ab23391 in the following tested applications.

The application notes include recommended starting dilutions; optimal dilutions/concentrations should be determined by the end user.

Application	Abreviews	Notes
IP		Use at an assay dependent concentration.
ELISA		Use at an assay dependent concentration.
ICC/IF	★★★★★ (1)	Use at an assay dependent concentration. See Abreview.
WB		1/1000. Predicted molecular weight: 195 kDa.

## Target

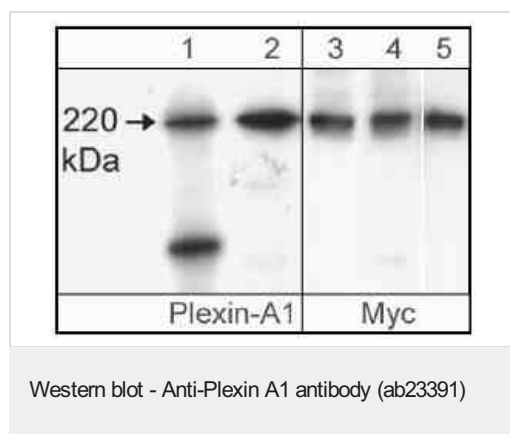
### Relevance

Function: Coreceptor for SEMA3A, SEMA3C, SEMA3F and SEMA6D. Necessary for signaling by class 3 semaphorins and subsequent remodeling of the cytoskeleton. Plays a role in axon guidance, invasive growth and cell migration. Class 3 semaphorins bind to a complex composed of a neuropilin and a plexin. The plexin modulates the affinity of the complex for specific semaphorins, and its cytoplasmic domain is required for the activation of down-stream signaling events in the cytoplasm. Tissue specificity: Detected in fetal brain, lung, liver and kidney. Similarity: Belongs to the plexin family. Contains 4 IPT/TIG domains. Contains 1 Sema domain.

### Cellular localization

Cell Membrane

## Images



Western blots showing Cos-7 cells transfected with mouse myc-tagged Plexin-A1 (lanes 1 & 3), neonatal rat brain (lane 2), or Plexin-A1 immunoprecipitated from myc-tagged Plexin-A1 transfected cells using anti-Myc (lane 4) or anti-Plexin-A1 (ab23391; lane 5). These blots were probed with either the affinity purified anti-Plexin-A1 (ab23391; lanes 1 & 2) or with mouse monoclonal anti-Myc (lanes 3-5).

**Please note:** All products are "FOR RESEARCH USE ONLY. NOT FOR USE IN DIAGNOSTIC PROCEDURES"

## Our Abpromise to you: Quality guaranteed and expert technical support

- Replacement or refund for products not performing as stated on the datasheet
- Valid for 12 months from date of delivery
- Response to your inquiry within 24 hours
- We provide support in Chinese, English, French, German, Japanese and Spanish

- Extensive multi-media technical resources to help you
- We investigate all quality concerns to ensure our products perform to the highest standards

If the product does not perform as described on this datasheet, we will offer a refund or replacement. For full details of the Abpromise, please visit <https://www.abcam.com/abpromise> or contact our technical team.

#### **Terms and conditions**

---

- Guarantee only valid for products bought direct from Abcam or one of our authorized distributors