


Product datasheet

Anti-Plexin B1 antibody ab136880

[2 Images](#)

Overview

Product name	Anti-Plexin B1 antibody
Description	Rabbit polyclonal to Plexin B1
Host species	Rabbit
Tested applications	Suitable for: WB, IHC-P
Species reactivity	Reacts with: Human Predicted to work with: Mouse 
Immunogen	Synthetic peptide. This information is proprietary to Abcam and/or its suppliers.
Positive control	Human liver tissue; HeLa cell membrane extract.
General notes	<p>The Life Science industry has been in the grips of a reproducibility crisis for a number of years. Abcam is leading the way in addressing this with our range of recombinant monoclonal antibodies and knockout edited cell lines for gold-standard validation. Please check that this product meets your needs before purchasing.</p> <p>If you have any questions, special requirements or concerns, please send us an inquiry and/or contact our Support team ahead of purchase. Recommended alternatives for this product can be found below, along with publications, customer reviews and Q&As</p>

Properties

Form	Liquid
Storage instructions	Shipped at 4°C. Store at +4°C short term (1-2 weeks). Upon delivery aliquot. Store at -20°C long term.
Storage buffer	Preservative: 0.05% Sodium azide Constituent: 99% PBS
Purity	Protein A purified
Clonality	Polyclonal
Isotype	IgG

Applications

The **Abpromise guarantee** Our **Abpromise guarantee** covers the use of ab136880 in the following tested applications.

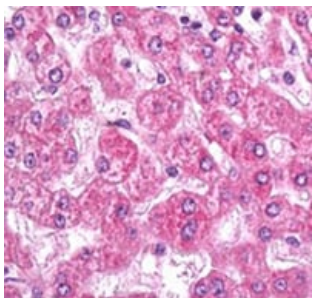
The application notes include recommended starting dilutions; optimal dilutions/concentrations should be determined by the end user.

Application	Abreviews	Notes
WB		1/200. Detects a band of approximately 200, 250 kDa (predicted molecular weight: 232 kDa).
IHC-P		Use a concentration of 5 µg/ml. Perform heat mediated antigen retrieval with citrate buffer pH 6 before commencing with IHC staining protocol.

Target

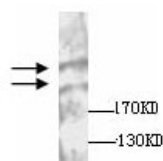
Function	Receptor for SEMA4D. Plays a role in RHOA activation and subsequent changes of the actin cytoskeleton. Plays a role in axon guidance, invasive growth and cell migration.
Tissue specificity	Highly expressed in fetal kidney, and at slightly lower levels in fetal brain, lung and liver.
Sequence similarities	Belongs to the plexin family. Contains 3 IPT/TIG domains. Contains 1 Sema domain.
Post-translational modifications	Phosphorylated on tyrosine residues by ERBB2 and MET upon SEMA4D binding. Proteolytic processing favors heterodimerization with PLXNB2 and SEMA4D binding.
Cellular localization	Secreted and Cell membrane.

Images



Immunohistochemical analysis of formalin-fixed, paraffin-embedded Human liver tissue labelling Plexin B1 with ab136880 at 5µg/ml.

Immunohistochemistry (Formalin/PFA-fixed paraffin-embedded sections) - Anti-Plexin B1 antibody (ab136880)



Anti-Plexin B1 antibody (ab136880) at 1/300 dilution + HeLa cell membrane extract

Predicted band size: 232 kDa

Western blot - Anti-Plexin B1 antibody (ab136880)

The higher band represents Plexin B1 precursor and the lower band Plexin B1 cleavage product.

Please note: All products are "FOR RESEARCH USE ONLY. NOT FOR USE IN DIAGNOSTIC PROCEDURES"

Our Abpromise to you: Quality guaranteed and expert technical support

- Replacement or refund for products not performing as stated on the datasheet
- Valid for 12 months from date of delivery
- Response to your inquiry within 24 hours

- We provide support in Chinese, English, French, German, Japanese and Spanish
- Extensive multi-media technical resources to help you
- We investigate all quality concerns to ensure our products perform to the highest standards

If the product does not perform as described on this datasheet, we will offer a refund or replacement. For full details of the Abpromise, please visit <https://www.abcam.com/abpromise> or contact our technical team.

Terms and conditions

- Guarantee only valid for products bought direct from Abcam or one of our authorized distributors