



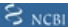


## Product datasheet

# Anti-Plexin D1 antibody ab96313

[3 References](#) [2 Images](#)

### Overview

<b>Product name</b>	Anti-Plexin D1 antibody
<b>Description</b>	Rabbit polyclonal to Plexin D1
<b>Host species</b>	Rabbit
<b>Tested applications</b>	<b>Suitable for:</b> WB
<b>Species reactivity</b>	<b>Reacts with:</b> Human <b>Predicted to work with:</b> Mouse 
<b>Immunogen</b>	Synthetic peptide corresponding to amino acids 1633-1694 (RKKLNTLAHY KIPEGASLAM SLIDKKDNTL GRVKDLDTEK YFHLVLPTDE LAEPKKSHRQ SH) of Human Plexin D1.  <a href="#">Run BLAST with</a>   <a href="#">Run BLAST with</a> 
<b>General notes</b>	<p>The Life Science industry has been in the grips of a reproducibility crisis for a number of years. Abcam is leading the way in addressing this with our range of recombinant monoclonal antibodies and knockout edited cell lines for gold-standard validation. Please check that this product meets your needs before purchasing.</p> <p>If you have any questions, special requirements or concerns, please send us an inquiry and/or contact our Support team ahead of purchase. Recommended alternatives for this product can be found below, along with publications, customer reviews and Q&amp;As</p>

### Properties

<b>Form</b>	Liquid
<b>Storage instructions</b>	Shipped at 4°C. Upon delivery aliquot and store at -20°C or -80°C. Avoid repeated freeze / thaw cycles.
<b>Storage buffer</b>	pH: 7.00 Preservative: 0.025% Proclin 300 Constituents: 79% PBS, 20% Glycerol (glycerin, glycerine)
<b>Purity</b>	Immunogen affinity purified
<b>Clonality</b>	Polyclonal
<b>Isotype</b>	IgG

### Applications

## The Abpromise guarantee

Our **Abpromise guarantee** covers the use of ab96313 in the following tested applications.

The application notes include recommended starting dilutions; optimal dilutions/concentrations should be determined by the end user.

Application	Abreviews	Notes
WB		1/1000. Predicted molecular weight: 212 kDa.

## Target

### Tissue specificity

Detected at low levels in heart, placenta, lung, skeletal muscle, kidney, thymus and liver. Detected at very low levels in brain, colon, spleen, small intestine and peripheral blood leukocytes.

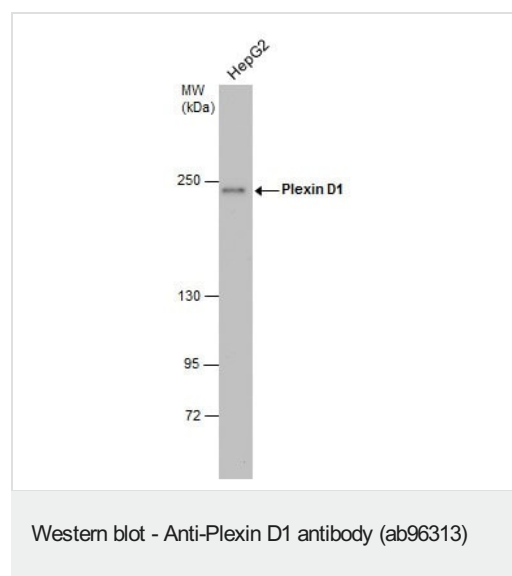
### Sequence similarities

Belongs to the plexin family.  
Contains 3 IPT/TIG domains.  
Contains 1 Sema domain.

### Cellular localization

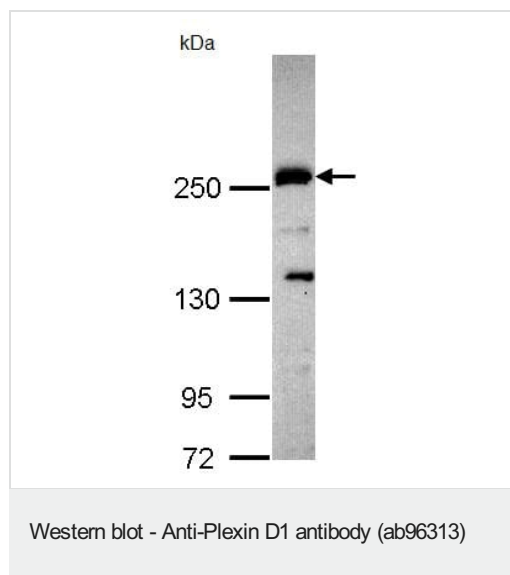
Cell membrane.

## Images



Anti-Plexin D1 antibody (ab96313) at 1/1000 dilution + HepG2 whole cell lysates at 30 µg

**Predicted band size:** 212 kDa



Anti-Plexin D1 antibody (ab96313) at 1/1000 dilution + HepG2 whole cell lysate at 30 µg

**Predicted band size:** 212 kDa

5% SDS PAGE

**Please note:** All products are "FOR RESEARCH USE ONLY. NOT FOR USE IN DIAGNOSTIC PROCEDURES"

### Our Abpromise to you: Quality guaranteed and expert technical support

---

- Replacement or refund for products not performing as stated on the datasheet
- Valid for 12 months from date of delivery
- Response to your inquiry within 24 hours
- We provide support in Chinese, English, French, German, Japanese and Spanish
- Extensive multi-media technical resources to help you
- We investigate all quality concerns to ensure our products perform to the highest standards

If the product does not perform as described on this datasheet, we will offer a refund or replacement. For full details of the Abpromise, please visit <https://www.abcam.com/abpromise> or contact our technical team.

### Terms and conditions

---

- Guarantee only valid for products bought direct from Abcam or one of our authorized distributors