

Anti-PLGF antibody ab196666

[10 References](#) [4 Images](#)

Overview

Product name	Anti-PLGF antibody
Description	Rabbit polyclonal to PLGF
Host species	Rabbit
Tested applications	Suitable for: IHC-P, WB
Species reactivity	Reacts with: Mouse, Rat, Human
Immunogen	Recombinant fragment corresponding to Human PLGF (N terminal). Database link: P49763-3
Positive control	BT474 cell extract; Mouse brain tissue extract; Rat testis, Human stomach cancer and Rat kidney tissues
General notes	<p>The Life Science industry has been in the grips of a reproducibility crisis for a number of years. Abcam is leading the way in addressing this with our range of recombinant monoclonal antibodies and knockout edited cell lines for gold-standard validation. Please check that this product meets your needs before purchasing.</p> <p>If you have any questions, special requirements or concerns, please send us an inquiry and/or contact our Support team ahead of purchase. Recommended alternatives for this product can be found below, along with publications, customer reviews and Q&As</p>

Properties

Form	Liquid
Storage instructions	Shipped at 4°C. Store at +4°C short term (1-2 weeks). Upon delivery aliquot. Store at -20°C long term. Avoid freeze / thaw cycle.
Storage buffer	<p>pH: 7.40</p> <p>Preservative: 0.02% Sodium azide</p> <p>Constituents: 49% PBS, 50% Glycerol (glycerin, glycerine), 0.87% Sodium chloride</p> <p>PBS (without Mg²⁺ and Ca²⁺)</p>
Purity	Immunogen affinity purified
Clonality	Polyclonal
Isotype	IgG

Applications

The Abpromise guarantee

Our **Abpromise guarantee** covers the use of ab196666 in the following tested applications.

The application notes include recommended starting dilutions; optimal dilutions/concentrations should be determined by the end user.

Application	Abreviews	Notes
IHC-P		1/50 - 1/100.
WB		1/500 - 1/2000. Predicted molecular weight: 25 kDa.

Target

Function

Growth factor active in angiogenesis and endothelial cell growth, stimulating their proliferation and migration. It binds to the receptor FLT1/VEGFR-1. Isoform PIGF-2 binds NRP1/neuropilin-1 and NRP2/neuropilin-2 in a heparin-dependent manner.

Tissue specificity

While the three isoforms are present in most placental tissues, PIGF-2 is specific to early (8 week) placenta and only PIGF-1 is found in the colon and mammary carcinomas.

Sequence similarities

Belongs to the PDGF/VEGF growth factor family.

Domain

Isoform PIGF-2 contains a basic insert which acts as a cell retention signal.

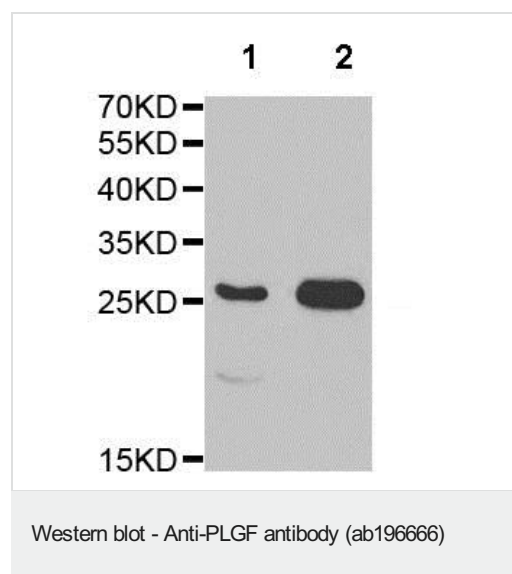
Post-translational modifications

N-glycosylated.

Cellular localization

Secreted. The three isoforms are secreted but PIGF-2 appears to remain cell attached unless released by heparin.

Images

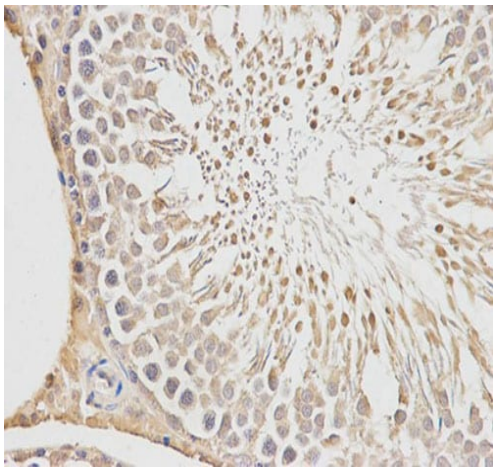


All lanes : Anti-PLGF antibody (ab196666) at 1/500 dilution

Lane 1 : BT474 cell extract

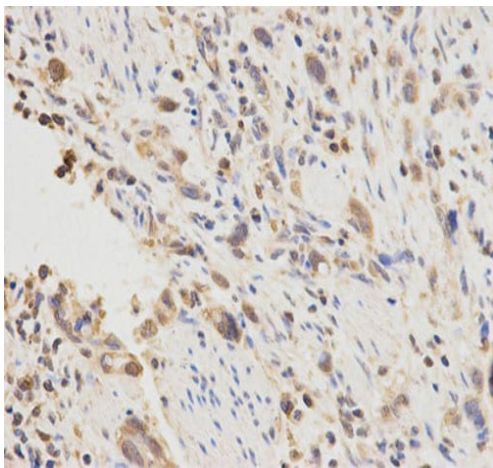
Lane 2 : Mouse brain tissue extract

Predicted band size: 25 kDa



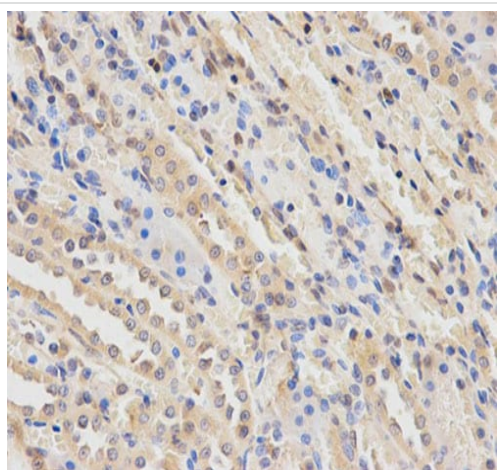
Immunohistochemical analysis of paraffin embedded Rat testis tissue labeling PLGF with ab196666 at 1/200 dilution. (400x magnification).

Immunohistochemistry (Formalin/PFA-fixed paraffin-embedded sections) - Anti-PLGF antibody (ab196666)



Immunohistochemical analysis of paraffin embedded Human stomach cancer tissue labeling PLGF with ab196666 at 1/200 dilution. (400x magnification).

Immunohistochemistry (Formalin/PFA-fixed paraffin-embedded sections) - Anti-PLGF antibody (ab196666)



Immunohistochemical analysis of paraffin embedded Rat kidney tissue labeling PLGF with ab196666 at 1/200 dilution. (400x magnification).

Immunohistochemistry (Formalin/PFA-fixed paraffin-embedded sections) - Anti-PLGF antibody (ab196666)

Please note: All products are "FOR RESEARCH USE ONLY. NOT FOR USE IN DIAGNOSTIC PROCEDURES"

Our Abpromise to you: Quality guaranteed and expert technical support

- Replacement or refund for products not performing as stated on the datasheet
- Valid for 12 months from date of delivery
- Response to your inquiry within 24 hours
- We provide support in Chinese, English, French, German, Japanese and Spanish
- Extensive multi-media technical resources to help you
- We investigate all quality concerns to ensure our products perform to the highest standards

If the product does not perform as described on this datasheet, we will offer a refund or replacement. For full details of the Abpromise, please visit <https://www.abcam.com/abpromise> or contact our technical team.

Terms and conditions

- Guarantee only valid for products bought direct from Abcam or one of our authorized distributors