

Product datasheet

Anti-Plxdc2 antibody ab67225

4 Images

Overview

Product name	Anti-Plxdc2 antibody
Description	Rabbit polyclonal to Plxdc2
Host species	Rabbit
Tested applications	Suitable for: WB, ICC/IF, IHC-P
Species reactivity	Reacts with: Mouse, Human
Immunogen	An 18 amino acid peptide from near the amino terminus of human Plxdc2.
Positive control	WB: Human brain tissue lysate; Mouse cerebrum tissue lysate. IHC-P: Human brain tissue. ICC/IF: Human brain cells.
General notes	<p>The Life Science industry has been in the grips of a reproducibility crisis for a number of years. Abcam is leading the way in addressing this with our range of recombinant monoclonal antibodies and knockout edited cell lines for gold-standard validation. Please check that this product meets your needs before purchasing.</p> <p>If you have any questions, special requirements or concerns, please send us an inquiry and/or contact our Support team ahead of purchase. Recommended alternatives for this product can be found below, along with publications, customer reviews and Q&As</p>

Properties

Form	Liquid
Storage instructions	Shipped at 4°C. Store at +4°C.
Storage buffer	pH: 7.2 Preservative: 0.02% Sodium azide Constituent: PBS
Purity	Immunogen affinity purified
Clonality	Polyclonal
Isotype	IgG

Applications

The Abpromise guarantee Our **Abpromise guarantee** covers the use of ab67225 in the following tested applications.

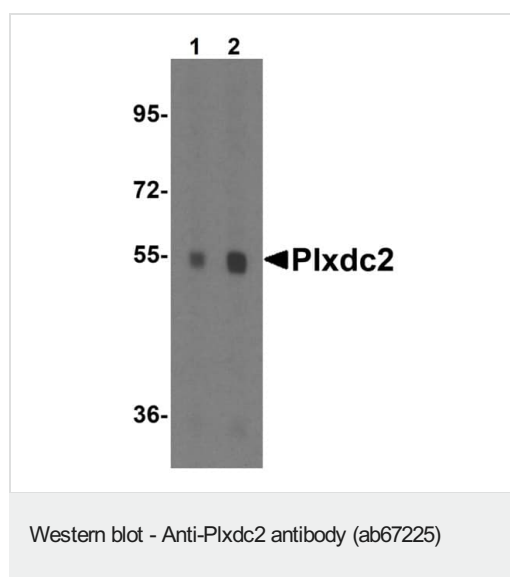
The application notes include recommended starting dilutions; optimal dilutions/concentrations should be determined by the end user.

Application	Abreviews	Notes
WB		Use a concentration of 0.5 - 1 µg/ml. Detects a band of approximately 60 kDa (predicted molecular weight: 60 kDa).
ICC/IF		Use a concentration of 20 µg/ml.
IHC-P		Use at an assay dependent concentration.

Target

Function	May play a role in tumor angiogenesis.
Tissue specificity	Expressed in the endothelial cells of the stroma but not in the endothelial cells of normal colonic tissue.
Sequence similarities	Belongs to the plexin family. Contains 1 PSI domain.
Cellular localization	Membrane.

Images

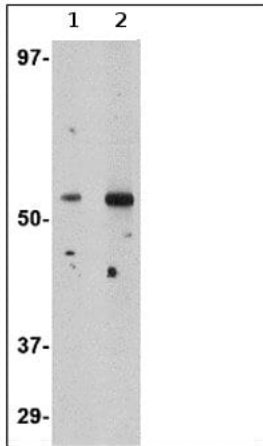


Lane 1 : Anti-Plxdc2 antibody (ab67225) at 1 µg/ml

Lane 2 : Anti-Plxdc2 antibody (ab67225) at 2 µg/ml

All lanes : Mouse cerebrum tissue lysate

Predicted band size: 60 kDa



Western blot - Anti-Plxdc2 antibody (ab67225)

Lane 1 : Anti-Plxdc2 antibody (ab67225) at 0.5 µg/ml

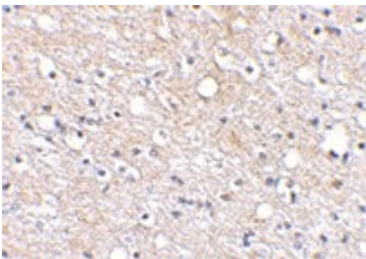
Lane 2 : Anti-Plxdc2 antibody (ab67225) at 1 µg/ml

All lanes : human brain tissue lysate

Lysates/proteins at 15 µg per lane.

Predicted band size: 60 kDa

Observed band size: 60 kDa



Immunohistochemistry (Formalin/PFA-fixed paraffin-embedded sections) - Anti-Plxdc2 antibody (ab67225)

ab67225 at 2.5µg/ml staining of Plxdc2 in human brain tissue using IHC-P.

Immunocytochemistry/ Immunofluorescence - Anti-Plxdc2 antibody (ab67225)

Immunofluorescence of Plxdc2 in Human Brain cells using ab67225 at 20 ug/ml.

Please note: All products are "FOR RESEARCH USE ONLY. NOT FOR USE IN DIAGNOSTIC PROCEDURES"

Our Abpromise to you: Quality guaranteed and expert technical support

- Replacement or refund for products not performing as stated on the datasheet

- Valid for 12 months from date of delivery
- Response to your inquiry within 24 hours

- We provide support in Chinese, English, French, German, Japanese and Spanish
- Extensive multi-media technical resources to help you
- We investigate all quality concerns to ensure our products perform to the highest standards

If the product does not perform as described on this datasheet, we will offer a refund or replacement. For full details of the Abpromise, please visit <https://www.abcam.com/abpromise> or contact our technical team.

Terms and conditions

- Guarantee only valid for products bought direct from Abcam or one of our authorized distributors