

Anti-PMP2 antibody ab203249

2 Images

Overview

Product name	Anti-PMP2 antibody
Description	Rabbit polyclonal to PMP2
Host species	Rabbit
Tested applications	Suitable for: IHC-P
Species reactivity	Reacts with: Rat
Immunogen	Synthetic peptide within Human PMP2 conjugated to Keyhole Limpet Haemocyanin (KLH). The exact sequence is proprietary. Database link: P02689
Positive control	Rat brain tissue.
General notes	<p>The Life Science industry has been in the grips of a reproducibility crisis for a number of years. Abcam is leading the way in addressing this with our range of recombinant monoclonal antibodies and knockout edited cell lines for gold-standard validation. Please check that this product meets your needs before purchasing.</p> <p>If you have any questions, special requirements or concerns, please send us an inquiry and/or contact our Support team ahead of purchase. Recommended alternatives for this product can be found below, along with publications, customer reviews and Q&As</p>

Properties

Form	Liquid
Storage instructions	Shipped at 4°C. Store at +4°C short term (1-2 weeks). Upon delivery aliquot. Store at -20°C long term. Avoid freeze / thaw cycle.
Storage buffer	pH: 7.40 Preservative: 0.02% Proclin 300 Constituents: 50% Glycerol (glycerin, glycerine), 1% BSA, 48.98% TBS, 1X
Purity	Protein A purified
Clonality	Polyclonal
Isotype	IgG

Applications

The Abpromise guarantee

Our **Abpromise guarantee** covers the use of ab203249 in the following tested applications.

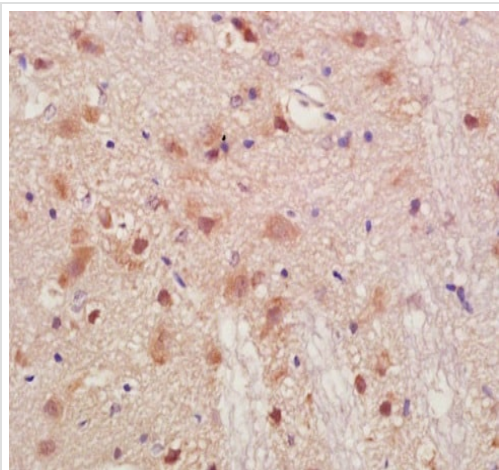
The application notes include recommended starting dilutions; optimal dilutions/concentrations should be determined by the end user.

Application	Abreviews	Notes
IHC-P		1/100 - 1/500. 1/50-1/200 when using fluorescent detection methods.

Target

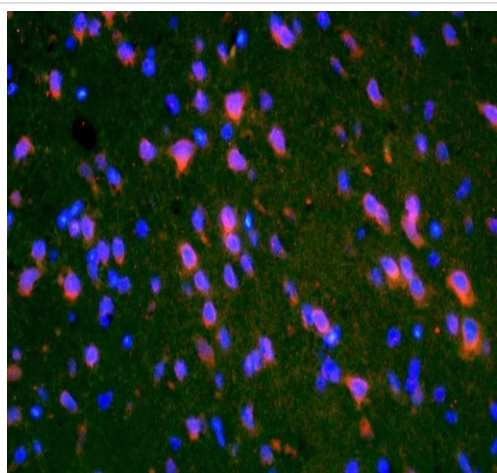
Function	May play a role in lipid transport protein in Schwann cells. May bind cholesterol.
Sequence similarities	Belongs to the calycin superfamily. Fatty-acid binding protein (FABP) family.
Domain	Forms a beta-barrel structure that accommodates hydrophobic ligands in its interior.
Cellular localization	Cytoplasm.

Images



Immunohistochemical analysis of formalin-fixed paraffin-embedded rat brain tissue sections labeling PMP2 with ab203249 at a 1/200 dilution, followed by conjugation to the secondary antibody and DAB staining.

Immunohistochemistry (Formalin/PFA-fixed paraffin-embedded sections) - Anti-PMP2 antibody (ab203249)



Immunohistochemical analysis of formalin-fixed paraffin-embedded rat brain tissue sections labeling PMP2 with ab203249 at a 1/200 dilution. The secondary antibody was a goat anti-rabbit IgG-Cy3 used at a 1/200 dilution.

Immunohistochemistry (Formalin/PFA-fixed paraffin-embedded sections) - Anti-PMP2 antibody (ab203249)

Please note: All products are "FOR RESEARCH USE ONLY. NOT FOR USE IN DIAGNOSTIC PROCEDURES"

Our Abpromise to you: Quality guaranteed and expert technical support

- Replacement or refund for products not performing as stated on the datasheet
- Valid for 12 months from date of delivery
- Response to your inquiry within 24 hours
- We provide support in Chinese, English, French, German, Japanese and Spanish
- Extensive multi-media technical resources to help you
- We investigate all quality concerns to ensure our products perform to the highest standards

If the product does not perform as described on this datasheet, we will offer a refund or replacement. For full details of the Abpromise, please visit <https://www.abcam.com/abpromise> or contact our technical team.

Terms and conditions

- Guarantee only valid for products bought direct from Abcam or one of our authorized distributors