

Product datasheet

Anti-Podoplanin antibody [8.1.1] ab92319

[5 References](#) [1 Image](#)

Overview

Product name	Anti-Podoplanin antibody [8.1.1]
Description	Syrian hamster monoclonal [8.1.1] to Podoplanin
Host species	Syrian hamster
Specificity	This antibody is designed to detect podoplanin, which is also referred to as gp38 (mouse and rat) and gp36 (human).
Tested applications	Suitable for: IHC-Fr
Species reactivity	Reacts with: Mouse
Immunogen	Tissue, cells or virus. This information is proprietary to Abcam and/or its suppliers.
General notes	<p>The Life Science industry has been in the grips of a reproducibility crisis for a number of years. Abcam is leading the way in addressing this with our range of recombinant monoclonal antibodies and knockout edited cell lines for gold-standard validation. Please check that this product meets your needs before purchasing.</p> <p>If you have any questions, special requirements or concerns, please send us an inquiry and/or contact our Support team ahead of purchase. Recommended alternatives for this product can be found below, along with publications, customer reviews and Q&As</p>

Properties

Form	Liquid
Storage instructions	Shipped at 4°C. Upon delivery aliquot and store at -20°C. Avoid repeated freeze / thaw cycles.
Storage buffer	Preservative: 0.1% Sodium azide Constituent: PBS
Purity	Protein G purified
Clonality	Monoclonal
Clone number	8.1.1
Myeloma	x63-Ag8.653
Isotype	IgG1

Applications

The Abpromise guarantee

Our **Abpromise guarantee** covers the use of ab92319 in the following tested applications.

The application notes include recommended starting dilutions; optimal dilutions/concentrations should be determined by the end user.

Application	Abreviews	Notes
IHC-Fr		

Application notes

IHC-Fr: Use at a concentration of 0.5 - 1 µg/ml.

IP: Use at an assay dependent dilution.

WB: Use at an assay dependent dilution. Predicted molecular weight: 25 kDa.

Not yet tested in other applications.

Optimal dilutions/concentrations should be determined by the end user.

Target

Function

May be involved in cell migration and/or actin cytoskeleton organization. When expressed in keratinocytes, induces changes in cell morphology with transfected cells showing an elongated shape, numerous membrane protrusions, major reorganization of the actin cytoskeleton, increased motility and decreased cell adhesion. Required for normal lung cell proliferation and alveolus formation at birth. Induces platelet aggregation. Does not have any effect on folic acid or amino acid transport. Does not function as a water channel or as a regulator of aquaporin-type water channels.

Tissue specificity

Highly expressed in placenta, lung, skeletal muscle and brain. Weakly expressed in brain, kidney and liver. In placenta, expressed on the apical plasma membrane of endothelium. In lung, expressed in alveolar epithelium. Up-regulated in colorectal tumors and expressed in 25% of early oral squamous cell carcinomas.

Sequence similarities

Belongs to the podoplanin family.

Post-translational modifications

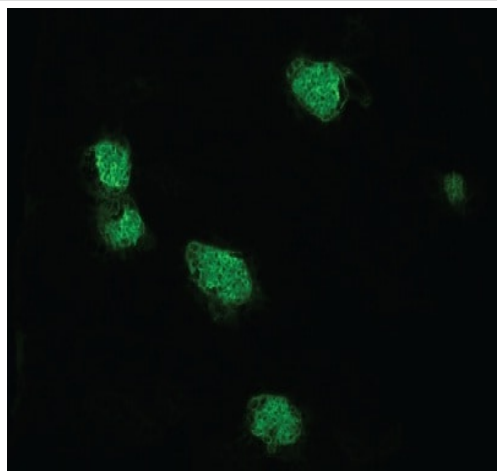
Extensively O-glycosylated. Contains sialic acid residues. O-glycosylation is necessary for platelet aggregation activity.

The N-terminus is blocked.

Cellular localization

Membrane. Cell projection > filopodium membrane. Cell projection > lamellipodium membrane. Cell projection > microvillus membrane. Cell projection > ruffle membrane. Localized to actin-rich microvilli and plasma membrane projections such as filopodia, lamellipodia and ruffles.

Images



Immunohistochemistry (Frozen sections) - Syrian hamster monoclonal [8.1.1] to Podoplanin (ab92319)

Frozen section (7.5 micron) of murine kidney were incubated with ab92319 antibody at 1ug/ml and detected with an Alexa Fluor[®]488-conjugated Goat anti-hamster IgG polyclonal used at 1:1000 dilution. Exposure time 500 ms.

Please note: All products are "FOR RESEARCH USE ONLY. NOT FOR USE IN DIAGNOSTIC PROCEDURES"

Our Abpromise to you: Quality guaranteed and expert technical support

- Replacement or refund for products not performing as stated on the datasheet
- Valid for 12 months from date of delivery
- Response to your inquiry within 24 hours
- We provide support in Chinese, English, French, German, Japanese and Spanish
- Extensive multi-media technical resources to help you
- We investigate all quality concerns to ensure our products perform to the highest standards

If the product does not perform as described on this datasheet, we will offer a refund or replacement. For full details of the Abpromise, please visit <https://www.abcam.com/abpromise> or contact our technical team.

Terms and conditions

- Guarantee only valid for products bought direct from Abcam or one of our authorized distributors