


### Anti-POLD1 antibody ab225907

[1 References](#) [2 Images](#)

#### Overview

---

<b>Product name</b>	Anti-POLD1 antibody
<b>Description</b>	Rabbit polyclonal to POLD1
<b>Host species</b>	Rabbit
<b>Tested applications</b>	<b>Suitable for:</b> IP, WB
<b>Species reactivity</b>	<b>Reacts with:</b> Mouse, Human <b>Predicted to work with:</b> Chimpanzee, Rhesus monkey 
<b>Immunogen</b>	Synthetic peptide within Human POLD1 aa 850-900. The exact sequence is proprietary. (NP_002682.2). Database link: <a href="#">P28340</a>
<b>Positive control</b>	WB: HeLa, HEK-293T, Jurkat and TCMK-1 whole cell lysates. IP: HeLa whole cell lysate.
<b>General notes</b>	<p>The Life Science industry has been in the grips of a reproducibility crisis for a number of years. Abcam is leading the way in addressing this with our range of recombinant monoclonal antibodies and knockout edited cell lines for gold-standard validation. Please check that this product meets your needs before purchasing.</p> <p>If you have any questions, special requirements or concerns, please send us an inquiry and/or contact our Support team ahead of purchase. Recommended alternatives for this product can be found below, along with publications, customer reviews and Q&amp;As</p>

#### Properties

---

<b>Form</b>	Liquid
<b>Storage instructions</b>	Shipped at 4°C. Store at +4°C short term (1-2 weeks). Upon delivery aliquot. Store at -20°C long term. Avoid freeze / thaw cycle.
<b>Storage buffer</b>	pH: 7 Preservative: 0.09% Sodium azide Constituent: Tris citrate/phosphate  pH 7 to 8
<b>Purity</b>	Immunogen affinity purified
<b>Purification notes</b>	ab225907 was affinity purified using an epitope specific to POLD1, catalytic subunit immobilized on solid support.

<b>Clonality</b>	Polyclonal
<b>Isotype</b>	IgG

## Applications

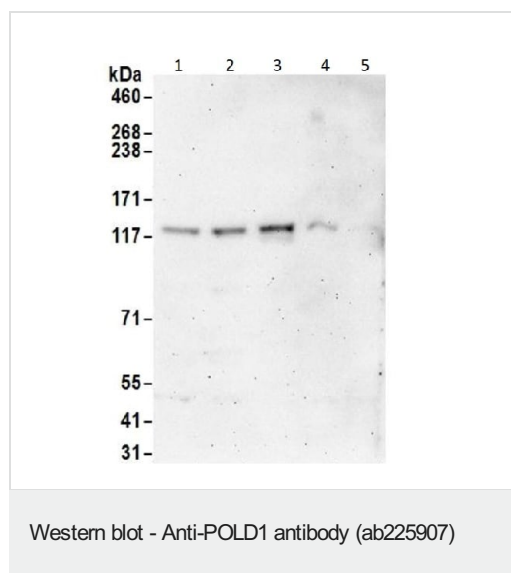
**The Abpromise guarantee** Our **Abpromise guarantee** covers the use of ab225907 in the following tested applications. The application notes include recommended starting dilutions; optimal dilutions/concentrations should be determined by the end user.

Application	Abreviews	Notes
<b>IP</b>		Use at 2-10 µg/mg of lysate.
<b>WB</b>		1/1000 - 1/5000. Predicted molecular weight: 124 kDa.

## Target

<b>Function</b>	Possesses two enzymatic activities: DNA synthesis (polymerase) and an exonucleolytic activity that degrades single stranded DNA in the 3'- to 5'-direction. Required with its accessory proteins (proliferating cell nuclear antigen (PCNA) and replication factor C (RFC) or activator 1) for leading strand synthesis. Also involved in completing Okazaki fragments initiated by the DNA polymerase alpha/primase complex.
<b>Sequence similarities</b>	Belongs to the DNA polymerase type-B family.
<b>Cellular localization</b>	Nucleus.

## Images



**All lanes :** Anti-POLD1 antibody (ab225907) at 0.4 µg/ml

**Lane 1 :** HeLa (human epithelial cell line from cervix adenocarcinoma) whole cell lysate

**Lane 2 :** HEK-293T (human epithelial cell line from embryonic kidney transformed with large T antigen) whole cell lysate

**Lane 3 :** Jurkat (human T cell leukemia cell line from peripheral blood) whole cell lysate

**Lane 4 :** TCMK-1 (mouse kidney epithelial cell line) whole cell lysate

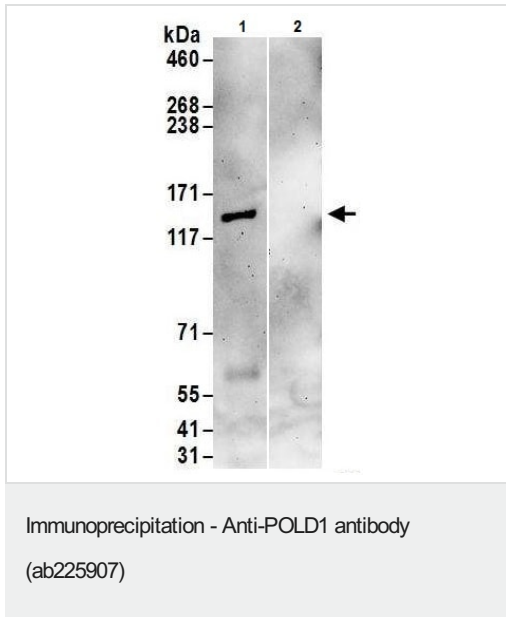
**Lane 5 :** NIH/3T3 (mouse embryo fibroblast cell line) whole cell lysate

Lysates/proteins at 50 µg per lane.

Developed using the ECL technique.

**Predicted band size:** 124 kDa

**Exposure time:** 3 minutes



POLD1, catalytic subunit was immunoprecipitated from HeLa (human epithelial cell line from cervix adenocarcinoma) whole cell lysate (1 mg for IP, 20% of IP loaded) with ab225907 at 6 µg/mg lysate. Western blot was performed from the immunoprecipitate using ab225907 at 1 µg/ml.

Lane 1: ab225907 IP in HeLa whole cell lysate.

Lane 2: Control IgG IP in HeLa whole cell lysate.

Detection: Chemiluminescence with exposure time of 3 minutes.

**Please note:** All products are "FOR RESEARCH USE ONLY. NOT FOR USE IN DIAGNOSTIC PROCEDURES"

### Our Abpromise to you: Quality guaranteed and expert technical support

- Replacement or refund for products not performing as stated on the datasheet
- Valid for 12 months from date of delivery
- Response to your inquiry within 24 hours
- We provide support in Chinese, English, French, German, Japanese and Spanish
- Extensive multi-media technical resources to help you
- We investigate all quality concerns to ensure our products perform to the highest standards

If the product does not perform as described on this datasheet, we will offer a refund or replacement. For full details of the Abpromise, please visit <https://www.abcam.com/abpromise> or contact our technical team.

### Terms and conditions

- Guarantee only valid for products bought direct from Abcam or one of our authorized distributors