


Product datasheet

Anti-PPHLN1/Periphilin-1 antibody ab69569

★★★★★ [2 Abreviews](#) [4 References](#) [2 Images](#)

Overview

Product name	Anti-PPHLN1/Periphilin-1 antibody
Description	Rabbit polyclonal to PPHLN1/Periphilin-1
Host species	Rabbit
Specificity	ab69569 detects endogenous levels of total PPHLN protein.
Tested applications	Suitable for: WB, IHC-P
Species reactivity	Reacts with: Human Predicted to work with: Mouse 
Immunogen	Synthetic peptide. This information is proprietary to Abcam and/or its suppliers.
Positive control	Extracts from COLO or 293 cells. Liver carcinoma tissue.
General notes	<p>The Life Science industry has been in the grips of a reproducibility crisis for a number of years. Abcam is leading the way in addressing this with our range of recombinant monoclonal antibodies and knockout edited cell lines for gold-standard validation. Please check that this product meets your needs before purchasing.</p> <p>If you have any questions, special requirements or concerns, please send us an inquiry and/or contact our Support team ahead of purchase. Recommended alternatives for this product can be found below, along with publications, customer reviews and Q&As</p>

Properties

Form	Liquid
Storage instructions	Shipped at 4°C. Store at -20°C. Stable for 12 months at -20°C.
Storage buffer	<p>pH: 7.40</p> <p>Preservative: 0.02% Sodium azide</p> <p>Constituents: 50% Glycerol (glycerin, glycerine), 0.87% Sodium chloride, PBS</p>
Purity	Immunogen affinity purified
Clonality	Polyclonal
Isotype	IgG

Applications

The Abpromise guarantee

Our **Abpromise guarantee** covers the use of ab69569 in the following tested applications.

The application notes include recommended starting dilutions; optimal dilutions/concentrations should be determined by the end user.

Application	Abreviews	Notes
WB	★★★★★ (1)	1/500 - 1/1000. Detects a band of approximately 53 kDa (predicted molecular weight: 53 kDa).
IHC-P		1/50 - 1/100.

Target

Function

Involved in epithelial differentiation and contributes to epidermal integrity and barrier formation.

Tissue specificity

Ubiquitous.

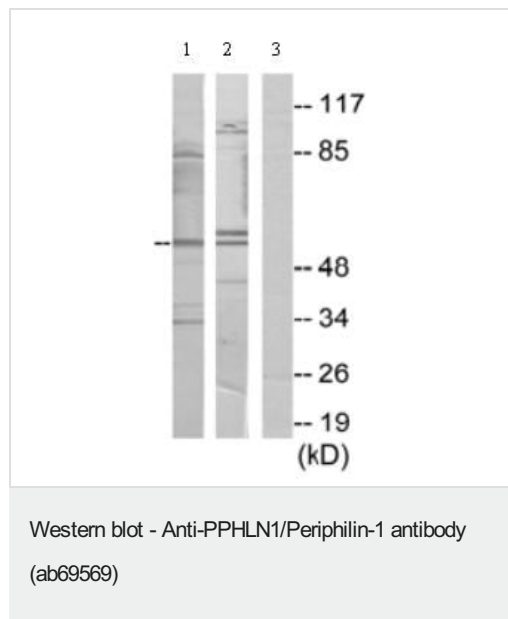
Post-translational modifications

Substrate of transglutaminase (in vitro).

Cellular localization

Nucleus. Cytoplasm. In undifferentiated keratinocytes expressed in speckle-type nuclear granules and at the nuclear membrane, but in the differentiated keratinocytes colocalized with periplakin at the cell periphery and at cell-cell junctions.

Images



All lanes : Anti-PPHLN1/Periphilin-1 antibody (ab69569) at 1/500 dilution

Lane 1 : Extracts from COLO cells

Lane 2 : Extracts from 293 cells

Lane 3 : Extracts from COLO cells with immunizing peptide at 10 µg

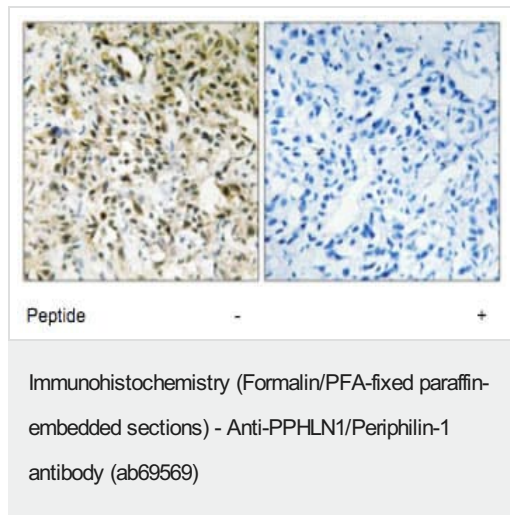
Lysates/proteins at 30 µg per lane.

Predicted band size: 53 kDa

Observed band size: 53 kDa

Additional bands at: 100 kDa, 35 kDa, 40 kDa, 55 kDa, 85 kDa.

We are unsure as to the identity of these extra bands.



Immunohistochemistry analysis of paraffin-embedded human liver carcinoma tissue using 1/50-1/100 ab69569. For the image in the right panel, the antibody was preincubated with the immunizing peptide.

Please note: All products are "FOR RESEARCH USE ONLY. NOT FOR USE IN DIAGNOSTIC PROCEDURES"

Our Abpromise to you: Quality guaranteed and expert technical support

- Replacement or refund for products not performing as stated on the datasheet
- Valid for 12 months from date of delivery
- Response to your inquiry within 24 hours
- We provide support in Chinese, English, French, German, Japanese and Spanish
- Extensive multi-media technical resources to help you
- We investigate all quality concerns to ensure our products perform to the highest standards

If the product does not perform as described on this datasheet, we will offer a refund or replacement. For full details of the Abpromise, please visit <https://www.abcam.com/abpromise> or contact our technical team.

Terms and conditions

- Guarantee only valid for products bought direct from Abcam or one of our authorized distributors