

Product datasheet

Anti-PPIL1 antibody [EPR10251] α b154188

Recombinant RabMAb

3 Images

Overview

Product name	Anti-PPIL1 antibody [EPR10251]
Description	Rabbit monoclonal [EPR10251] to PPIL1
Host species	Rabbit
Tested applications	Suitable for: Flow Cyt (Intra), WB Unsuitable for: ICC/IF, IHC-P or IP
Species reactivity	Reacts with: Human
Immunogen	Synthetic peptide. This information is proprietary to Abcam and/or its suppliers.
Positive control	K562 cells and cell lysate, HeLa cell lysate
General notes	<p>This product is a recombinant monoclonal antibody, which offers several advantages including:</p> <ul style="list-style-type: none"> - High batch-to-batch consistency and reproducibility - Improved sensitivity and specificity - Long-term security of supply - Animal-free production <p>For more information see here.</p> <p>Our RabMAb[®] technology is a patented hybridoma-based technology for making rabbit monoclonal antibodies. For details on our patents, please refer to RabMAb[®] patents.</p> <p>Mouse, Rat: We have preliminary internal testing data to indicate this antibody may not react with these species. Please contact us for more information.</p>

Properties

Form	Liquid
Storage instructions	Shipped at 4°C. Store at -20°C.
Storage buffer	<p>pH: 7.2</p> <p>Preservative: 0.01% Sodium azide</p> <p>Constituents: 9% PBS, 40% Glycerol (glycerin, glycerine), 0.05% BSA, 50% Tissue culture supernatant</p>
Purity	Tissue culture supernatant
Clonality	Monoclonal

Clone number EPR10251

Isotype IgG

Applications

The Abpromise guarantee Our **Abpromise guarantee** covers the use of ab154188 in the following tested applications. The application notes include recommended starting dilutions; optimal dilutions/concentrations should be determined by the end user.

Application	Abreviews	Notes
Flow Cyt (Intra)		1/10 - 1/100. ab172730 - Rabbit monoclonal IgG, is suitable for use as an isotype control with this antibody.
WB		1/1000 - 1/10000. Predicted molecular weight: 18 kDa.

Application notes Is unsuitable for ICC/IF, IHC-P or IP.

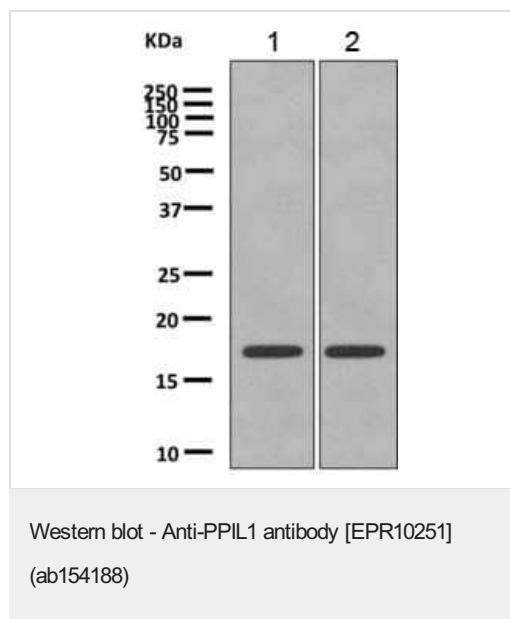
Target

Function PPases accelerate the folding of proteins. It catalyzes the cis-trans isomerization of proline imidic peptide bonds in oligopeptides. May be involved in pre-mRNA splicing.

Tissue specificity Ubiquitous, with the most abundant expression in heart and skeletal muscle.

Sequence similarities Belongs to the cyclophilin-type PPase family. PPIL1 subfamily.
Contains 1 PPase cyclophilin-type domain.

Images



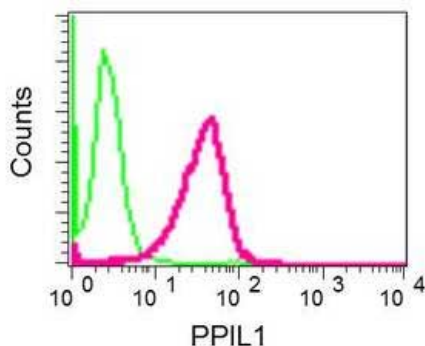
All lanes : Anti-PPIL1 antibody [EPR10251] (ab154188) at 1/1000 dilution

Lane 1 : K562 cell lysates

Lane 2 : HeLa cell lysates

Lysates/proteins at 10 µg per lane.

Predicted band size: 18 kDa



Intracellular flow cytometric analysis of permeabilized HeLa cells labeling PPIL1 using ab154188 at 1/10 dilution (red) or rabbit IgG negative control antibody (green).

Flow Cytometry (Intracellular) - Anti-PPIL1 antibody [EPR10251] (ab154188)

Why choose a recombinant antibody?



Research with confidence
Consistent and reproducible results



Long-term and scalable supply
Recombinant technology



Success from the first experiment
Confirmed specificity



Ethical standards compliant
Animal-free production

Anti-PPIL1 antibody [EPR10251] (ab154188)

Please note: All products are "FOR RESEARCH USE ONLY. NOT FOR USE IN DIAGNOSTIC PROCEDURES"

Our Abpromise to you: Quality guaranteed and expert technical support

- Replacement or refund for products not performing as stated on the datasheet
- Valid for 12 months from date of delivery
- Response to your inquiry within 24 hours
- We provide support in Chinese, English, French, German, Japanese and Spanish
- Extensive multi-media technical resources to help you
- We investigate all quality concerns to ensure our products perform to the highest standards

If the product does not perform as described on this datasheet, we will offer a refund or replacement. For full details of the Abpromise, please visit <https://www.abcam.com/abpromise> or contact our technical team.

Terms and conditions

- Guarantee only valid for products bought direct from Abcam or one of our authorized distributors