


Anti-PPM1G antibody ab70794

[3 References](#) [3 Images](#)

Overview

Product name	Anti-PPM1G antibody
Description	Rabbit polyclonal to PPM1G
Host species	Rabbit
Tested applications	Suitable for: IHC-P, WB, IP
Species reactivity	Reacts with: Mouse, Human Predicted to work with: Rabbit, Horse, Chicken, Guinea pig, Cow, Dog, Turkey, Pig, Xenopus laevis, Chimpanzee, Rhesus monkey, Gorilla, Orangutan, Xenopus tropicalis, Platypus 
Immunogen	Synthetic peptide corresponding to a region between residue 400 and 450 of human PPM1G. (NP_817092.1)
Positive control	HeLa and 293T whole cell lysates.
General notes	<p>The Life Science industry has been in the grips of a reproducibility crisis for a number of years. Abcam is leading the way in addressing this with our range of recombinant monoclonal antibodies and knockout edited cell lines for gold-standard validation. Please check that this product meets your needs before purchasing.</p> <p>If you have any questions, special requirements or concerns, please send us an inquiry and/or contact our Support team ahead of purchase. Recommended alternatives for this product can be found below, along with publications, customer reviews and Q&As</p>

Properties

Form	Liquid
Storage instructions	Shipped at 4°C. Upon delivery aliquot and store at -20°C. Avoid freeze / thaw cycles.
Storage buffer	pH: 6.8 Preservative: 0.09% Sodium azide Constituents: 0.1% BSA, Tris buffered saline
Purity	Immunogen affinity purified
Clonality	Polyclonal
Isotype	IgG

Applications

The Abpromise guarantee

Our **Abpromise guarantee** covers the use of ab70794 in the following tested applications.

The application notes include recommended starting dilutions; optimal dilutions/concentrations should be determined by the end user.

Application	Abreviews	Notes
IHC-P		1/200 - 1/1000. Perform heat mediated antigen retrieval with citrate buffer pH 6 before commencing with IHC staining protocol.
WB		1/2000 - 1/10000. Detects a band of approximately 70 kDa (predicted molecular weight: 61 kDa).
IP		Use at 2-5 µg/mg of lysate.

Target

Tissue specificity

Widely expressed. Most abundant in testis, skeletal muscle, and heart.

Sequence similarities

Belongs to the PP2C family.

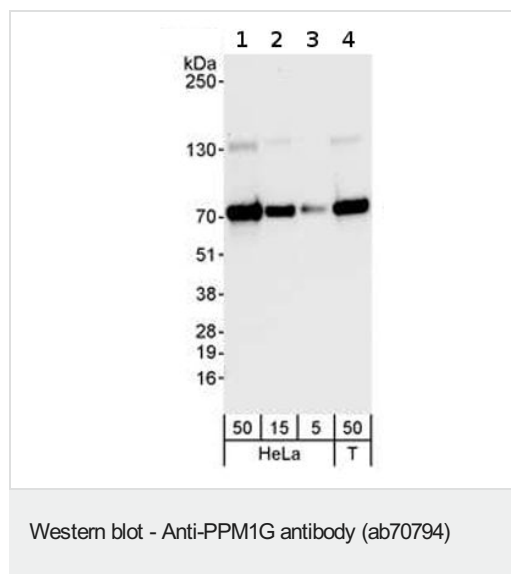
Post-translational modifications

Phosphorylated upon DNA damage, probably by ATM or ATR.

Cellular localization

Cytoplasm.

Images



All lanes : Anti-PPM1G antibody (ab70794) at 0.04 µg/ml

Lane 1 : HeLa whole cell lysate at 50 µg

Lane 2 : HeLa whole cell lysate at 15 µg

Lane 3 : HeLa whole cell lysate at 5 µg

Lane 4 : 293T whole cell lysate at 50 µg

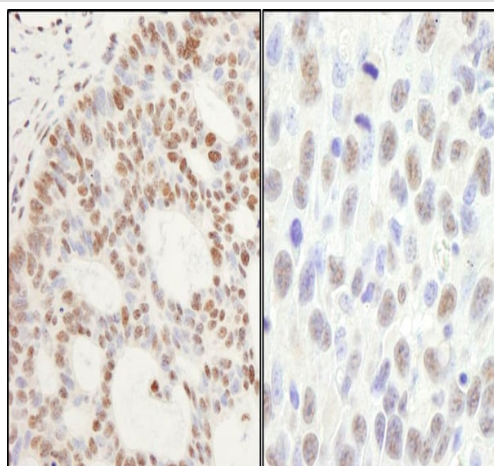
Developed using the ECL technique.

Predicted band size: 61 kDa

Observed band size: 70 kDa

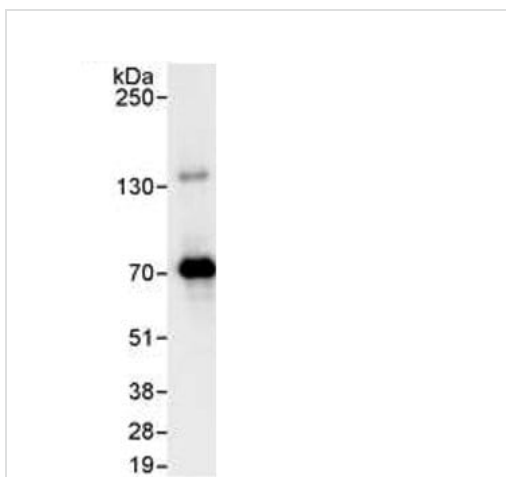
Additional bands at: 130 kDa. We are unsure as to the identity of these extra bands.

Exposure time: 10 seconds



Immunohistochemistry (Formalin/PFA-fixed paraffin-embedded sections) - Anti-PPM1G antibody (ab70794)

Immunohistochemistry (Formalin/PFA-fixed paraffin-embedded sections) analysis of human skin basal cell carcinoma (left) and mouse squamous cell carcinoma (right) tissues labelling PPM1G with ab70794 at 1/1000 (0.2µg/ml) and 1/200 (1µg/ml). Detection: DAB.



Immunoprecipitation - Anti-PPM1G antibody (ab70794)

HeLa whole cell lysate (1 mg for IP, 20% of IP loaded) with ab70794 at 1 µg/ml for WB, subsequent to being used for IP at 3 µg/mg lysate. Detection: Chemiluminescence with an exposure time of 1 second.

Please note: All products are "FOR RESEARCH USE ONLY. NOT FOR USE IN DIAGNOSTIC PROCEDURES"

Our Abpromise to you: Quality guaranteed and expert technical support

- Replacement or refund for products not performing as stated on the datasheet
- Valid for 12 months from date of delivery
- Response to your inquiry within 24 hours
- We provide support in Chinese, English, French, German, Japanese and Spanish
- Extensive multi-media technical resources to help you

- We investigate all quality concerns to ensure our products perform to the highest standards

If the product does not perform as described on this datasheet, we will offer a refund or replacement. For full details of the Abpromise, please visit <https://www.abcam.com/abpromise> or contact our technical team.

Terms and conditions

- Guarantee only valid for products bought direct from Abcam or one of our authorized distributors