

Product datasheet

Anti-PPP2R5E antibody [EPR17146] α b198290

KO VALIDATED Recombinant RabMAB

7 Images

Overview

Product name	Anti-PPP2R5E antibody [EPR17146]
Description	Rabbit monoclonal [EPR17146] to PPP2R5E
Host species	Rabbit
Tested applications	Suitable for: WB, ICC/IF
Species reactivity	Reacts with: Mouse, Rat, Human
Immunogen	Synthetic peptide. This information is proprietary to Abcam and/or its suppliers.
Positive control	WB: HeLa, HEK-293T, Daudi, C6 and NIH/3T3 cell lysates; Human pancreas and fetal brain tissue lysate; Mouse and rat brain tissue lysates. ICC/IF: C6 cells.
General notes	<p>This product is a recombinant monoclonal antibody, which offers several advantages including:</p> <ul style="list-style-type: none">- High batch-to-batch consistency and reproducibility- Improved sensitivity and specificity- Long-term security of supply- Animal-free production <p>For more information see here.</p> <p>Our RabMAB[®] technology is a patented hybridoma-based technology for making rabbit monoclonal antibodies. For details on our patents, please refer to RabMAB[®] patents.</p>

Properties

Form	Liquid
Storage instructions	Shipped at 4°C. Store at +4°C short term (1-2 weeks). Upon delivery aliquot. Store at -20°C long term. Avoid freeze / thaw cycle.
Storage buffer	pH: 7.2 Preservative: 0.01% Sodium azide Constituents: 59% PBS, 40% Glycerol (glycerin, glycerine), 0.05% BSA
Purity	Protein A purified
Clonality	Monoclonal
Clone number	EPR17146
Isotype	IgG

Applications

The Abpromise guarantee

Our **Abpromise guarantee** covers the use of ab198290 in the following tested applications.

The application notes include recommended starting dilutions; optimal dilutions/concentrations should be determined by the end user.

Application	Abreviews	Notes
WB		1/1000. Detects a band of approximately 55 kDa (predicted molecular weight: 55 kDa).
ICC/IF		1/500.

Target

Function

The B regulatory subunit might modulate substrate selectivity and catalytic activity, and also might direct the localization of the catalytic enzyme to a particular subcellular compartment.

Sequence similarities

Belongs to the phosphatase 2A regulatory subunit B56 family.

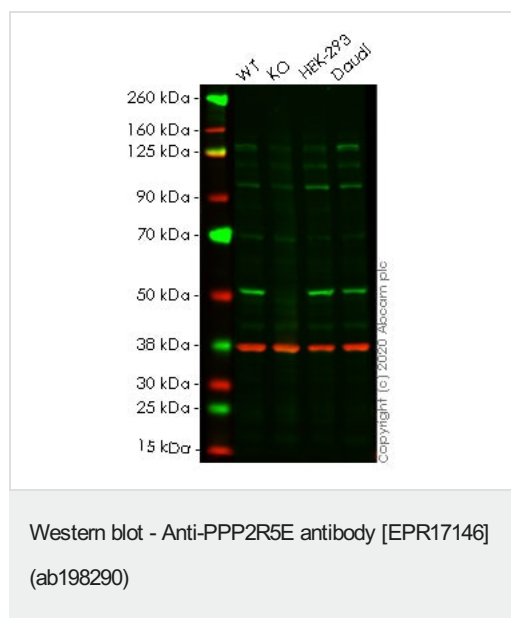
Post-translational modifications

Phosphorylated on serine residues.

Cellular localization

Cytoplasm.

Images



All lanes : Anti-PPP2R5E antibody [EPR17146] (ab198290) at 1/1000 dilution

Lane 1 : Wild-type HeLa cell lysate

Lane 2 : PPP2R5E knockout HeLa cell lysate

Lane 3 : HEK-293 cell lysate

Lane 4 : Daudi cell lysate

Lysates/proteins at 20 µg per lane.

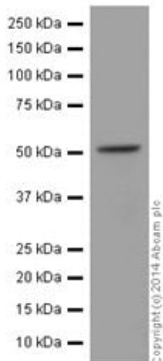
Performed under reducing conditions.

Predicted band size: 55 kDa

Lanes 1-4: Merged signal (red and green). Green - ab198290 observed at 55 kDa. Red - loading control **ab8245** observed at 37 kDa.

ab198290 Anti-PPP2R5E antibody [EPR17146] was shown to

specifically react with PPP2R5E in wild-type HeLa cells. Loss of signal was observed when knockout cell line [ab265637](#) (knockout cell lysate [ab258135](#)) was used. Wild-type and PPP2R5E knockout samples were subjected to SDS-PAGE. ab198290 and Anti-GAPDH antibody [6C5] - Loading Control ([ab8245](#)) were incubated overnight at 4°C at 1 in 1000 dilution and 1 in 20000 dilution respectively. Blots were developed with Goat anti-Rabbit IgG H&L (IRDye® 800CW) preadsorbed ([ab216773](#)) and Goat anti-Mouse IgG H&L (IRDye® 680RD) preadsorbed ([ab216776](#)) secondary antibodies at 1 in 20000 dilution for 1 hour at room temperature before imaging.



Western blot - Anti-PPP2R5E antibody [EPR17146] (ab198290)

Anti-PPP2R5E antibody [EPR17146] (ab198290) at 1/1000 dilution + 293 (Human epithelial cells from embryonic kidney) cell lysate at 20 µg

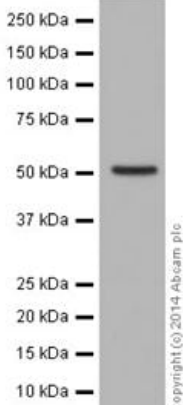
Secondary

Goat Anti-Rabbit IgG, (H+L), Peroxidase conjugated at 1/1000 dilution

Predicted band size: 55 kDa

Observed band size: 55 kDa

Blocking/dilution buffer: 5% NFDm/TBST.



Western blot - Anti-PPP2R5E antibody [EPR17146] (ab198290)

Anti-PPP2R5E antibody [EPR17146] (ab198290) at 1/1000 dilution + Human fetal brain lysate at 10 µg

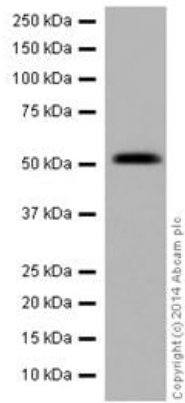
Secondary

Anti-Rabbit IgG (HRP), specific to the non-reduced form of IgG at 1/1000 dilution

Predicted band size: 55 kDa

Observed band size: 55 kDa

Blocking/dilution buffer: 5% NFDm/TBST.



Western blot - Anti-PPP2R5E antibody [EPR17146] (ab198290)

Anti-PPP2R5E antibody [EPR17146] (ab198290) at 1/1000 dilution + Human pancreas lysate at 10 μ g

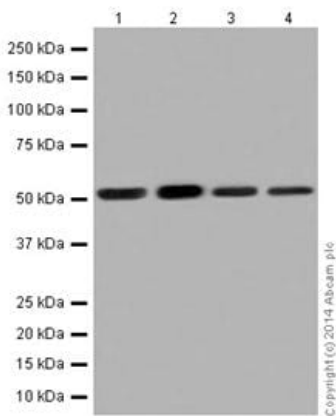
Secondary

Anti-Rabbit IgG (HRP), specific to the non-reduced form of IgG at 1/1000 dilution

Predicted band size: 55 kDa

Observed band size: 55 kDa

Blocking/dilution buffer: 5% NFDm/TBST.



Western blot - Anti-PPP2R5E antibody [EPR17146] (ab198290)

All lanes : Anti-PPP2R5E antibody [EPR17146] (ab198290) at 1/1000 dilution

Lane 1 : Mouse brain lysate

Lane 2 : Rat brain lysate

Lane 3 : C6 (Rat glial tumor cell) lysate

Lane 4 : NIH/3T3 (Mouse embryo fibroblast cells) lysate

Lysates/proteins at 10 μ g per lane.

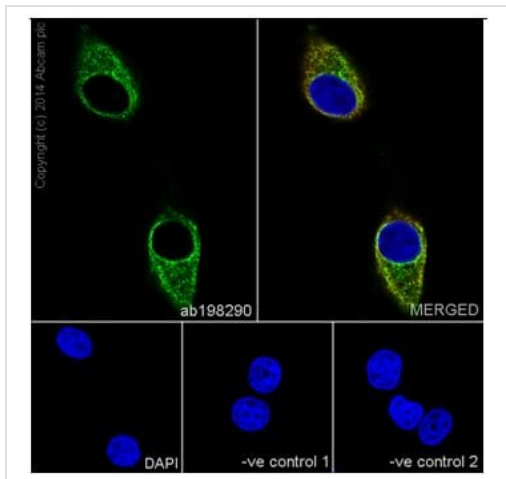
Secondary

All lanes : Goat Anti-Rabbit IgG, (H+L), Peroxidase conjugated at 1/1000 dilution

Predicted band size: 55 kDa

Observed band size: 55 kDa

Blocking/dilution buffer: 5% NFDm/TBST.







Immunocytochemistry/ Immunofluorescence - Anti-PPP2R5E antibody [EPR17146] (ab198290)

Immunofluorescent analysis of 100% methanol-fixed, 0.1% Triton X-100 permeabilized C6 (Rat glial tumor) cells labeling PPP2R5E with ab198290 at 1/500 dilution, followed by Goat anti-rabbit IgG (Alexa Fluor® 488) (**ab150077**) secondary antibody at 1/500 dilution (green). Cytoplasm staining on C6 cell line is observed. The nuclear counterstain is DAPI (blue). Tubulin is detected with **ab7291** (anti-Tubulin mouse mAb) at 1/1000 dilution and **ab150120** (AlexaFluor®594 Goat anti-Mouse secondary) at 1/500 dilution (red).

The negative controls are as follows:-

- ve control 1 - ab198290 at 1/500 dilution followed by **ab150120** (AlexaFluor®594 Goat anti-Mouse secondary) at 1/500 dilution.
- ve control 2. - **ab7291** (anti-Tubulin mouse mAb) at 1/1000 dilution followed by **ab150077** (Alexa Fluor®488 Goat Anti-Rabbit IgG H&L) at 1/500 dilution.

Why choose a recombinant antibody?

 Research with confidence Consistent and reproducible results	 Long-term and scalable supply Recombinant technology
 Success from the first experiment Confirmed specificity	 Ethical standards compliant Animal-free production

Anti-PPP2R5E antibody [EPR17146] (ab198290)

Please note: All products are "FOR RESEARCH USE ONLY. NOT FOR USE IN DIAGNOSTIC PROCEDURES"

Our Abpromise to you: Quality guaranteed and expert technical support

- Replacement or refund for products not performing as stated on the datasheet
- Valid for 12 months from date of delivery
- Response to your inquiry within 24 hours

- We provide support in Chinese, English, French, German, Japanese and Spanish
- Extensive multi-media technical resources to help you
- We investigate all quality concerns to ensure our products perform to the highest standards

If the product does not perform as described on this datasheet, we will offer a refund or replacement. For full details of the Abpromise, please visit <https://www.abcam.com/abpromise> or contact our technical team.

Terms and conditions

- Guarantee only valid for products bought direct from Abcam or one of our authorized distributors