

Product datasheet

Anti-PPP4R2 antibody ab70631

[2 References](#) [3 Images](#)

Overview

| | |
|----------------------------|-----------------------------------------------------------------------------------------------------------------------------------|
| Product name | Anti-PPP4R2 antibody |
| Description | Rabbit polyclonal to PPP4R2 |
| Host species | Rabbit |
| Tested applications | Suitable for: IHC-P, WB, IP |
| Species reactivity | Reacts with: Mouse, Human Predicted to work with: Horse, Cow, Pig, Chimpanzee, Rhesus monkey, Gorilla, Orangutan |



| | |
|------------------|--------------------------------------------------------------------------------------------------------------------------------|
| Immunogen | Synthetic peptide corresponding to a region between residue 370 and the C-terminus (residue 417) of Human PPP4R2 (NP_777567.1) |
|------------------|--------------------------------------------------------------------------------------------------------------------------------|

| | |
|----------------------|-----------------------------------------------------------------------------------------------------------------------------------------------------------------------------------------------------------------------------------------------------------------------------------------------------------------------------------------------------------------------------------------------------------------------------------------------------------------------------------------------------------------------------------------------------------------------------------------------------------------|
| General notes | <p>The Life Science industry has been in the grips of a reproducibility crisis for a number of years. Abcam is leading the way in addressing this with our range of recombinant monoclonal antibodies and knockout edited cell lines for gold-standard validation. Please check that this product meets your needs before purchasing.</p> <p>If you have any questions, special requirements or concerns, please send us an inquiry and/or contact our Support team ahead of purchase. Recommended alternatives for this product can be found below, along with publications, customer reviews and Q&As</p> |
|----------------------|-----------------------------------------------------------------------------------------------------------------------------------------------------------------------------------------------------------------------------------------------------------------------------------------------------------------------------------------------------------------------------------------------------------------------------------------------------------------------------------------------------------------------------------------------------------------------------------------------------------------|

Properties

| | |
|-----------------------------|---------------------------------------------------------------------------------------------|
| Form | Liquid |
| Storage instructions | Shipped at 4°C. Upon delivery aliquot and store at -20°C. Avoid freeze / thaw cycles. |
| Storage buffer | pH: 6.8 Preservative: 0.09% Sodium azide Constituents: 0.1% BSA, Tris buffered saline |
| Purity | Immunogen affinity purified |
| Clonality | Polyclonal |
| Isotype | IgG |

Applications

The Abpromise guarantee

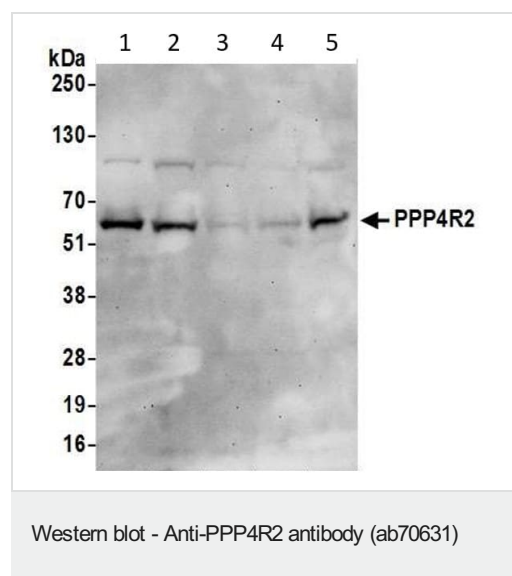
Our **Abpromise guarantee** covers the use of ab70631 in the following tested applications.

The application notes include recommended starting dilutions; optimal dilutions/concentrations should be determined by the end user.

| Application | Abreviews | Notes |
|-------------|-----------|------------------------------------------------------------------------------------------------|
| IHC-P | | 1/200. |
| WB | | 1/2000 - 1/10000. Detects a band of approximately 65 kDa (predicted molecular weight: 47 kDa). |
| IP | | Use at 2-5 µg/mg of lysate. |

Target

Images



All lanes : Anti-PPP4R2 antibody (ab70631) at 0.1 µg/ml

Lane 1 : HeLa whole cell lysate

Lane 2 : HEK293T whole cell lysate

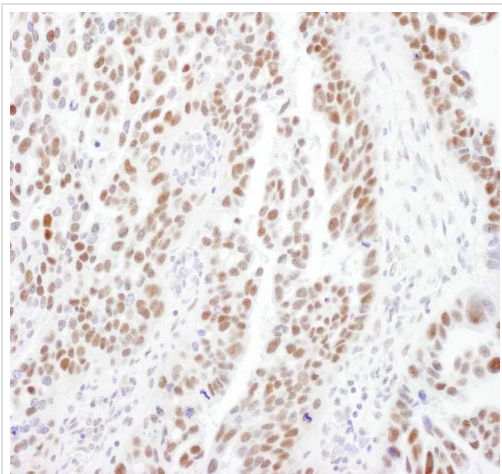
Lane 3 : Jurkat whole cell lysate

Lane 4 : TCMK whole cell lysate

Lane 5 : NIH 3T3 whole cell lysate

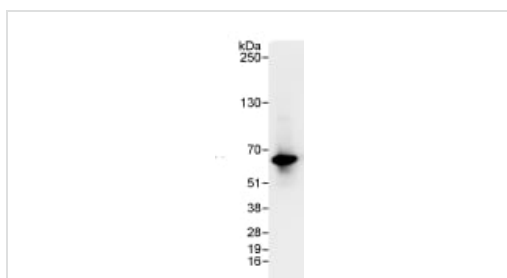
Lysates/proteins at 50 µg per lane.

Predicted band size: 47 kDa



Immunohistochemical analysis of human ovarian cancer tissue, labelling PPP4R2 with ab70631 at 1/200 dilution.

Immunohistochemistry (Formalin/PFA-fixed paraffin-embedded sections) - Anti-PPP4R2 antibody (ab70631)



Detection of Human PPP4R2 by Western Blot of Immunoprecipitate. ab70631 at 1µg/ml staining PPP4R2 in HeLa whole cell lysate immunoprecipitated using ab70631 at 3µg/mg lysate (1 mg/IP; 20% of IP loaded/lane). Detection: chemiluminescence with exposure time of 10 seconds.

Immunoprecipitation - Anti-PPP4R2 antibody (ab70631)

Please note: All products are "FOR RESEARCH USE ONLY. NOT FOR USE IN DIAGNOSTIC PROCEDURES"

Our Abpromise to you: Quality guaranteed and expert technical support

- Replacement or refund for products not performing as stated on the datasheet
- Valid for 12 months from date of delivery
- Response to your inquiry within 24 hours
- We provide support in Chinese, English, French, German, Japanese and Spanish
- Extensive multi-media technical resources to help you
- We investigate all quality concerns to ensure our products perform to the highest standards

If the product does not perform as described on this datasheet, we will offer a refund or replacement. For full details of the Abpromise, please visit <https://www.abcam.com/abpromise> or contact our technical team.

Terms and conditions

- Guarantee only valid for products bought direct from Abcam or one of our authorized distributors