


## Product datasheet

### Anti-PRD antibody ab111851

2 Images

#### Overview

<b>Product name</b>	Anti-PRD antibody
<b>Description</b>	Rabbit polyclonal to PRD
<b>Host species</b>	Rabbit
<b>Tested applications</b>	<b>Suitable for:</b> WB, IHC-P
<b>Species reactivity</b>	<b>Reacts with:</b> Human <b>Predicted to work with:</b> Mouse, Rat 
<b>Immunogen</b>	Recombinant fragment corresponding to Human PRD aa 22-290. (BC028295)
<b>General notes</b>	<p>The Life Science industry has been in the grips of a reproducibility crisis for a number of years. Abcam is leading the way in addressing this with our range of recombinant monoclonal antibodies and knockout edited cell lines for gold-standard validation. Please check that this product meets your needs before purchasing.</p> <p>If you have any questions, special requirements or concerns, please send us an inquiry and/or contact our Support team ahead of purchase. Recommended alternatives for this product can be found below, along with publications, customer reviews and Q&amp;As</p>

#### Properties

<b>Form</b>	Lyophilized:Reconstitute in 200ul Sterile Distilled Water.
<b>Storage instructions</b>	Shipped at 4°C. Upon delivery aliquot and store at -20°C. Avoid repeated freeze / thaw cycles.
<b>Storage buffer</b>	pH: 7.20 Preservative: 0.02% Sodium azide Constituents: PBS, 1% BSA
<b>Purity</b>	Immunogen affinity purified
<b>Purification notes</b>	ab111851 is purified by a peptide affinity column.
<b>Clonality</b>	Polyclonal
<b>Isotype</b>	IgG

#### Applications

The **Abpromise guarantee** Our **Abpromise guarantee** covers the use of ab111851 in the following tested applications.

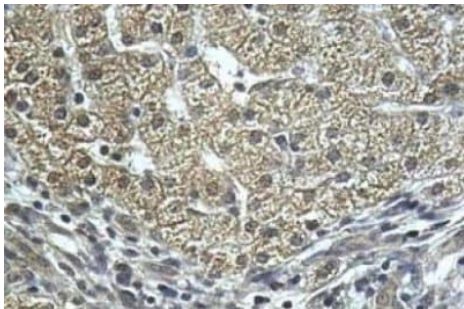
The application notes include recommended starting dilutions; optimal dilutions/concentrations should be determined by the end user.

Application	Abreviews	Notes
WB		1/500 - 1/1000. Predicted molecular weight: 55 kDa.
IHC-P		1/100 - 1/500.

## Target

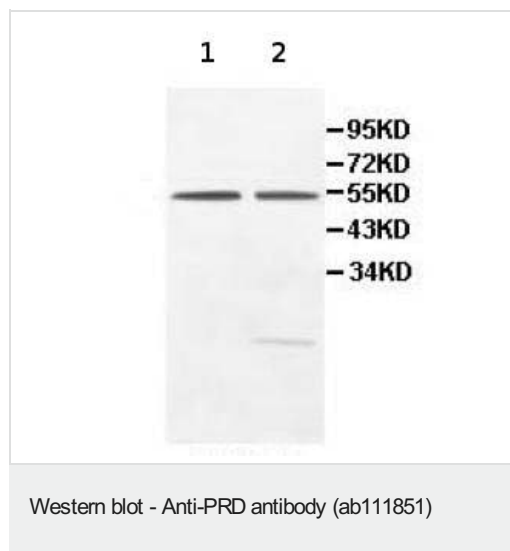
<b>Function</b>	Splits dipeptides with a prolyl or hydroxyprolyl residue in the C-terminal position. Plays an important role in collagen metabolism because the high level of iminoacids in collagen.
<b>Involvement in disease</b>	Defects in PEPD are a cause of prolydase deficiency (PD) [MIM:170100]. Prolidase deficiency is an autosomal recessive disorder associated with iminodipeptiduria. The clinical phenotype includes skin ulcers, mental retardation, recurrent infections, and a characteristic facies. These features, however are incompletely penetrant and highly variable in both age of onset and severity. There is a tight linkage between the polymorphisms of prolidase and the myotonic dystrophy trait.
<b>Sequence similarities</b>	Belongs to the peptidase M24B family. Eukaryotic-type prolidase subfamily.

## Images



ab111851, at a 1/100 dilution, staining PRD in Formalin-fixed, Paraffin-embedded Human fetal liver tissue by Immunohistochemistry.

Immunohistochemistry (Formalin/PFA-fixed paraffin-embedded sections) - Anti-PRD antibody (ab111851)



**All lanes :** Anti-PRD antibody (ab111851) at 1/500 dilution

**Lane 1 :** HeLa cell lysate

**Lane 2 :** HepG2 cell lysate

**Predicted band size:** 55 kDa

**Please note:** All products are "FOR RESEARCH USE ONLY. NOT FOR USE IN DIAGNOSTIC PROCEDURES"

### Our Abpromise to you: Quality guaranteed and expert technical support

---

- Replacement or refund for products not performing as stated on the datasheet
- Valid for 12 months from date of delivery
- Response to your inquiry within 24 hours
- We provide support in Chinese, English, French, German, Japanese and Spanish
- Extensive multi-media technical resources to help you
- We investigate all quality concerns to ensure our products perform to the highest standards

If the product does not perform as described on this datasheet, we will offer a refund or replacement. For full details of the Abpromise, please visit <https://www.abcam.com/abpromise> or contact our technical team.

### Terms and conditions

---

- Guarantee only valid for products bought direct from Abcam or one of our authorized distributors