

## Product datasheet

# Anti-PRDM16 antibody ab106410

★★★★★ [9 Abreviews](#) [69 References](#) [4 Images](#)

### Overview

---

<b>Product name</b>	Anti-PRDM16 antibody
<b>Description</b>	Rabbit polyclonal to PRDM16
<b>Host species</b>	Rabbit
<b>Specificity</b>	At least four isoforms of PRDM16 are known to exist; ab106410 will recognize all four.
<b>Tested applications</b>	<b>Suitable for:</b> ICC, IHC-P, WB
<b>Species reactivity</b>	<b>Reacts with:</b> Human
<b>Immunogen</b>	Synthetic peptide corresponding to Human PRDM16 (C terminal). The immunogen is located within amino acids 1120 - 1170 of PRDM16. Database link: <a href="#">Q9HAZ2</a>
<b>Positive control</b>	WB: K562 cell lysate IHC-P: Human brain tissue ICC: Human brain cells
<b>General notes</b>	<p>The Life Science industry has been in the grips of a reproducibility crisis for a number of years. Abcam is leading the way in addressing this with our range of recombinant monoclonal antibodies and knockout edited cell lines for gold-standard validation. Please check that this product meets your needs before purchasing.</p> <p>If you have any questions, special requirements or concerns, please send us an inquiry and/or contact our Support team ahead of purchase. Recommended alternatives for this product can be found below, along with publications, customer reviews and Q&amp;As</p>

### Properties

---

<b>Form</b>	Liquid
<b>Storage instructions</b>	Shipped at 4°C. Store at +4°C short term (1-2 weeks). Store at +4°C.
<b>Storage buffer</b>	pH: 7.2 Preservative: 0.02% Sodium azide Constituent: PBS
<b>Purity</b>	Immunogen affinity purified
<b>Clonality</b>	Polyclonal
<b>Isotype</b>	IgG

### Applications

## The Abpromise guarantee

Our **Abpromise guarantee** covers the use of ab106410 in the following tested applications.

The application notes include recommended starting dilutions; optimal dilutions/concentrations should be determined by the end user.

Application	Abreviews	Notes
ICC		Use a concentration of 20 µg/ml.
IHC-P	★★★★★ (3)	Use a concentration of 2 µg/ml.
WB	★★★★★ (3)	Use a concentration of 1 µg/ml. Predicted molecular weight: 140 kDa.

## Target

### Function

Binds DNA and functions as a transcriptional regulator. Functions in the differentiation of brown adipose tissue (BAT) which is specialized in dissipating chemical energy in the form of heat in response to cold or excess feeding while white adipose tissue (WAT) is specialized in the storage of excess energy and the control of systemic metabolism. Together with CEBPB, regulates the differentiation of myoblastic precursors into brown adipose cells. Functions also as a repressor of TGF-beta signaling. Isoform 4 may regulate granulocytes differentiation.

### Tissue specificity

Expressed in uterus and kidney.

### Involvement in disease

Note=A chromosomal aberration involving PRDM16 is found in myelodysplastic syndrome (MDS) and acute myeloid leukemia (AML). Reciprocal translocation t(1;3)(p36;q21). Isoform 4 is specifically expressed in adult T-cell leukemia.

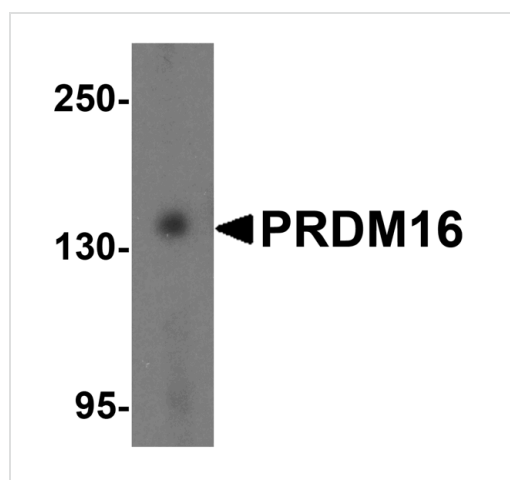
### Sequence similarities

Contains 10 C2H2-type zinc fingers.  
Contains 1 SET domain.

### Cellular localization

Nucleus.

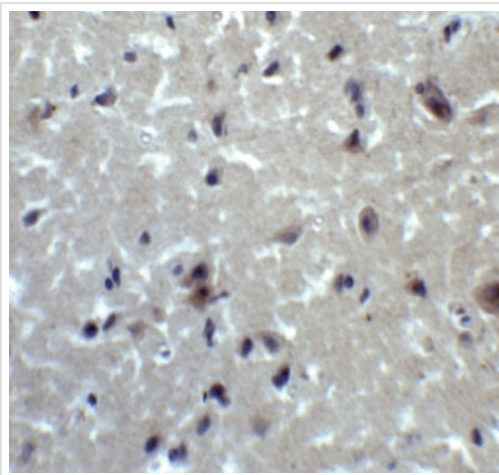
## Images



Anti-PRDM16 antibody (ab106410) at 1 µg/ml + K562 (human chronic myelogenous leukemia cell line from bone marrow) cell lysate

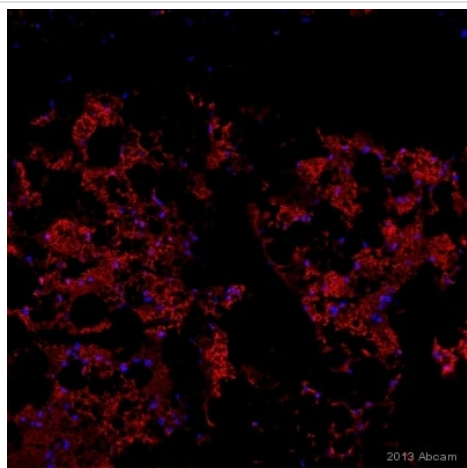
**Predicted band size:** 140 kDa

Western blot - Anti-PRDM16 antibody (ab106410)



Immunohistochemistry (Formalin/PFA-fixed paraffin-embedded sections) - Anti-PRDM16 antibody (ab106410)

Paraffin-embedded human brain tissue stained for PRDM16 using ab106410 at 2 µg/ml in immunohistochemical analysis.



Immunocytochemistry - Anti-PRDM16 antibody (ab106410)

Image is courtesy of an Abreview submitted by Lena Appelsved

ab106410 staining RAP1 in Human Brown adipocytes from supraclavicular fat tissue by ICC (Immunocytochemistry). Cells were fixed with paraformaldehyde, permeabilized with 0.3% Triton X-100 and blocked with 10% serum, 1% BSA for 1 hour at 22°C. Samples were incubated with primary antibody (2 µg/ml in 10% serum, 1% BSA, 0.3% Triton X100, PBS) for 16 hours at 4°C. A Cy3®-conjugated Donkey F(ab')<sub>2</sub> anti-rabbit IgG polyclonal (1/500) was used as the secondary antibody.

Immunocytochemistry - Anti-PRDM16 antibody (ab106410)

Immunocytochemical analysis of PRDM16 in Human Brain cells using ab106410 at 20 µg/ml.

**Please note:** All products are "FOR RESEARCH USE ONLY. NOT FOR USE IN DIAGNOSTIC PROCEDURES"

### Our Abpromise to you: Quality guaranteed and expert technical support

- Replacement or refund for products not performing as stated on the datasheet
- Valid for 12 months from date of delivery
- Response to your inquiry within 24 hours

- We provide support in Chinese, English, French, German, Japanese and Spanish
- Extensive multi-media technical resources to help you
- We investigate all quality concerns to ensure our products perform to the highest standards

If the product does not perform as described on this datasheet, we will offer a refund or replacement. For full details of the Abpromise, please visit <https://www.abcam.com/abpromise> or contact our technical team.

### **Terms and conditions**

---

- Guarantee only valid for products bought direct from Abcam or one of our authorized distributors