




Anti-PRDM1/Blimp1 antibody ab119401

[3 References](#) [1 Image](#)

Overview

Product name	Anti-PRDM1/Blimp1 antibody
Description	Rabbit polyclonal to PRDM1/Blimp1
Host species	Rabbit
Tested applications	Suitable for: WB
Species reactivity	Reacts with: Human Predicted to work with: Mouse, Rat 
Immunogen	Synthetic peptide, corresponding to a sequence around amino acids 124-128 (DTVPK) of Human PRDM1/Blimp1 (NP_001189.2).  Run BLAST with  Run BLAST with
Positive control	Jurkat an Raji cell extracts
General notes	<p>The Life Science industry has been in the grips of a reproducibility crisis for a number of years. Abcam is leading the way in addressing this with our range of recombinant monoclonal antibodies and knockout edited cell lines for gold-standard validation. Please check that this product meets your needs before purchasing.</p> <p>If you have any questions, special requirements or concerns, please send us an inquiry and/or contact our Support team ahead of purchase. Recommended alternatives for this product can be found below, along with publications, customer reviews and Q&As</p>

Properties

Form	Liquid
Storage instructions	Shipped at 4°C. Store at -20°C. Stable for 12 months at -20°C.
Storage buffer	pH: 7.40 Preservative: 0.02% Sodium azide Constituents: 48% PBS, 50% Glycerol (glycerin, glycerine), 0.88% Sodium chloride (without Mg ²⁺ and Ca ²⁺)
Purity	Immunogen affinity purified
Clonality	Polyclonal

Isotype

IgG

Applications

The Abpromise guarantee

Our **Abpromise guarantee** covers the use of ab119401 in the following tested applications.

The application notes include recommended starting dilutions; optimal dilutions/concentrations should be determined by the end user.

Application	Abreviews	Notes
WB		1/500 - 1/1000. Detects a band of approximately 95-100 kDa (predicted molecular weight: 93 kDa).

Target

Function

Transcriptional repressor that binds specifically to the PRDI element in the promoter of the beta-interferon gene (PubMed:1851123). Drives the maturation of B-lymphocytes into Ig secreting cells (PubMed:12626569).

Sequence similarities

Belongs to the class V-like SAM-binding methyltransferase superfamily.
Contains 4 C2H2-type zinc fingers.
Contains 1 SET domain.

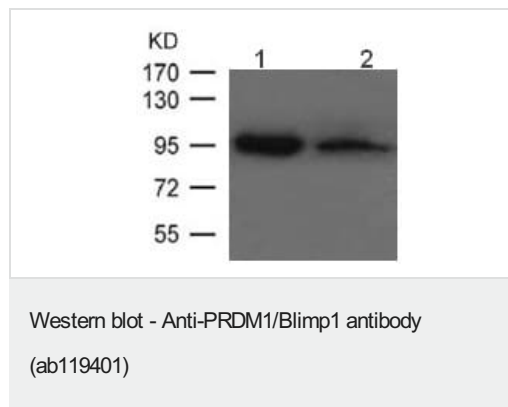
Post-translational modifications

Sumoylation at Lys-816 by PIAS1 augments transcriptional repressor activity, and is critical for plasma cell differentiation.
Ubiquitinated by the SCF(FBXO11) complex, leading to its degradation by the proteasome.

Cellular localization

Nucleus. Cytoplasm.

Images



All lanes : Anti-PRDM1/Blimp1 antibody (ab119401) at 1/500 dilution

Lane 1 : Jurkat cell extract

Lane 2 : Raji cell extract

Predicted band size: 93 kDa

Please note: All products are "FOR RESEARCH USE ONLY. NOT FOR USE IN DIAGNOSTIC PROCEDURES"

Our Abpromise to you: Quality guaranteed and expert technical support

- Replacement or refund for products not performing as stated on the datasheet
- Valid for 12 months from date of delivery

- Response to your inquiry within 24 hours
- We provide support in Chinese, English, French, German, Japanese and Spanish
- Extensive multi-media technical resources to help you
- We investigate all quality concerns to ensure our products perform to the highest standards

If the product does not perform as described on this datasheet, we will offer a refund or replacement. For full details of the Abpromise, please visit <https://www.abcam.com/abpromise> or contact our technical team.

Terms and conditions

- Guarantee only valid for products bought direct from Abcam or one of our authorized distributors