


Anti-PREP1 antibody ab154587

3 Images

Overview

Product name	Anti-PREP1 antibody
Description	Rabbit polyclonal to PREP1
Host species	Rabbit
Tested applications	Suitable for: WB, ICC/IF, IP
Species reactivity	Reacts with: Human Predicted to work with: Mouse, Rat, Cow 
Immunogen	Recombinant fragment corresponding to Human PREP1 aa 201-436. Database link: P55347
Positive control	WB: HepG2 nuclear lysate; IP: HeLa cell lysate; ICC/IF: HeLa cell lysate;
General notes	Keep as concentrated solution. The Life Science industry has been in the grips of a reproducibility crisis for a number of years. Abcam is leading the way in addressing this with our range of recombinant monoclonal antibodies and knockout edited cell lines for gold-standard validation. Please check that this product meets your needs before purchasing. If you have any questions, special requirements or concerns, please send us an inquiry and/or contact our Support team ahead of purchase. Recommended alternatives for this product can be found below, along with publications, customer reviews and Q&As

Properties

Form	Liquid
Storage instructions	Shipped at 4°C. Upon delivery aliquot and store at -20°C or -80°C. Avoid repeated freeze / thaw cycles.
Storage buffer	pH: 7.00 Preservative: 0.01% Thimerosal (merthiolate) Constituents: 79.99% PBS, 20% Glycerol (glycerin, glycerine)
Purity	Immunogen affinity purified
Clonality	Polyclonal
Isotype	IgG

Applications

The Abpromise guarantee

Our **Abpromise guarantee** covers the use of ab154587 in the following tested applications.

The application notes include recommended starting dilutions; optimal dilutions/concentrations should be determined by the end user.

Application	Abreviews	Notes
WB		1/500 - 1/3000. Predicted molecular weight: 48 kDa.
ICC/IF		1/100 - 1/1000.
IP		1/100 - 1/1000.

Target

Tissue specificity

Ubiquitous. Isoform 2 is expressed in all examined tissues except in bone marrow.

Sequence similarities

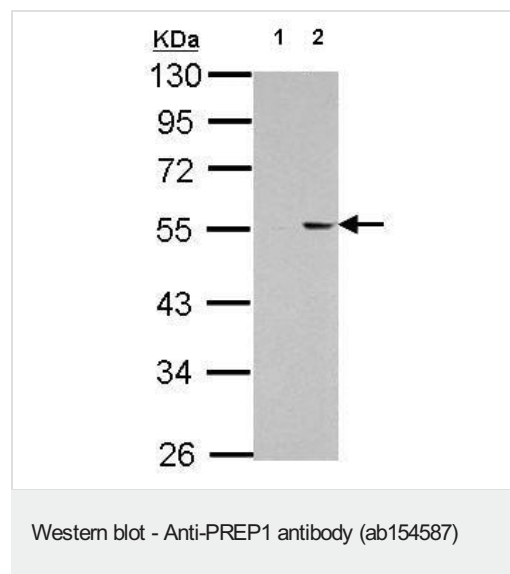
Belongs to the TALE/MEIS homeobox family.

Contains 1 homeobox DNA-binding domain.

Cellular localization

Nucleus.

Images



All lanes : Anti-PREP1 antibody (ab154587) at 1/2000 dilution

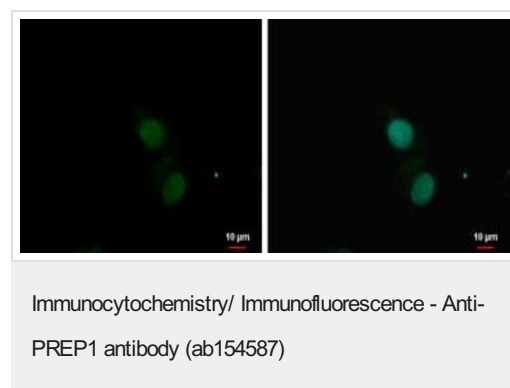
Lane 1 : HepG2 whole cell lysate

Lane 2 : HepG2 nuclear lysate

Lysates/proteins at 30 µg per lane.

Predicted band size: 48 kDa

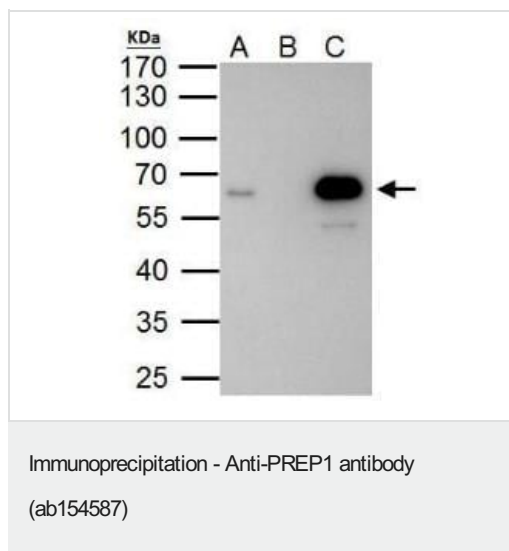
10% SDS PAGE



HepG2 cells were fixed in 4% paraformaldehyde at RT for 15 min.

They were stained using ab154587 diluted at 1/1000 (green).

Nuclear staining Hoechst 33342 staining (blue).



HeLa whole cell lysate/extract

A. 40 µg HeLa whole cell lysate/extract

B. Control with 2 µg of preimmune rabbit IgG

C. Immunoprecipitation of PREP1 protein by 2 µg of ab154587

Western Blot carried out by ab154587 at a 1/1000 dilution.

Please note: All products are "FOR RESEARCH USE ONLY. NOT FOR USE IN DIAGNOSTIC PROCEDURES"

Our Abpromise to you: Quality guaranteed and expert technical support

- Replacement or refund for products not performing as stated on the datasheet
- Valid for 12 months from date of delivery
- Response to your inquiry within 24 hours
- We provide support in Chinese, English, French, German, Japanese and Spanish
- Extensive multi-media technical resources to help you
- We investigate all quality concerns to ensure our products perform to the highest standards

If the product does not perform as described on this datasheet, we will offer a refund or replacement. For full details of the Abpromise, please visit <https://www.abcam.com/abpromise> or contact our technical team.

Terms and conditions

- Guarantee only valid for products bought direct from Abcam or one of our authorized distributors