

Product datasheet

Anti-PRL-1 antibody ab121185

[2 References](#) [2 Images](#)

Overview

| | |
|----------------------------|---|
| Product name | Anti-PRL-1 antibody |
| Description | Rabbit polyclonal to PRL-1 |
| Host species | Rabbit |
| Tested applications | Suitable for: IHC-P, WB |
| Species reactivity | Reacts with: Human |
| Immunogen | Recombinant fragment corresponding to Human PRL-1 aa 23-156. |
| Positive control | Human placenta tissue; Transfected HEK293T cell lysate. |
| General notes | <p>The Life Science industry has been in the grips of a reproducibility crisis for a number of years. Abcam is leading the way in addressing this with our range of recombinant monoclonal antibodies and knockout edited cell lines for gold-standard validation. Please check that this product meets your needs before purchasing.</p> <p>If you have any questions, special requirements or concerns, please send us an inquiry and/or contact our Support team ahead of purchase. Recommended alternatives for this product can be found below, along with publications, customer reviews and Q&As</p> |

Properties

| | |
|-----------------------------|--|
| Form | Liquid |
| Storage instructions | Shipped at 4°C. Upon delivery aliquot and store at -20°C. Avoid freeze / thaw cycles. |
| Storage buffer | <p>pH: 7.20</p> <p>Preservative: 0.02% Sodium azide</p> <p>Constituents: 59% PBS, 40% Glycerol (glycerin, glycerine)</p> |
| Purity | Immunogen affinity purified |
| Clonality | Polyclonal |
| Isotype | IgG |

Applications

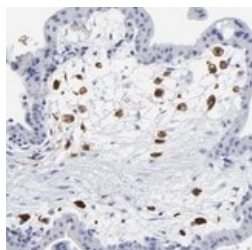
The Abpromise guarantee Our **Abpromise guarantee** covers the use of ab121185 in the following tested applications. The application notes include recommended starting dilutions; optimal dilutions/concentrations should be determined by the end user.

| Application | Abreviews | Notes |
|-------------|-----------|---|
| IHC-P | | 1/200 - 1/500. Perform heat mediated antigen retrieval with citrate buffer pH 6 before commencing with IHC staining protocol. |
| WB | | 1/250 - 1/500. |

Target

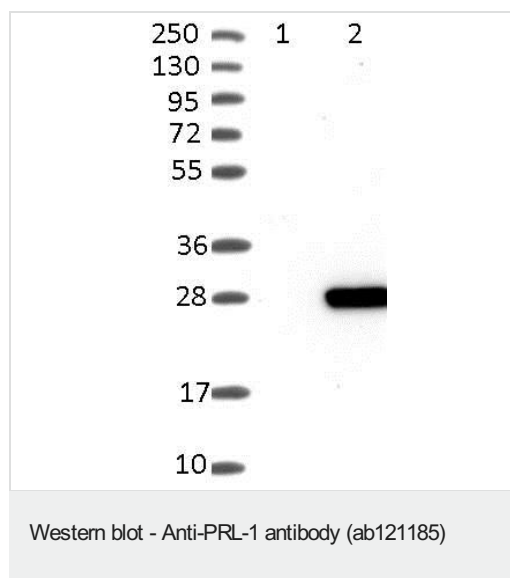
| | |
|---|--|
| Function | Protein tyrosine phosphatase which stimulates progression from G1 into S phase during mitosis. May play a role in the development and maintenance of differentiating epithelial tissues. Enhances cell proliferation, cell motility and invasive activity, and promotes cancer metastasis. |
| Tissue specificity | Expressed in bone marrow, lymph nodes, T lymphocytes, spleen, thymus and tonsil. Overexpressed in tumor cell lines. |
| Sequence similarities | Belongs to the protein-tyrosine phosphatase family. Contains 1 tyrosine-protein phosphatase domain. |
| Developmental stage | Expressed in fetal liver. |
| Post-translational modifications | Farnesylated. Farnesylation is required for membrane targeting. Unfarnesylated forms are shifted into the nucleus. |
| Cellular localization | Cell membrane. Early endosome. Endoplasmic reticulum. Cytoplasm. Cytoplasm > cytoskeleton > spindle. And mitotic spindle. |

Images



ab121185, at 1/75 dilution, staining PRL-1 in paraffin-embedded Human placenta tissue, by Immunohistochemistry.

Immunohistochemistry (Formalin/PFA-fixed paraffin-embedded sections) - Anti-PRL-1 antibody (ab121185)



All lanes : Anti-PRL-1 antibody (ab121185) at 1/250 dilution

Lane 1 : Negative control (vector-only transfected HEK293T lysate)

Lane 2 : PRL-1-transfected HEK293T over-expression Lysate (Co-expressed with a C-terminal myc-DDK tag (~3.1 kDa))

Developed using the ECL technique.

Please note: All products are "FOR RESEARCH USE ONLY. NOT FOR USE IN DIAGNOSTIC PROCEDURES"

Our Abpromise to you: Quality guaranteed and expert technical support

- Replacement or refund for products not performing as stated on the datasheet
- Valid for 12 months from date of delivery
- Response to your inquiry within 24 hours
- We provide support in Chinese, English, French, German, Japanese and Spanish
- Extensive multi-media technical resources to help you
- We investigate all quality concerns to ensure our products perform to the highest standards

If the product does not perform as described on this datasheet, we will offer a refund or replacement. For full details of the Abpromise, please visit <https://www.abcam.com/abpromise> or contact our technical team.

Terms and conditions

- Guarantee only valid for products bought direct from Abcam or one of our authorized distributors