


## Product datasheet

# Anti-Prolactin Receptor/PRL-R antibody [EPR7184(2)] ab170935

Recombinant RabMAb

★★★★★ [1 Abreviews](#) [10 References](#) [5 Images](#)

### Overview

<b>Product name</b>	Anti-Prolactin Receptor/PRL-R antibody [EPR7184(2)]
<b>Description</b>	Rabbit monoclonal [EPR7184(2)] to Prolactin Receptor/PRL-R
<b>Host species</b>	Rabbit
<b>Tested applications</b>	<b>Suitable for:</b> WB, IHC-P, ICC/IF <b>Unsuitable for:</b> Flow Cyt or IP
<b>Species reactivity</b>	<b>Reacts with:</b> Human <b>Predicted to work with:</b> Mouse, Rat 
<b>Immunogen</b>	Synthetic peptide within Human Prolactin Receptor/PRL-R aa 50-150 (Cysteine residue). The exact sequence is proprietary. Database link: <a href="#">P16471</a>
<b>Positive control</b>	T47-D, (B) A431 and (C) Jurkat whole cell lysate ( <a href="#">ab7899</a> ), Human breast carcinoma & kidney tissue, Jurkat cells
<b>General notes</b>	This product is a recombinant monoclonal antibody, which offers several advantages including: <ul style="list-style-type: none"><li>- High batch-to-batch consistency and reproducibility</li><li>- Improved sensitivity and specificity</li><li>- Long-term security of supply</li><li>- Animal-free production</li></ul> For more information <a href="#">see here</a> . Our RabMAb <sup>®</sup> technology is a patented hybridoma-based technology for making rabbit monoclonal antibodies. For details on our patents, please refer to <a href="#">RabMAb<sup>®</sup> patents</a> .

### Properties

<b>Form</b>	Liquid
<b>Storage instructions</b>	Shipped at 4°C. Store at +4°C short term (1-2 weeks). Upon delivery aliquot. Store at -20°C long term. Avoid freeze / thaw cycle.
<b>Storage buffer</b>	pH: 7.2 Preservative: 0.01% Sodium azide Constituents: 59% PBS, 40% Glycerol (glycerin, glycerine), 0.5% BSA

<b>Purity</b>	Protein A purified
<b>Clonality</b>	Monoclonal
<b>Clone number</b>	EPR7184(2)
<b>Isotype</b>	IgG

## Applications

**The Abpromise guarantee** Our **Abpromise guarantee** covers the use of ab170935 in the following tested applications. The application notes include recommended starting dilutions; optimal dilutions/concentrations should be determined by the end user.

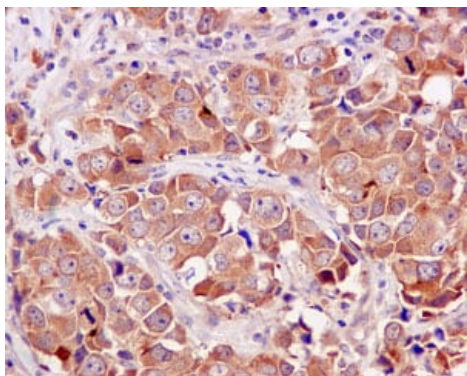
Application	Abreviews	Notes
WB		1/1000 - 1/5000. Predicted molecular weight: 70 kDa.
IHC-P	★★★★★ (1)	1/50 - 1/100. Perform heat mediated antigen retrieval with citrate buffer pH 6 before commencing with IHC staining protocol. ab170935 shows background nuclear staining on mouse colon,pancreas and lung.
ICC/IF		1/100 - 1/250.

**Application notes** Is unsuitable for Flow Cyt or IP.

## Target

<b>Function</b>	This is a receptor for the anterior pituitary hormone prolactin (PRL). Isoform 4 is unable to transduce prolactin signaling. Isoform 6 is unable to transduce prolactin signaling.
<b>Tissue specificity</b>	Expressed in breast, placenta, kidney, liver and pancreas.
<b>Sequence similarities</b>	Belongs to the type I cytokine receptor family. Type 1 subfamily. Contains 2 fibronectin type-III domains.
<b>Domain</b>	The WSXWS motif appears to be necessary for proper protein folding and thereby efficient intracellular transport and cell-surface receptor binding. The box 1 motif is required for JAK interaction and/or activation.
<b>Cellular localization</b>	Secreted and Membrane.

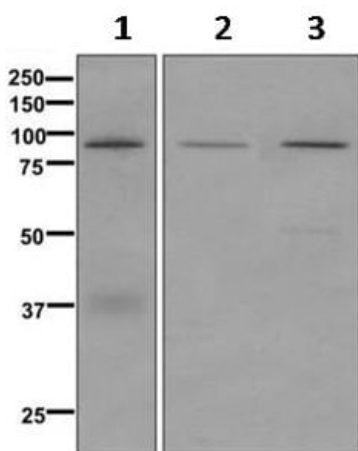
## Images



Immunohistochemistry (Formalin/PFA-fixed paraffin-embedded sections) - Anti-Prolactin Receptor/PRL-R antibody [EPR7184(2)] (ab170935)

Immunohistochemical analysis of paraffin-embedded human breast carcinoma tissue labeling Prolactin Receptor / PRL-R with ab170935 at 1/50 dilution.

Perform heat mediated antigen retrieval with citrate buffer pH 6 before commencing with IHC staining protocol.



Western blot - Anti-Prolactin Receptor/PRL-R antibody [EPR7184(2)] (ab170935)

**All lanes** : Anti-Prolactin Receptor/PRL-R antibody [EPR7184(2)] (ab170935) at 1/1000 dilution

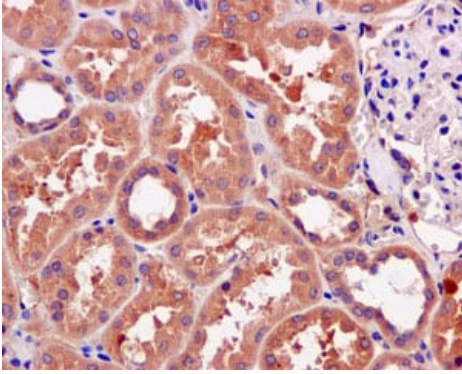
**Lane 1** : T47-D cell lysates

**Lane 2** : A431 cell lysates

**Lane 3** : Jurkat cell lysates

Lysates/proteins at 10  $\mu$ g per lane.

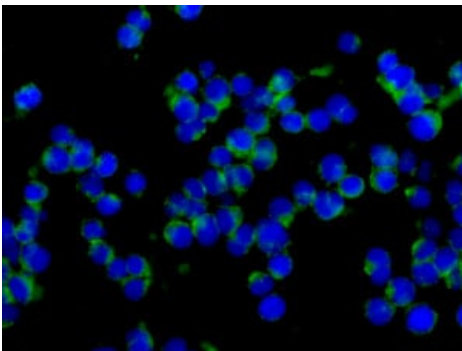
**Predicted band size:** 70 kDa



Immunohistochemistry (Formalin/PFA-fixed paraffin-embedded sections) - Anti-Prolactin Receptor/PRL-R antibody [EPR7184(2)] (ab170935)

Immunohistochemical analysis of paraffin-embedded human kidney tissue labeling Prolactin Receptor / PRL-R with ab170935 at 1/50 dilution.





Perform heat mediated antigen retrieval with citrate buffer pH 6 before commencing with IHC staining protocol.



Immunocytochemistry/ Immunofluorescence - Anti-Prolactin Receptor/PRL-R antibody [EPR7184(2)] (ab170935)

Immunofluorescence analysis of Jurkat cells labeling Prolactin Receptor / PRL-R with ab170935 at 1/100 dilution.

Why choose a recombinant antibody?

 <p><b>Research with confidence</b> Consistent and reproducible results</p>	 <p><b>Long-term and scalable supply</b> Recombinant technology</p>
 <p><b>Success from the first experiment</b> Confirmed specificity</p>	 <p><b>Ethical standards compliant</b> Animal-free production</p>

Anti-Prolactin Receptor/PRL-R antibody  
[EPR7184(2)] (ab170935)

**Please note:** All products are "FOR RESEARCH USE ONLY. NOT FOR USE IN DIAGNOSTIC PROCEDURES"

### Our Abpromise to you: Quality guaranteed and expert technical support

---

- Replacement or refund for products not performing as stated on the datasheet
- Valid for 12 months from date of delivery
- Response to your inquiry within 24 hours
- We provide support in Chinese, English, French, German, Japanese and Spanish
- Extensive multi-media technical resources to help you
- We investigate all quality concerns to ensure our products perform to the highest standards

If the product does not perform as described on this datasheet, we will offer a refund or replacement. For full details of the Abpromise, please visit <https://www.abcam.com/abpromise> or contact our technical team.

### Terms and conditions

---

- Guarantee only valid for products bought direct from Abcam or one of our authorized distributors