

### Anti-Prolactin/PRL antibody ab103617

3 Images

#### Overview

<b>Product name</b>	Anti-Prolactin/PRL antibody
<b>Description</b>	Rabbit polyclonal to Prolactin/PRL
<b>Host species</b>	Rabbit
<b>Tested applications</b>	<b>Suitable for:</b> WB
<b>Species reactivity</b>	<b>Reacts with:</b> Mouse, Human
<b>Immunogen</b>	Recombinant full length protein within Human Prolactin/PRL aa 1-250. The exact immunogen sequence used to generate this antibody is proprietary information. If additional detail on the immunogen is needed to determine the suitability of the antibody for your needs, please <a href="#">contact</a> our Scientific Support team to discuss your requirements.
<b>Positive control</b>	Mouse testis tissue lysate, Prolactin/PRL transfected 293T cell line lysate.
<b>General notes</b>	<p>The Life Science industry has been in the grips of a reproducibility crisis for a number of years. Abcam is leading the way in addressing this with our range of recombinant monoclonal antibodies and knockout edited cell lines for gold-standard validation. Please check that this product meets your needs before purchasing.</p> <p>If you have any questions, special requirements or concerns, please send us an inquiry and/or contact our Support team ahead of purchase. Recommended alternatives for this product can be found below, along with publications, customer reviews and Q&amp;As</p>

#### Properties

<b>Form</b>	Liquid
<b>Storage instructions</b>	Shipped at 4°C. Upon delivery aliquot. Store at -20°C or -80°C. Avoid freeze / thaw cycle.
<b>Storage buffer</b>	pH: 7.40 Constituent: 100% PBS
<b>Purity</b>	Protein A purified
<b>Clonality</b>	Polyclonal
<b>Isotype</b>	IgG

#### Applications

## The Abpromise guarantee

Our **Abpromise guarantee** covers the use of ab103617 in the following tested applications.

The application notes include recommended starting dilutions; optimal dilutions/concentrations should be determined by the end user.

Application	Abreviews	Notes
WB		1/500 - 1/1000. Predicted molecular weight: 26 kDa.

## Target

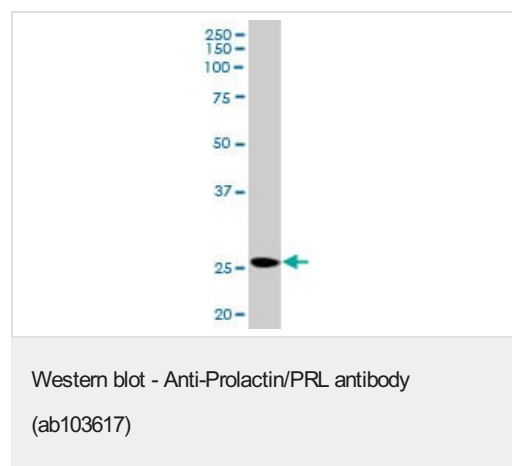
### Relevance

Various hormones are secreted from the anterior pituitary during development and growth. Prolactin is a growth factor secreted by the anterior pituitary that is necessary for the proliferation and differentiation of the mammary glands.

### Cellular localization

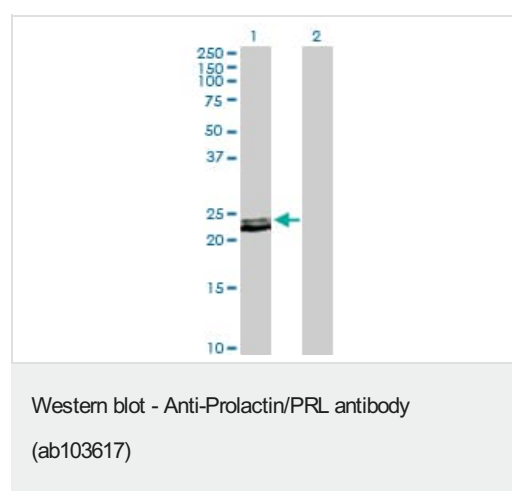
Secreted

## Images



Anti-Prolactin/PRL antibody (ab103617) at 1/500 dilution + Mouse testis tissue lysate at 50 µg

**Predicted band size:** 26 kDa



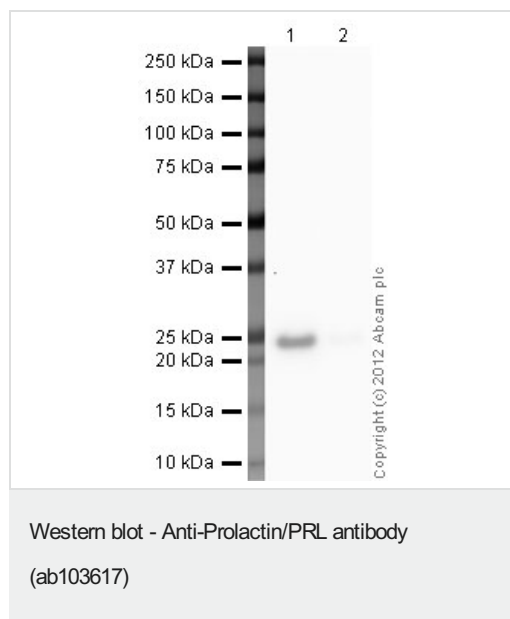
**All lanes :** Anti-Prolactin/PRL antibody (ab103617) at 1/500 dilution

**Lane 1 :** Prolactin/PRL transfected 293T cell lysate

**Lane 2 :** Non-transfected 293T cell lysate

Lysates/proteins at 25 µg per lane.

**Predicted band size:** 26 kDa



Anti-Prolactin/PRL antibody (ab103617) at 1/500 dilution +  
Recombinant human Prolactin/PRL protein (**ab51703**) at 0.1 µg

### Secondary

Goat Anti-Rabbit IgG H&L (HRP) preadsorbed (**ab97080**) at  
1/5000 dilution

Developed using the ECL technique.

Performed under reducing conditions.

**Predicted band size:** 26 kDa

**Exposure time:** 90 seconds

**Please note:** All products are "FOR RESEARCH USE ONLY. NOT FOR USE IN DIAGNOSTIC PROCEDURES"

### Our Abpromise to you: Quality guaranteed and expert technical support

- Replacement or refund for products not performing as stated on the datasheet
- Valid for 12 months from date of delivery
- Response to your inquiry within 24 hours
- We provide support in Chinese, English, French, German, Japanese and Spanish
- Extensive multi-media technical resources to help you
- We investigate all quality concerns to ensure our products perform to the highest standards

If the product does not perform as described on this datasheet, we will offer a refund or replacement. For full details of the Abpromise, please visit <https://www.abcam.com/abpromise> or contact our technical team.

### Terms and conditions

- Guarantee only valid for products bought direct from Abcam or one of our authorized distributors